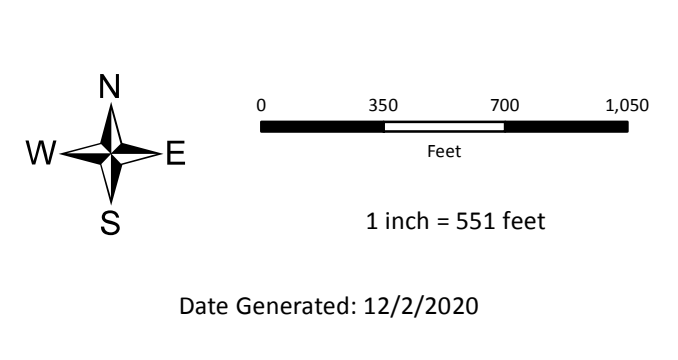


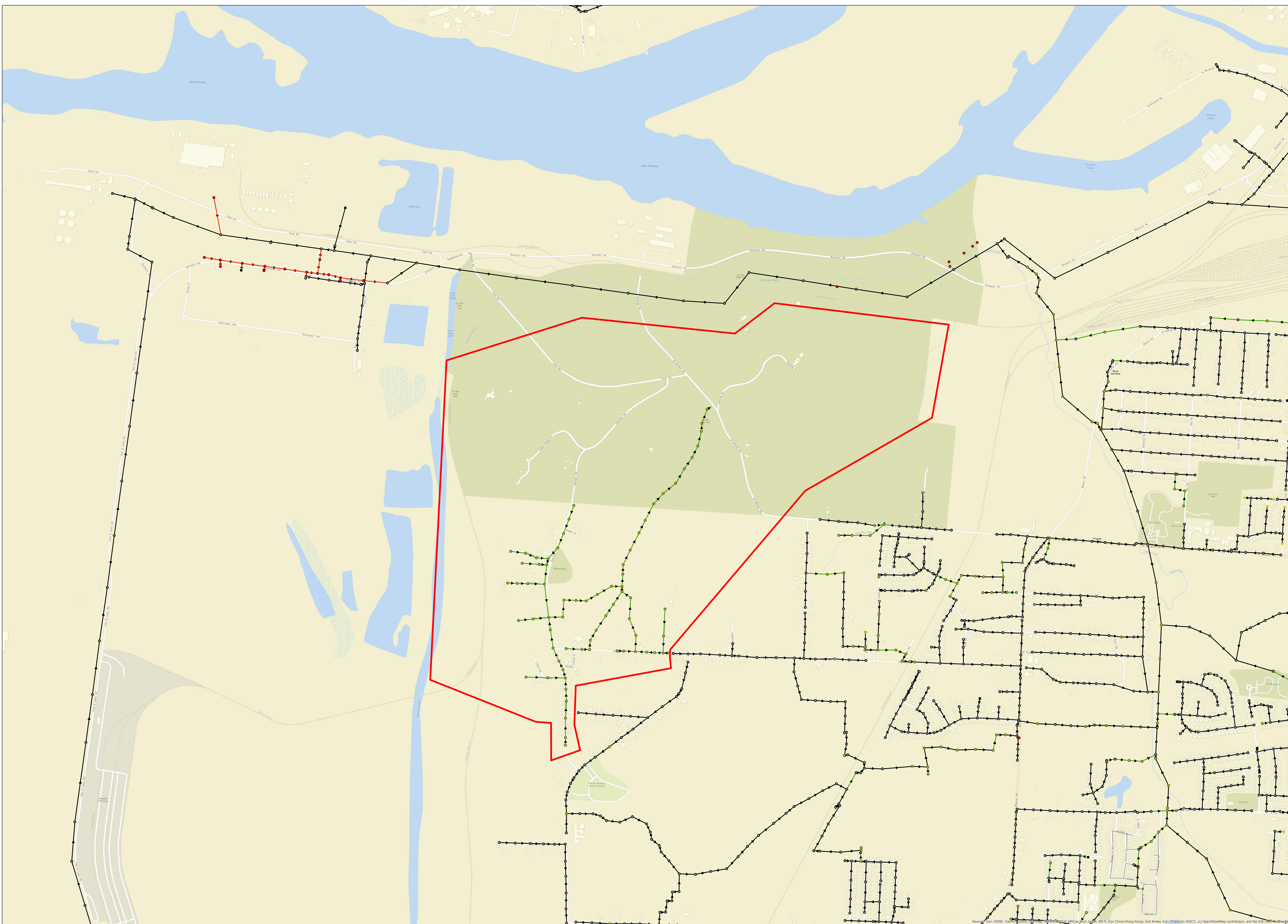
- Manhole (Abandoned)
- Manhole Private (Do Not Complete)
- Dead End
- Cleanout
- Do Not Complete
- Digitized
- Gravity Main (Abandoned)
- Gravity Main Private (Do Not Complete)
- Do Not Complete
- Digitized
- NS04
- NS03



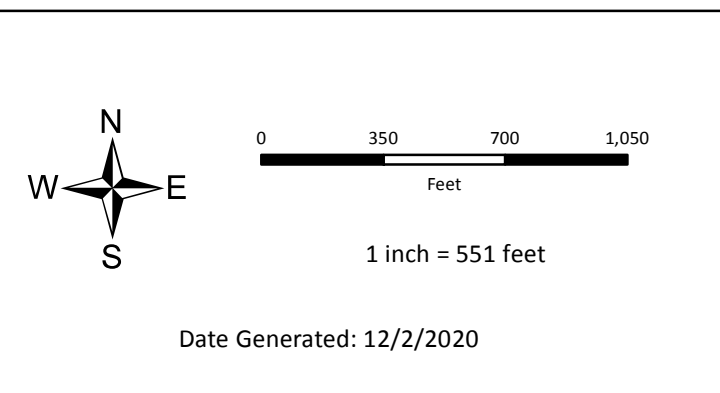
**Nonconnah South Tributaries: North Whitehaven
NS03 & NS04 Basins**



Sources: Esri, HERE, Garmin, USGS, Intermap, INCREMENT P, NRCan, Esri Japan, METI, Esri China (Hong Kong), Esri Korea, Esri (Thailand), NGCC, (c) OpenStreetMap contributors, and the GIS User Community



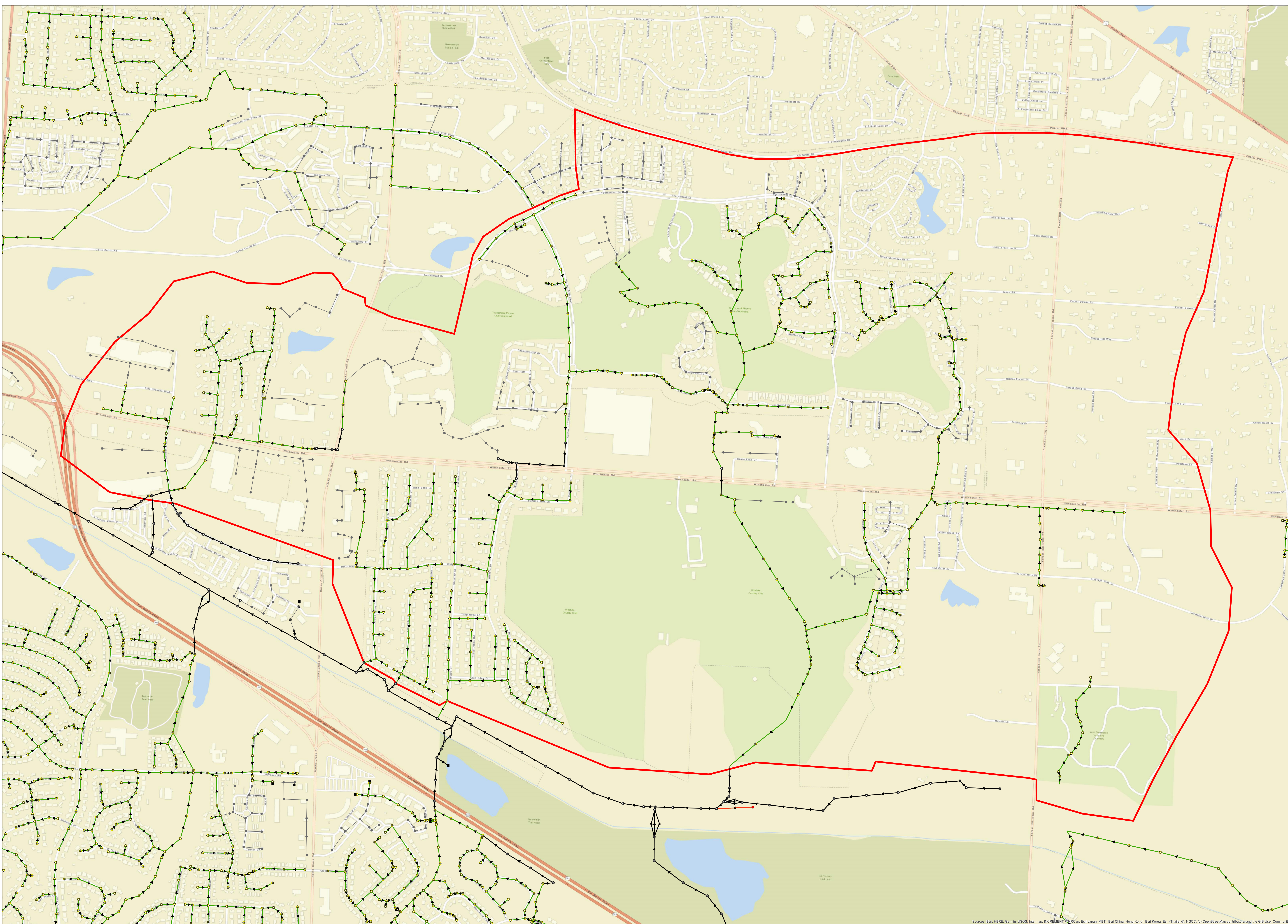
- Manhole (Abandoned)
- Manhole Private (Do Not Complete)
- Dead End
- Cleanout
- Do Not Complete
- Digitized
- Gravity Main (Abandoned)
- Gravity Main Private (Do Not Complete)
- Do Not Complete
- Digitized
- NS01



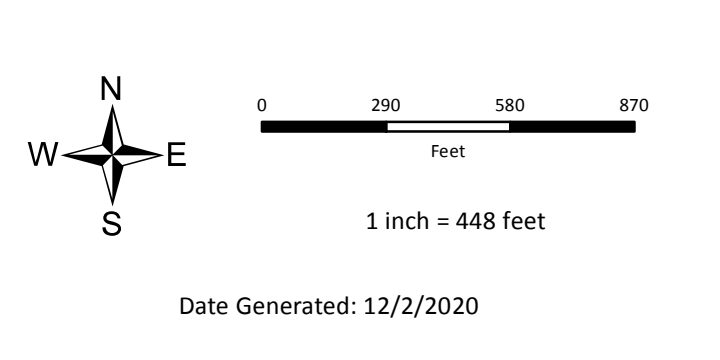
**Nonconnah South Tributaries: North Whitehaven
NS01 Basin**

BLACK & VEATCH
Building a world of difference.

Disclaimer: Pilot boundary, facility graphics, pipe diameters, and quantities shown on this map are approximate and may not match actual field conditions. Variations to this are to be expected.



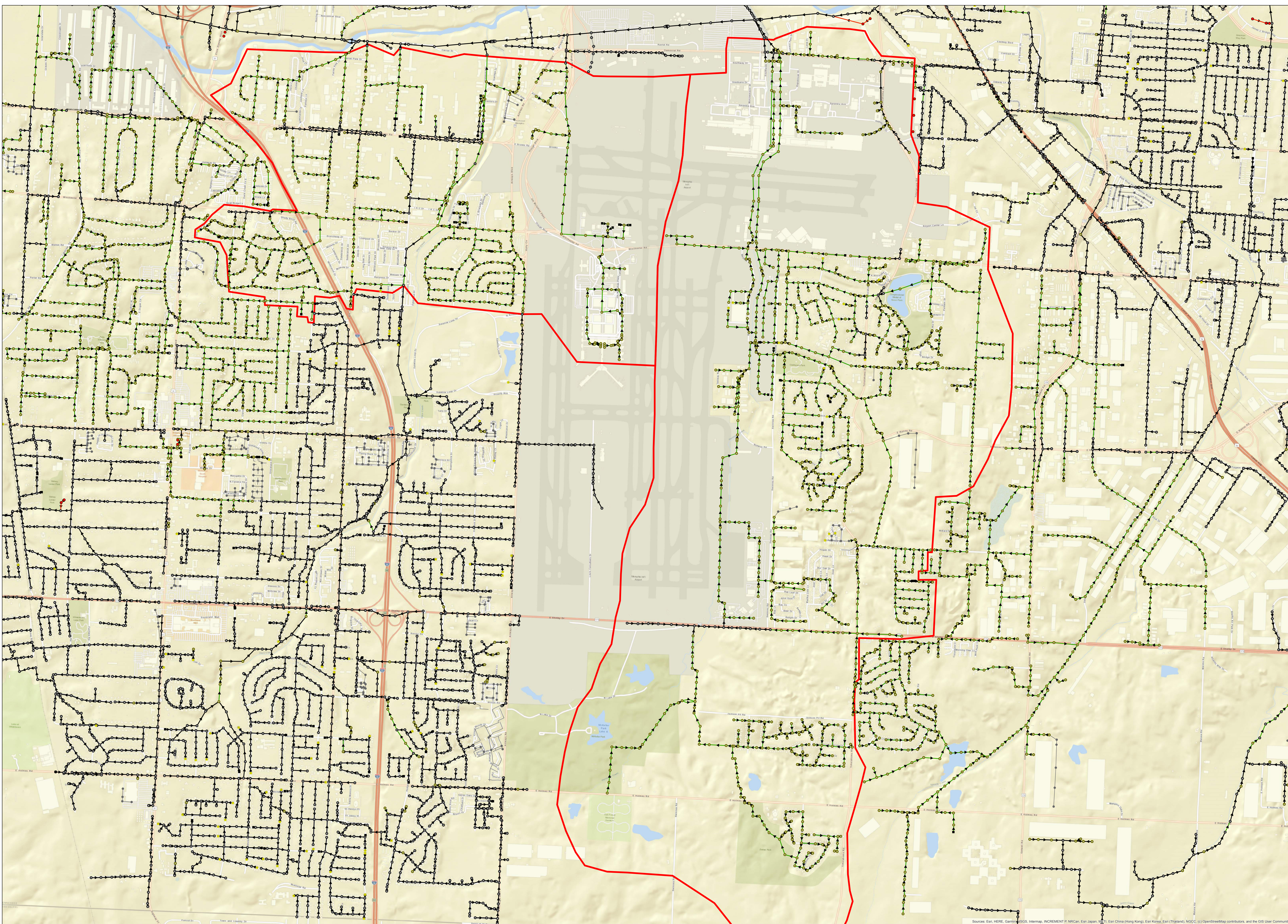
- Manhole (Abandoned)
- Manhole Private (Do Not Complete)
- Dead End
- Cleanout
- Do Not Complete
- Digitized
- Gravity Main (Abandoned)
- Gravity Main Private (Do Not Complete)
- Do Not Complete
- Digitized
- NN09



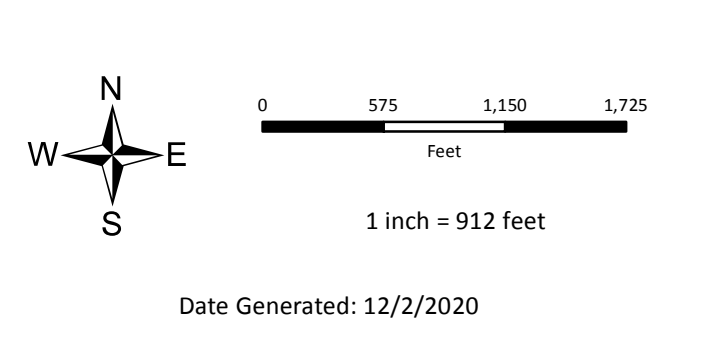
**Nonconnah South Tributaries: Tenmile Creek- Southwind
NN09 Basin**



Sources: Esri, HERE, Garmin, USGS, Intermap, INCREMENT P, CAN, Esri Japan, METI, Esri China (Hong Kong), Esri Korea, Esri (Thailand), NGCC, (c) OpenStreetMap contributors, and the GIS User Community



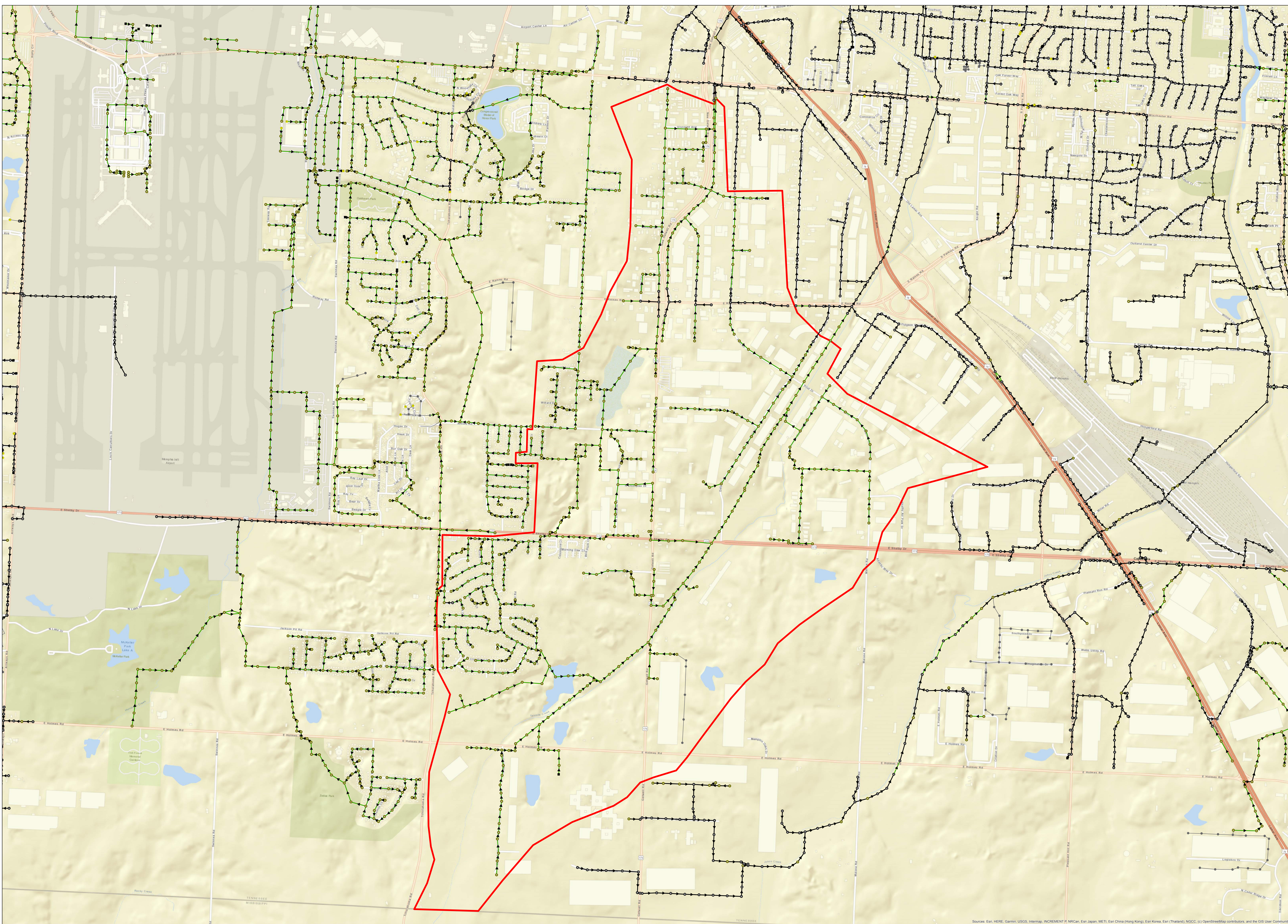
- Manhole (Abandoned)
- Manhole Private (Do Not Complete)
- Dead End
- Cleanout
- Do Not Complete
- Digitized
- Gravity Main (Abandoned)
- Gravity Main Private (Do Not Complete)
- Do Not Complete
- Digitized
- NS06
- NS05_1



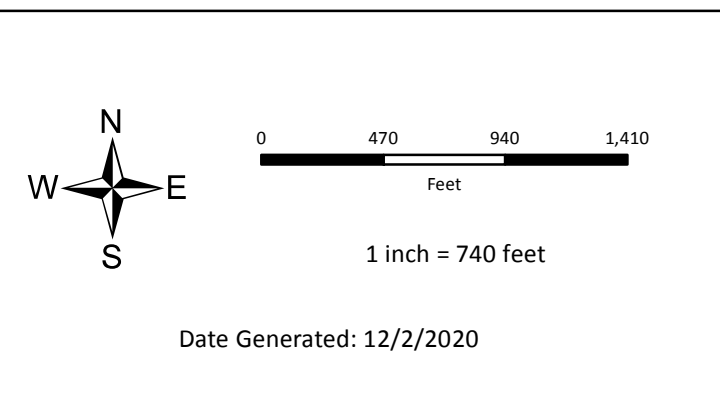
**Nonconah South Tributaries: Hurricane Creek
NS05-1 & NS06 Basins**



Sources: Esri, HERE, Garmin, Swisstopo, Mapbox, OpenStreetMap contributors, and the GIS User Community



- Manhole (Abandoned)
- Manhole Private (Do Not Complete)
- Dead End
- Cleanout
- Do Not Complete
- Digitized
- Gravity Main (Abandoned)
- Gravity Main Private (Do Not Complete)
- Do Not Complete
- Digitized
- NS07_2

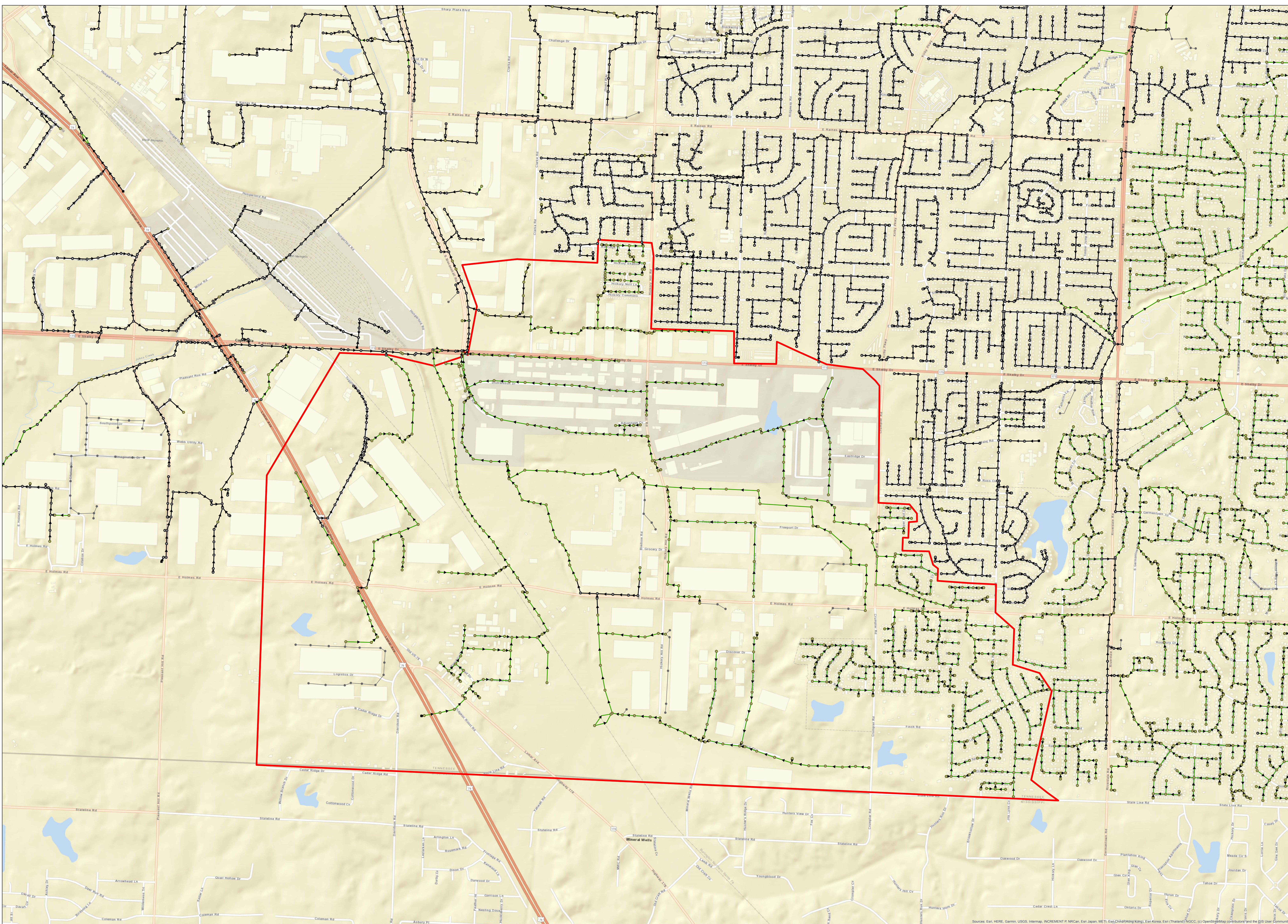


**Nonconah South Tributaries: Tenmile Creek- Southwind
NS07-2 Basin**

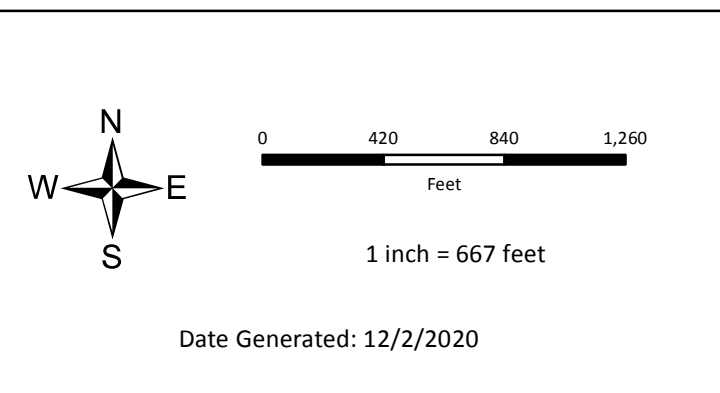
Sources: Esri, HERE, Garmin, USGS, Intermap, INCREMENT P, NRCan, Esri Japan, METI, Esri China (Hong Kong), Esri Korea, Esri (Thailand), NGCC, (c) OpenStreetMap contributors, and the GIS User Community



Disclaimer: Pilot boundary, facility graphics, pipe diameters, and quantities shown on this map are approximate and may not match actual field conditions. Variations to this are to be expected.



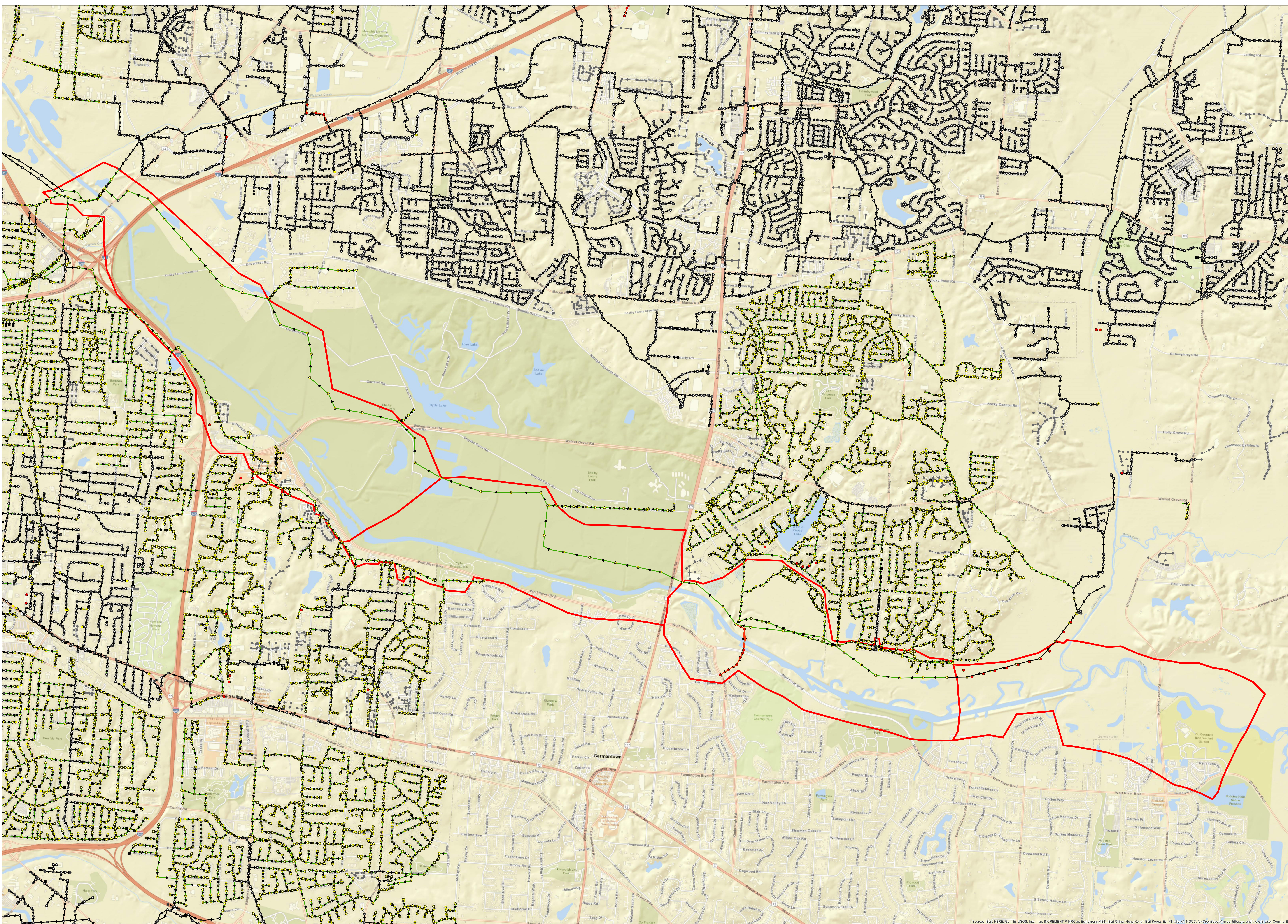
- Manhole (Abandoned)
- Manhole Private (Do Not Complete)
- Dead End
- Cleanout
- Do Not Complete
- Digitized
- Gravity Main (Abandoned)
- Gravity Main Private (Do Not Complete)
- Do Not Complete
- Digitized
- NS09_3



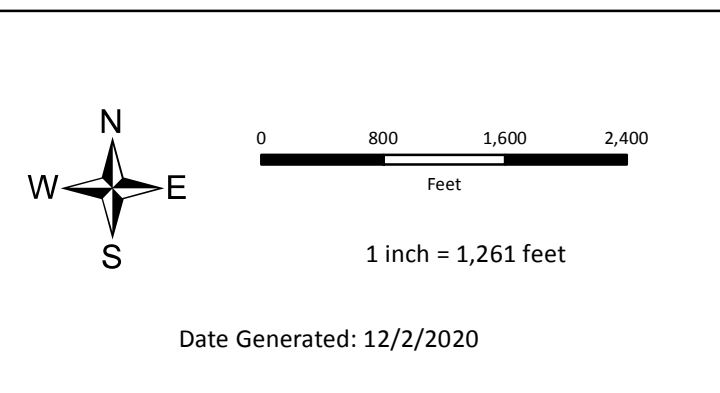
**Nonconnah South Tributaries: Tenmile Creek- Southwind
NS09-3 Basin**



Disclaimer: Pilot boundary, facility graphics, pipe diameters, and quantities shown on this map are approximate and may not match actual field conditions. Variations to this are to be expected.



- Manhole (Abandoned)
- Manhole Private (Do Not Complete)
- Dead End
- Cleanout
- Do Not Complete
- Digitized
- Gravity Main (Abandoned)
- Gravity Main Private (Do Not Complete)
- Do Not Complete
- Digitized
- WO05 - WO08



**Wolf River Interceptor
WO05, WO06, WO07, WO08**



Disclaimer: Pilot boundary, facility graphics, pipe diameters, and quantities shown on this map are approximate and may not match actual field conditions. Variations to this are to be expected.