

CITY OF MEMPHIS, TENNESSEE SEWER ASSESSMENT & REHABILITATION PROGRAM

OLD LOOSAHATCHIE HIGHWAY 51 EMERGENCY SEWER LINE REPLACEMENT

JUNE 2015

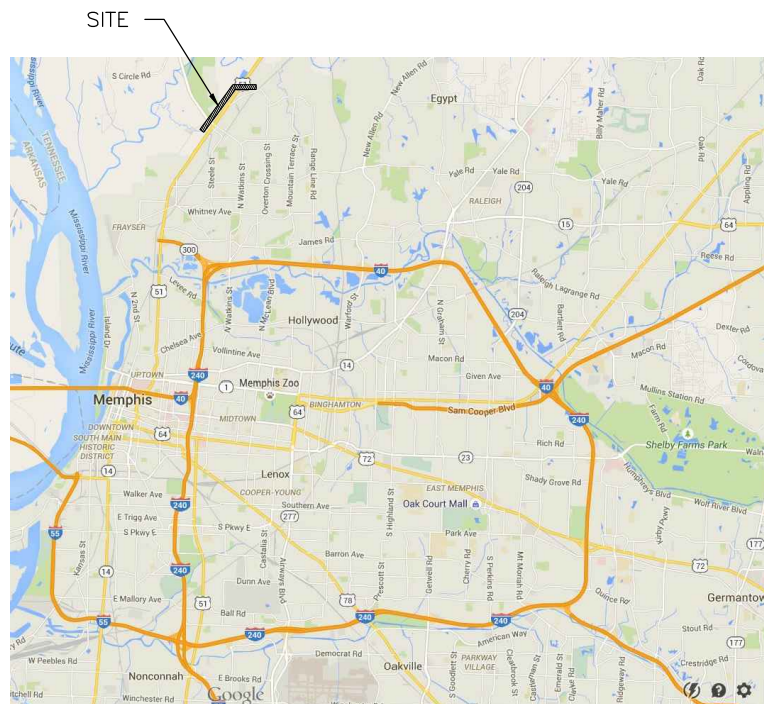
CONSTRUCTION DRAWINGS

INDEX OF SHEETS

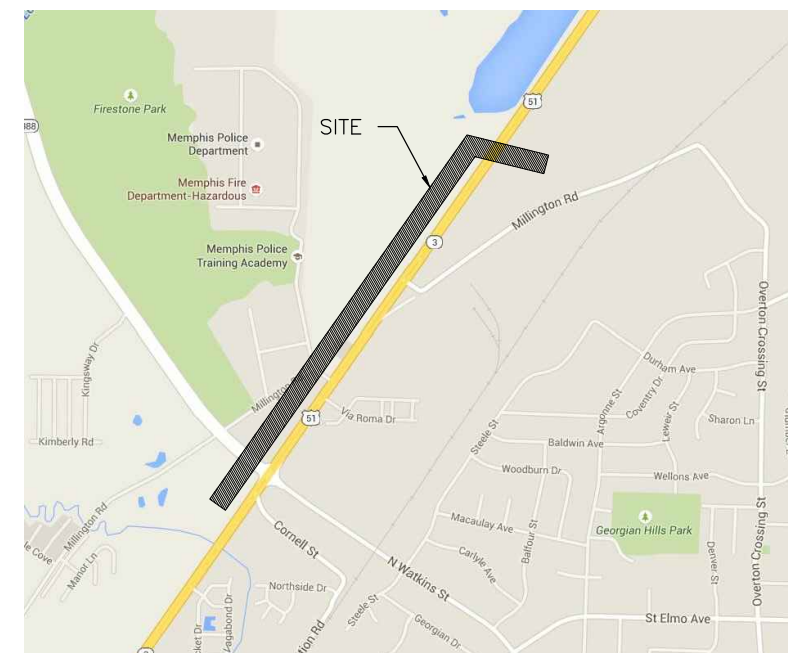
- C0.0 COVER
- C0.1 GENERAL NOTES
- C1.1 EXISTING CONDITIONS PLAN & PROFILE STA 0+00 – 20+00
- C1.2 EXISTING CONDITIONS PLAN & PROFILE STA 20+00 – 40+00
- C1.3 EXISTING CONDITIONS PLAN & PROFILE STA 40+00 – 60+00
- C1.4 EXISTING CONDITIONS PLAN & PROFILE STA 60+00 – 75+52.55
- C1.5 IMPROVED CONDITIONS PLAN & PROFILE STA 0+00 – 20+00
- C1.6 IMPROVED CONDITIONS PLAN & PROFILE STA 20+00 – 40+00
- C1.7 IMPROVED CONDITIONS PLAN & PROFILE STA 40+00 – 60+00
- C1.8 IMPROVED CONDITIONS PLAN & PROFILE STA 60+00 – 75+53.73



Black & Veatch Corporation
SARP10 PROGRAM OFFICE
MEMPHIS, TENNESSEE 38111
3485 POPLAR AVENUE, SUITE 230



VICINITY MAP
NOT TO SCALE



LOCATION MAP
NOT TO SCALE

6/5/2015	ADDENDUM 2	REVISIONS AND RECORD OF ISSUE	1	JLA	APP
COVER: DWG	DATE	NO.	BY	CHK	APP
SAVED: 6/15/2015 2:22 PM (vbrntj)	USER:	REF1:			
PLOTTED: 6/15/2015 2:47 PM		REF2:			
		REF3:			
		REF4:			



SARP10
OLD LOOSAHATCHIE HIGHWAY 51
EMERGENCY SEWER LINE REPLACEMENT

DESIGNED: JLA
DETAILED: JLA
CHECKED: BJD
APPROVED: BJD
DATE: 6/5/2015

PROJECT NO.

C0.0
SHEET
1 OF 10

GENERAL NOTES:

LOCATION OF EXISTING UNDERGROUND UTILITIES ARE APPROXIMATE AND NOT NECESSARILY ALL OF SAME. THE CONTRACTOR SHALL BE RESPONSIBLE FOR CONTACTING THE APPROPRIATE UTILITY COMPANY TO DETERMINE THE EXACT LOCATION OF ALL UTILITIES AND/OR UNDERGROUND STRUCTURES PRIOR TO THE INITIATION OF ANY CONSTRUCTION. CONTRACTOR SHALL ASSUME FULL RESPONSIBILITY FOR DAMAGE TO ANY UTILITIES ENCOUNTERED WITHIN CONSTRUCTION PERIMETERS. FOR SITE LOCATION OF EXISTING UTILITIES INVOLVING MLG&W, SOUTH CENTRAL BELL, AND/OR TEXAS GAS COMPANY, PLEASE CALL 1-800-351-1111. FOR SEWER SERVICE LOCATIONS, CALL 901-529-8025.

CONTRACTOR SHALL COORDINATE WITH THE EXISTING BYPASS PUMPING CONTRACTOR TO ENSURE THAT SANITARY SEWER OVERFLOWS DO NOT OCCUE DURING THE CONSTRUCTION CONTRACT.

CONTRACTOR SHALL MAINTAIN ACCESS TO ALL PROPERTIES

ALL AREAS IN CUT OR FILL WHERE VEGETATION HAS BEEN REMOVED SHALL BE SEEDED & MULCHED AS REQUIRED TO PREVENT EROSION.

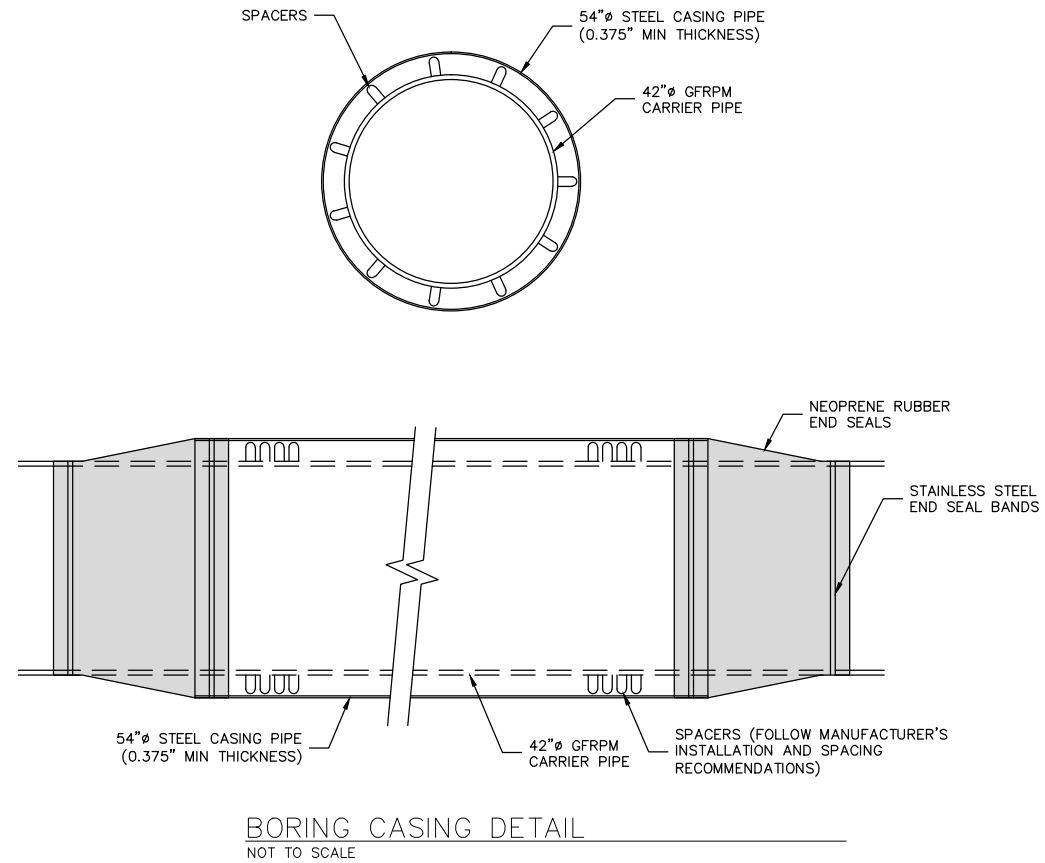
THE CONTRACTOR SHALL VERIFY EXISTING DATA AND REPORT ANY SIGNIFICANT DISCREPANCIES TO THE ENGINEER.

THE CONTRACTOR SHALL PROVED ADEQUATE AND EFFECTIVE EROSION CONTROL TO MEET ALL FEDERAL AND STATE REGULATIONS AS NECESSARY TO PREVENT ANY SILTATION INTO THE EXISTING DRAINAGE SYSTEM OR ADJACENT PROPERTIES.

THE CONTRACTOR IS RESPONSIBLE FOR ACQUIRING THE NECESSARY PERMITS TO COMPLETE THE WORK PRIOR TO BEGINNING CONSTRUCTION.

GEOTECHNICAL REPORTS FOR OTHER PROJECTS IN THIS AREA INDICATE GROUNDWATER COULD BE ENCOUNTERED AT DEPTHS OF APPROXIMATELY 10'. THE CONTRACTOR SHALL BE RESPONSIBLE FOR DEWATERING AS NEEDED TO PROPERLY AND SAFELY COMPLETE THE WORK.

THE CONTRACTOR SHALL BE RESPONSIBLE FOR THE DISPOSAL OF ALL ITEMS REMOVED AS PART OF THIS PROJECT



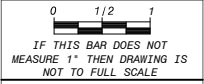
6/6/2015	ADDENDUM 2	REVISIONS AND RECORD OF ISSUE
DATE		
COVER: DWG		USER:
SAVED: 6/15/2015 2:22 PM (vbrntj)		BWG: VER:
PLOTTED: 6/15/2015 2:47 PM		



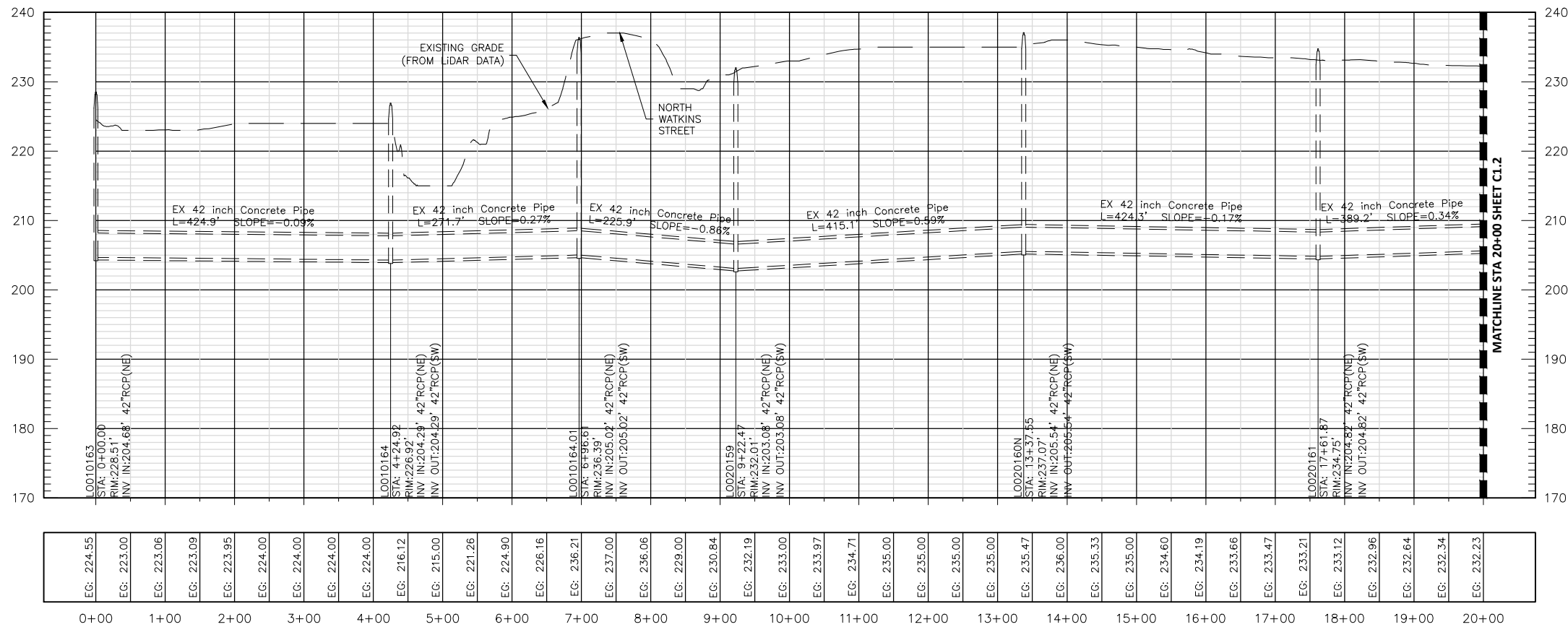
BLACK & VEATCH
 SARP10 PROGRAM OFFICE
 3486 POPLAR AVENUE, SUITE 230
 MEMPHIS, TENNESSEE 38111

SARP10
OLD LOOSAHATCHIE HIGHWAY 51
EMERGENCY SEWER LINE REPLACEMENT
GENERAL NOTES

DESIGNED:	JLA
DETAILED:	JLA
CHECKED:	BJD
APPROVED:	BJD
DATE:	6/5/2015



PROJECT NO.
CO. 1
 SHEET
 2 OF 10



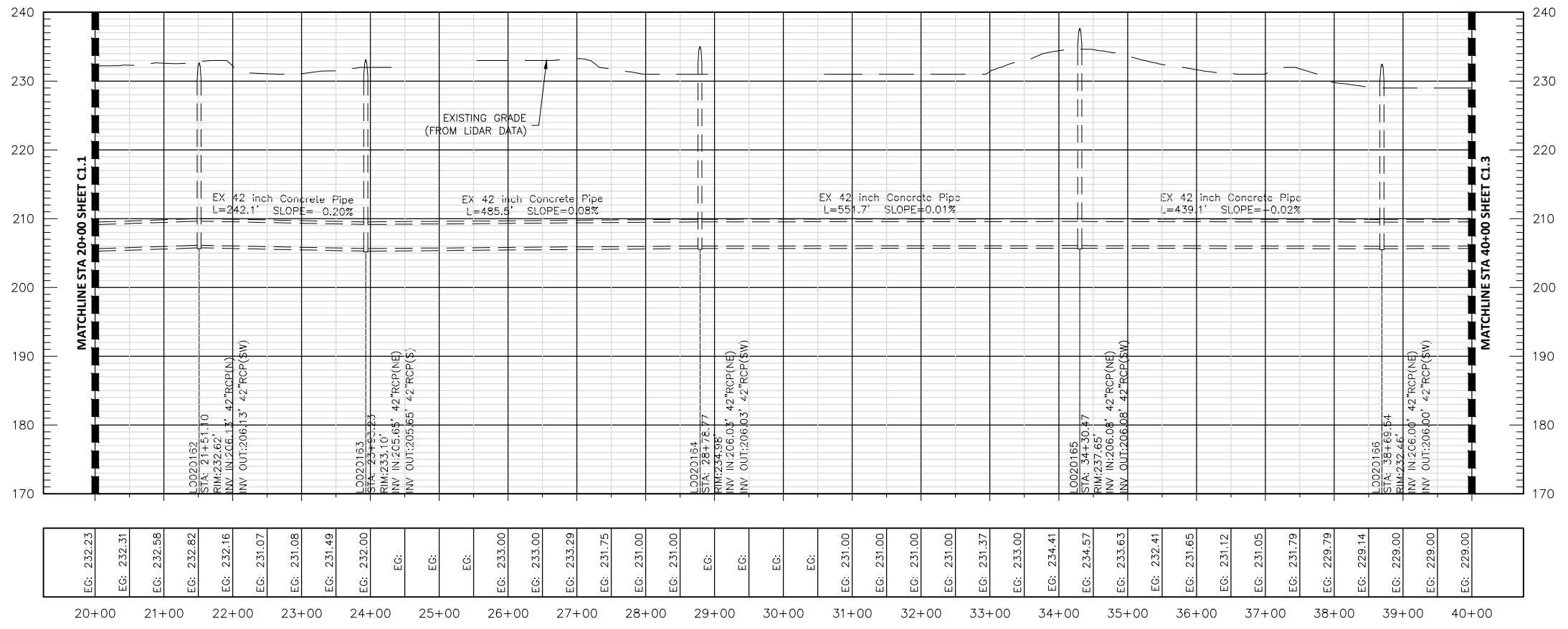
DATE	6/5/2015	ADDENDUM	2	REVISIONS AND RECORD OF ISSUE	
DESIGNED	JLA	DRAWN	JLA	DATE	6/5/2015
Detailed	JLA	Checked	BJD	APPROVED	BJD
DATE	6/5/2015	PROJECT NO.			
C1.1 SHEET 3 OF 10					

BLACK & VEATCH
CONSULTING ENGINEERS

SARP 10
SEWER ASSESSMENT & REHABILITATION PROGRAM

J. JUSTIN LEE AVEY
REGISTERED ENGINEER
MEMBER
NO. 0042052
STATE OF TENNESSEE

SARP10 PROGRAM OFFICE
3486 POPLAR AVENUE, SUITE 230
MEMPHIS, TENNESSEE 38111



EG: 232.23	EG: 232.31	EG: 232.58	EG: 232.82	EG: 232.16	EG: 231.07	EG: 231.08	EG: 231.49	EG: 232.00	EG:	EG:	EG:	EG:	EG: 233.00	EG: 233.00	EG: 233.29	EG: 231.75	EG: 231.00	EG: 231.00	EG:	EG:	EG:	EG:	EG: 231.00	EG: 231.00	EG: 231.00	EG: 231.00	EG: 231.37	EG: 233.00	EG: 234.41	EG: 234.57	EG: 233.63	EG: 232.41	EG: 231.65	EG: 231.12	EG: 231.05	EG: 231.79	EG: 229.79	EG: 229.14	EG: 229.00	EG: 229.00	EG: 229.00			
20+00	21+00	22+00	23+00	24+00	25+00	26+00	27+00	28+00	29+00	30+00	31+00	32+00	33+00	34+00	35+00	36+00	37+00	38+00	39+00	40+00																								

NOTE:
ALL PIPES AND STRUCTURES BETWEEN L0010163 AND L0020173 TO BE REMOVED AND REPLACED PER SHEETS C1.5 - C1.8. L0010163 AND L0020173 TO REMAIN.

DATE	6/5/2015	ADDENDUM	2	REVISIONS AND RECORD OF ISSUE	
NO.	1	DATE	6/5/2015	BY	JLA
USER:	OLD LOOS P & P L0010163 - L0020173 EX.dwg	REF1:			
	SAVED: 6/15/2015 2:02 PM (BENTLEY)	REF2:			
	PLOTTED: 6/15/2015 2:48 PM	REF3:			
		REF4:			



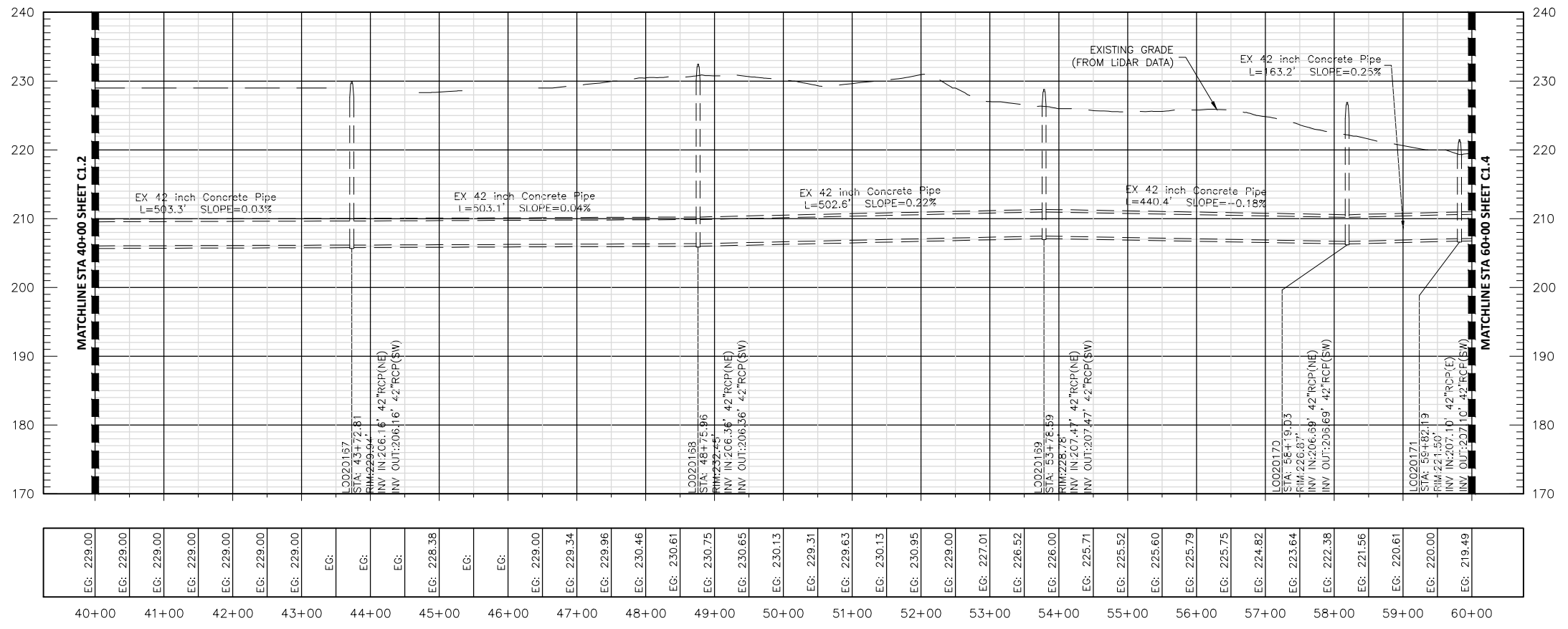
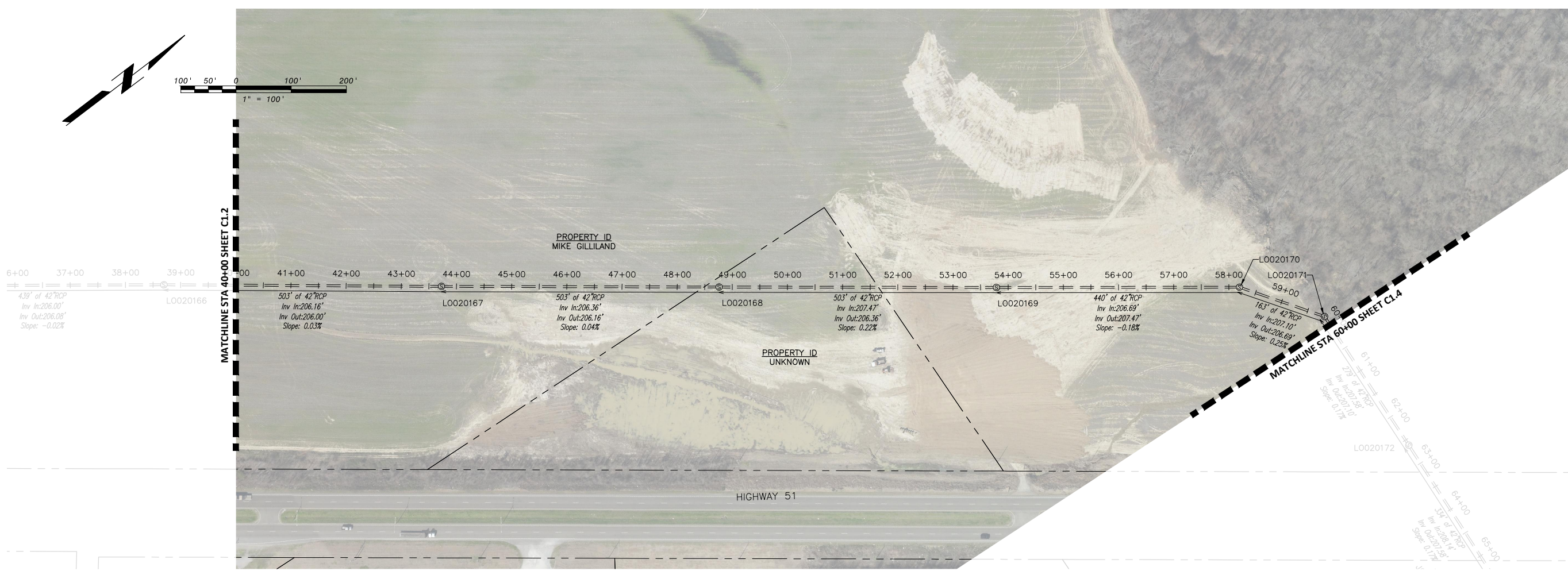
BLACK & VEATCH
SARP10 PROGRAM OFFICE
3486 POPLAR AVENUE, SUITE 230
MEMPHIS, TENNESSEE 38111

**SARP10
OLD LOOSAHATCHIE HIGHWAY 51
EMERGENCY SEWER LINE REPLACEMENT**

EXISTING CONDITIONS
PLAN & PROFILE
STA 20+00 - 40+00

DESIGNED:	JLA
DETAILED:	JLA
CHECKED:	BJD
APPROVED:	BJD
DATE:	6/5/2015

PROJECT NO.



NOTE:
ALL PIPES AND STRUCTURES BETWEEN L0010163 AND L0020173 TO BE REMOVED AND REPLACED PER SHEETS C1.5 - C1.8, L0010163 AND L0020173 TO REMAIN.

DATE	6/5/2015	ADDENDUM	2	REVISIONS AND RECORD OF ISSUE	NO.	BY	CHK	APP
DATE	6/5/2015	ADDENDUM	1	REVISIONS AND RECORD OF ISSUE	NO.	BY	CHK	APP

DESIGNED: JLA
 DETAILED: JLA
 CHECKED: BJD
 APPROVED: BJD
 DATE: 6/5/2015

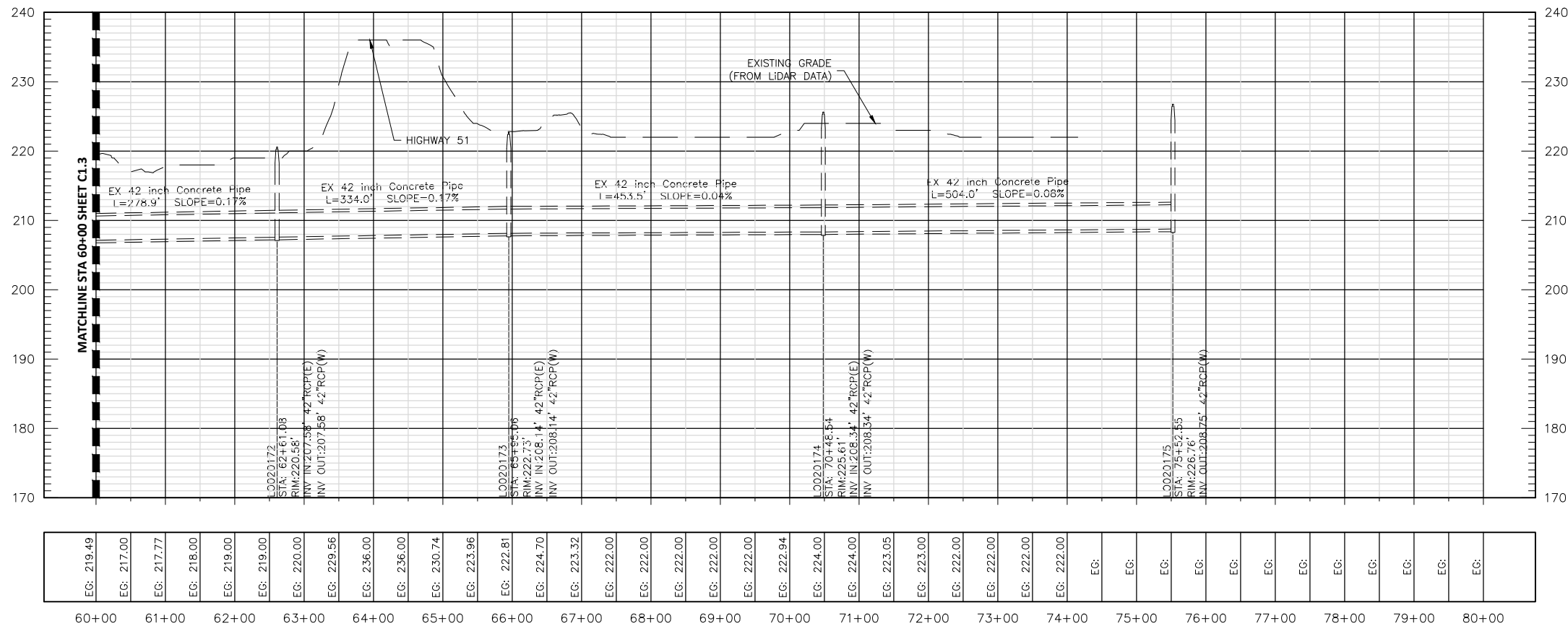
PROJECT NO. **C1.3**
 SHEET 5 OF 10

OLD LOOSAHATCHIE HIGHWAY 51
 EMERGENCY SEWER LINE REPLACEMENT
 EXISTING CONDITIONS
 PLAN & PROFILE
 STA 40+00 - 60+00

REGISTERED ENGINEER
 J. JUSTIN LEE
 STATE OF TENNESSEE
 NO. 024262
 EXPIRES 02/28/2022

SARP 10
 STATE OF TENNESSEE
 REHABILITATION PROGRAM MEMPHIS SEWER ASSESSMENT & RENOVATION

BLACK & VEATCH
 ENGINEERS ARCHITECTS
 SARP10 PROGRAM OFFICE
 3486 POPPLAR AVENUE, SUITE 230
 MEMPHIS, TENNESSEE 38111



NOTE:
ALL PIPES AND STRUCTURES BETWEEN L0010163 AND L0020173 TO BE REMOVED AND REPLACED PER SHEETS C1.5 - C1.8. L0010163 AND L0020173 TO REMAIN.



BLACK & VEATCH
SARP10 PROGRAM OFFICE
3486 POPLAR AVENUE, SUITE 230
MEMPHIS, TENNESSEE 38111

SARP10
OLD LOOSAATCHIE HIGHWAY 51
EMERGENCY SEWER LINE REPLACEMENT
EXISTING CONDITIONS
PLAN & PROFILE
STA 60+00 - 75+52.55

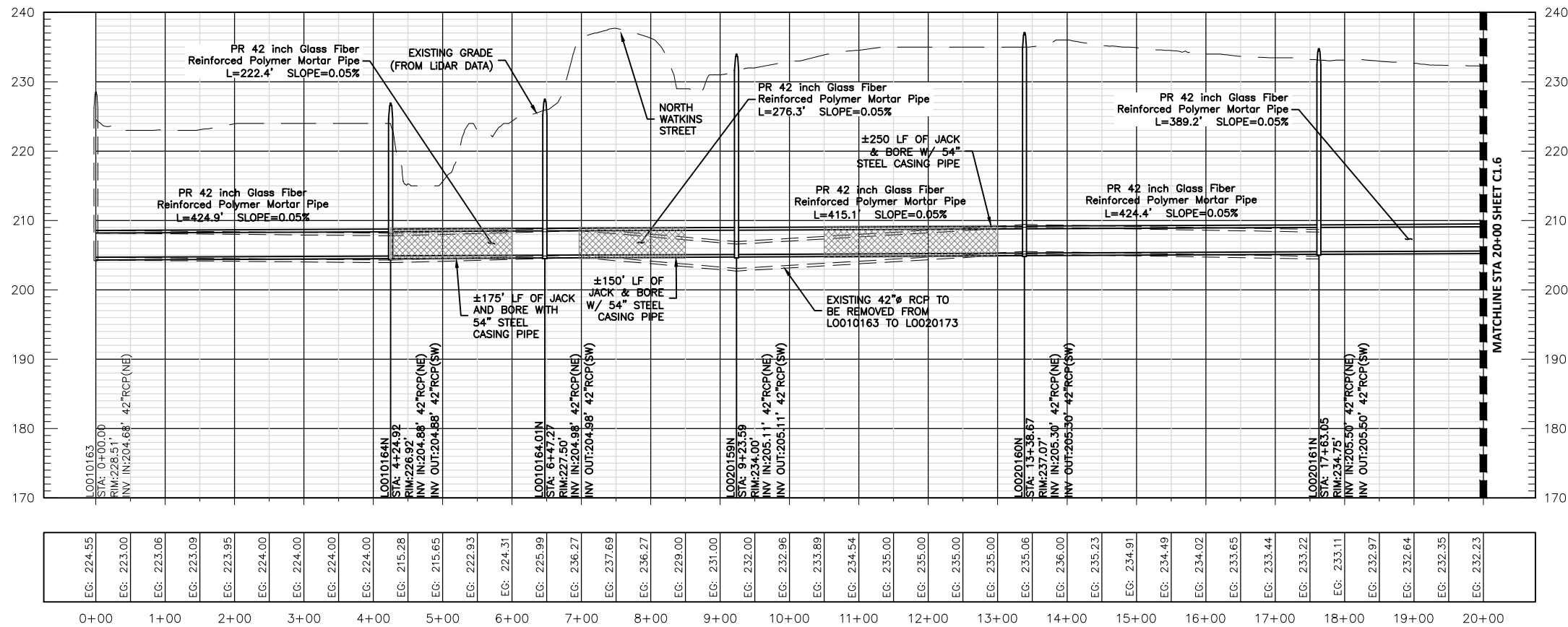
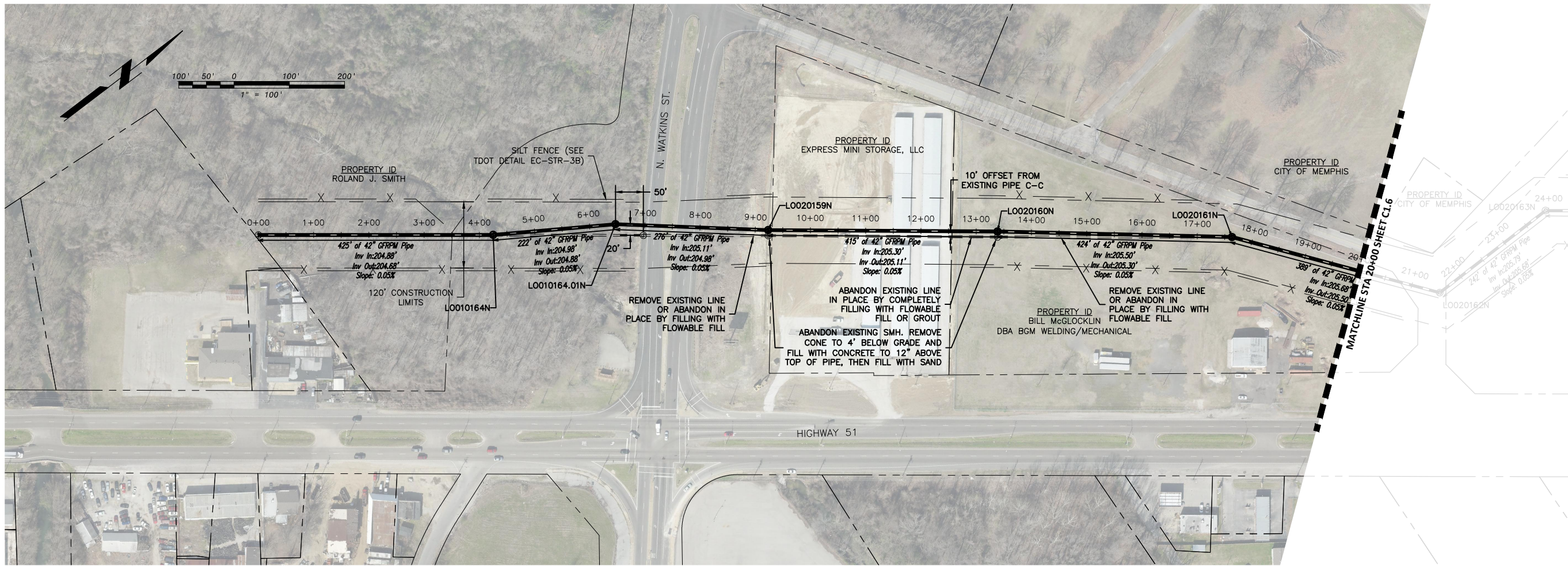
DESIGNED: JLA
DETAILED: JLA
CHECKED: BJD
APPROVED: BJD
DATE: 6/5/2015

0 1/2 1
IF THIS BAR DOES NOT MEASURE 1" THEN DRAWING IS NOT TO FULL SCALE
PROJECT NO.

C1.4
SHEET
6 OF 10

NO.	DATE	REVISIONS AND RECORD OF ISSUE	MO.	BY	CHK	APP
1	6/5/2015	ADDENDUM 2	1	JLA		

OLD LOOS P & P L0010163 - L0020175 EX.dwg XREF1:
SAVED: 6/5/2015 2:02 PM avntcj XREF2:
PLOTTED: 6/5/2015 2:48 PM XREF3:
USER: DWG VER: XREF4:



- NOTES:**
- ALL PIPES AND STRUCTURES BETWEEN L0010163 AND L0020173 TO BE REMOVED AND REPLACED PER SHEETS C1.5 - C1.8. L0010163 AND L0020173 TO REMAIN.
 - SEE CITY OF MEMPHIS STANDARD SEWER DETAILS FOR TYPICAL PRECAST MANHOLE. MANHOLES SHALL HAVE FLAT TOPS WITH AN INSIDE DIAMETER OF 6'

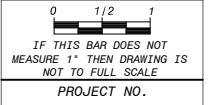


BLACK & VEATCH
 SARP10 PROGRAM OFFICE
 3486 POPLAR AVENUE, SUITE 230
 MEMPHIS, TENNESSEE 38111

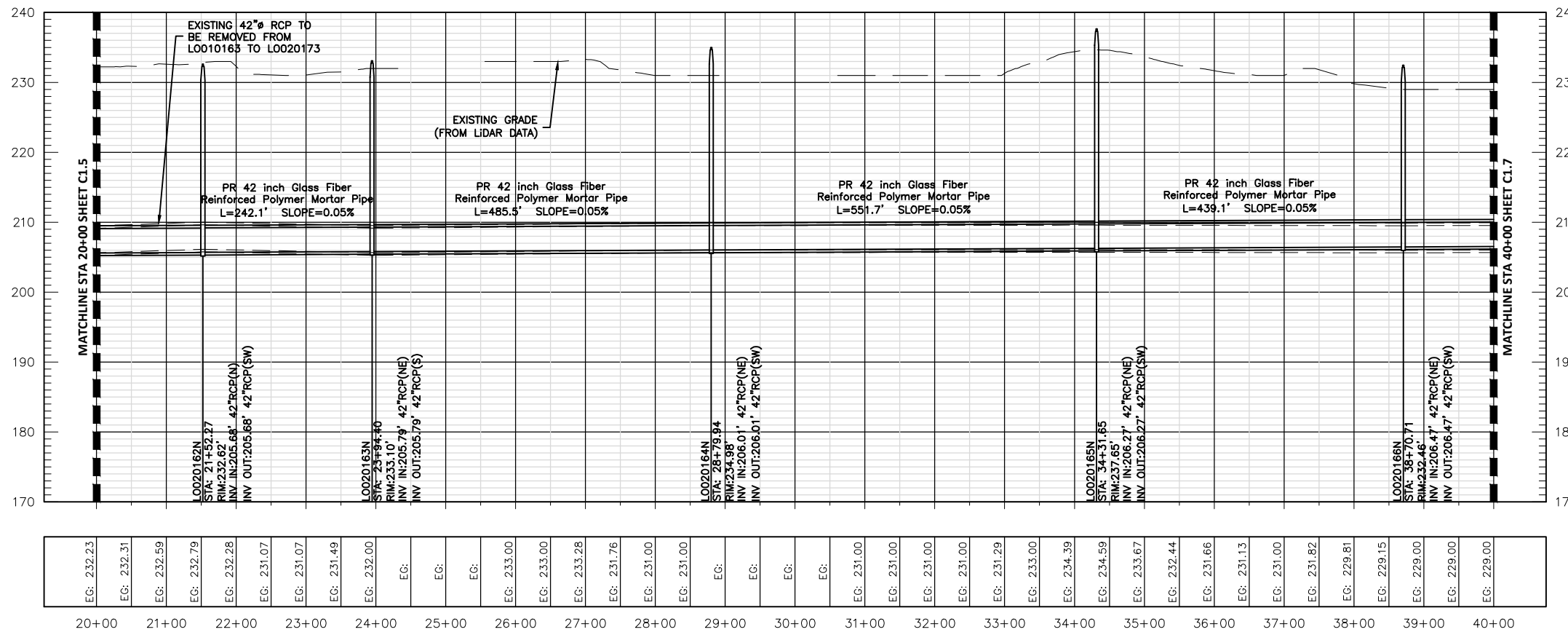
**SARP10
 OLD LOOSAHATCHIE HIGHWAY 51
 EMERGENCY SEWER LINE REPLACEMENT**

IMPROVED CONDITIONS
 PLAN & PROFILE
 STA 0+00 - 20+00

DESIGNED: JLA
 DETAILED: JLA
 CHECKED: BJD
 APPROVED: BJD
 DATE: 6/5/2015



PROJECT NO.
C1.5
 SHEET
 7 OF 10



EG: 232.23	EG: 232.31	EG: 232.59	EG: 232.79	EG: 232.28	EG: 231.07	EG: 231.07	EG: 231.49	EG: 232.00	EG:	EG:	EG:	EG:	EG: 233.00	EG: 233.00	EG: 233.28	EG: 231.76	EG: 231.00	EG: 231.00	EG:	EG:	EG:	EG:	EG: 231.00	EG: 231.00	EG: 231.00	EG: 231.00	EG: 231.29	EG: 233.00	EG: 234.39	EG: 234.59	EG: 235.67	EG: 232.44	EG: 231.66	EG: 231.13	EG: 231.00	EG: 231.82	EG: 229.81	EG: 229.15	EG: 229.00	EG: 229.00	EG: 229.00
------------	------------	------------	------------	------------	------------	------------	------------	------------	-----	-----	-----	-----	------------	------------	------------	------------	------------	------------	-----	-----	-----	-----	------------	------------	------------	------------	------------	------------	------------	------------	------------	------------	------------	------------	------------	------------	------------	------------	------------	------------	------------

- NOTES:
- ALL PIPES AND STRUCTURES BETWEEN L0010163 AND L0020173 TO BE REMOVED AND REPLACED PER SHEETS C1.5 - C1.8. L0010163 AND L0020173 TO REMAIN.
 - SEE CITY OF MEMPHIS STANDARD SEWER DETAILS FOR TYPICAL PRECAST MANHOLE. MANHOLES SHALL HAVE FLAT TOPS WITH AN INSIDE DIAMETER OF 6'

6/5/2015	ADDENDUM 2	REVISIONS AND RECORD OF ISSUE	NO.	BY	CHK	APP
6/5/2015						

DESIGNED: JLA
 DETAILED: JLA
 CHECKED: BJD
 APPROVED: BJD
 DATE: 6/5/2015

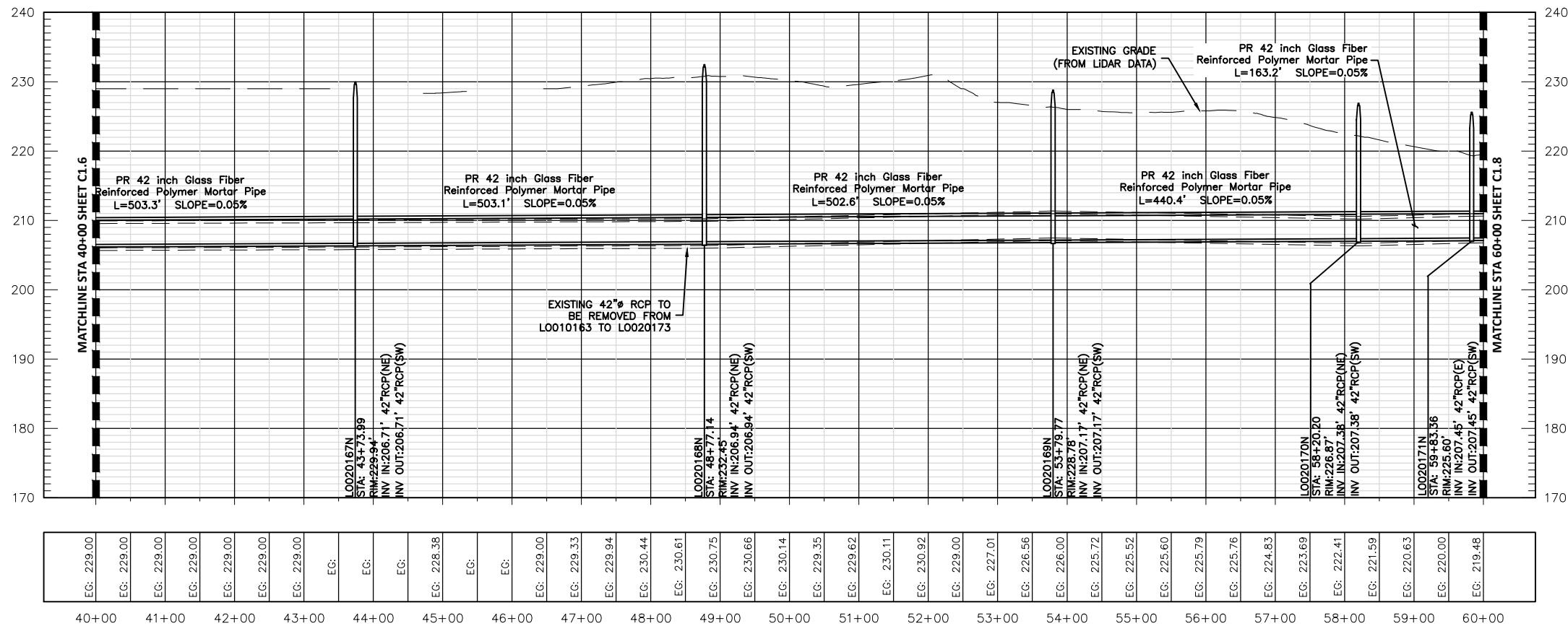
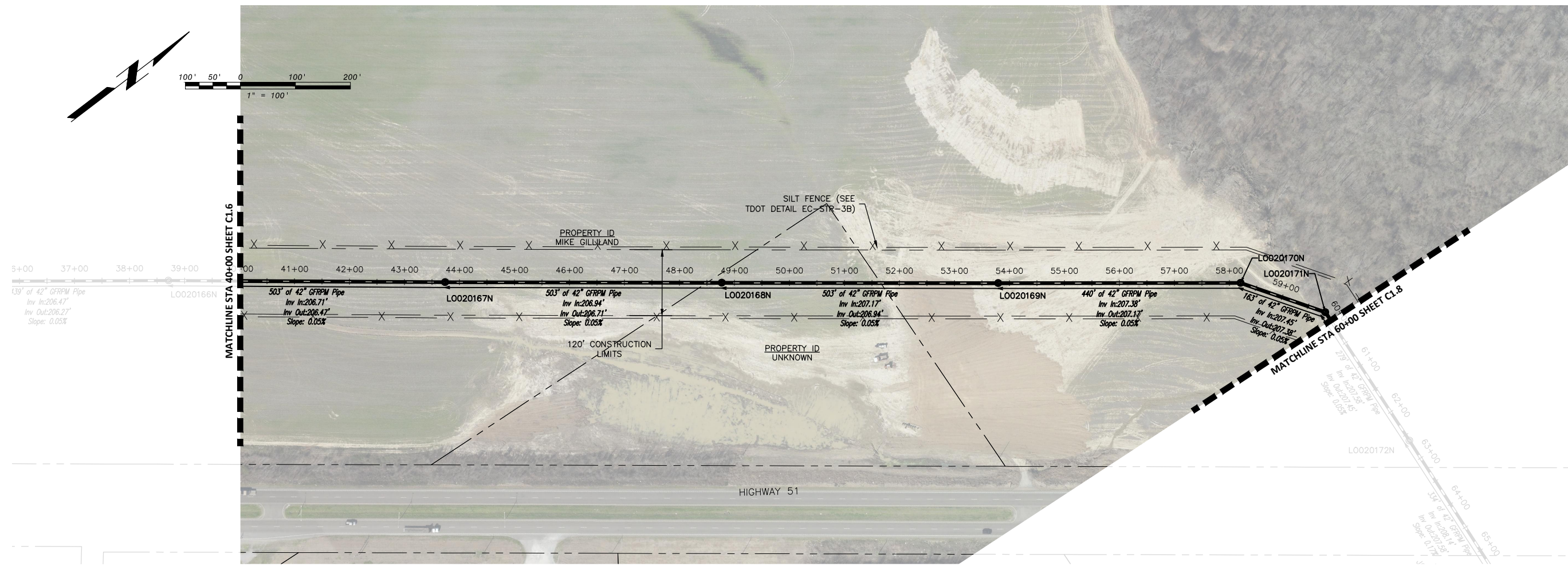
PROJECT NO. **C1.6**
 SHEET 8 OF 10

OLD LOOSAHATCHIE HIGHWAY 51
 EMERGENCY SEWER LINE REPLACEMENT
 IMPROVED CONDITIONS
 PLAN & PROFILE
 STA 20+00 - 40+00

BLACK & VEATCH
 SARP10 PROGRAM OFFICE
 3486 POPLAR AVENUE, SUITE 230
 MEMPHIS, TENNESSEE 38111

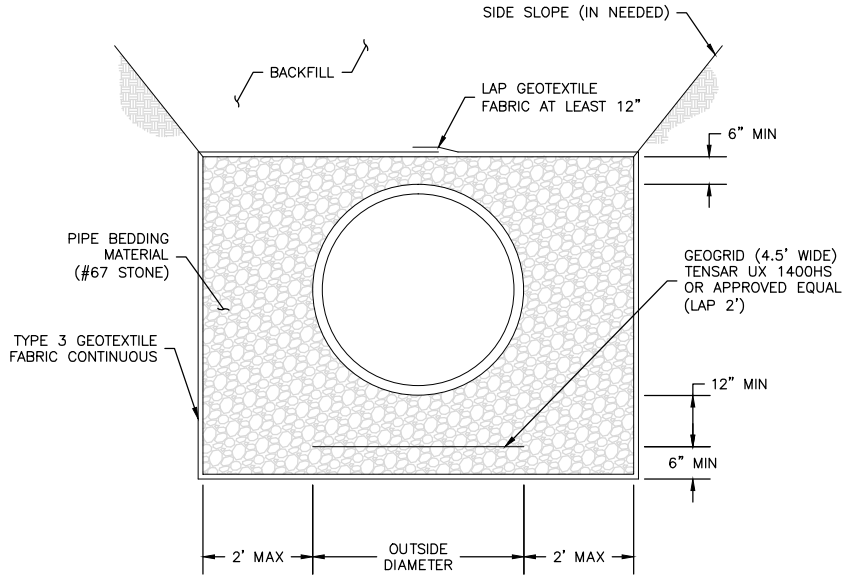
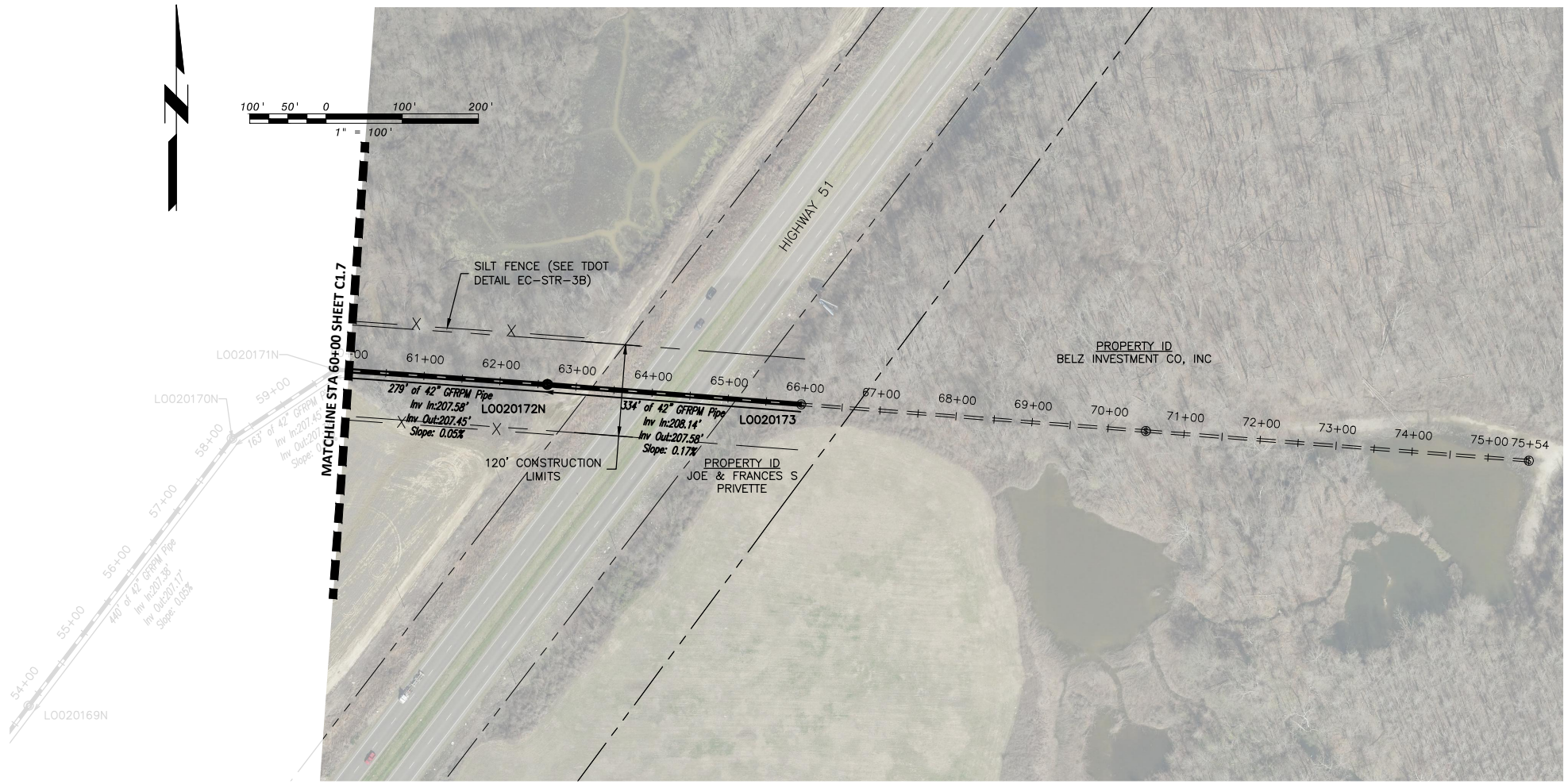
J. JUSTIN LEE
 REGISTERED ENGINEER
 NO. 0542052
 STATE OF TENNESSEE

F27000MG_PV
 D:\060810

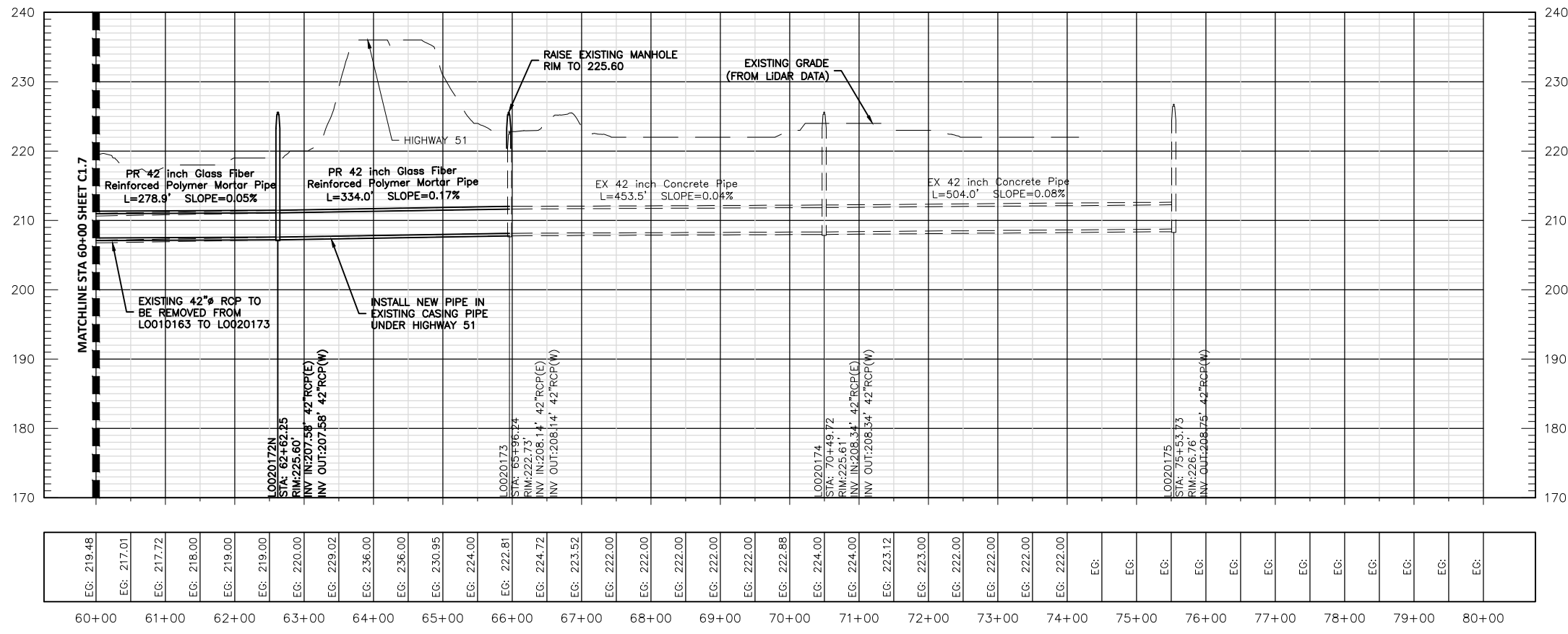


- NOTES:**
1. ALL PIPES AND STRUCTURES BETWEEN L0010163 AND L0020173 TO BE REMOVED AND REPLACED PER SHEETS C1.5 - C1.8. L0010163 AND L0020173 TO REMAIN.
 2. SEE CITY OF MEMPHIS STANDARD SEWER DETAILS FOR TYPICAL PRECAST MANHOLE. MANHOLES SHALL HAVE FLAT TOPS WITH AN INSIDE DIAMETER OF 6'

DATE	6/5/2015	ADDENDUM 2	REVISIONS AND RECORD OF ISSUE
NO.	1	JLA	MO. BY CK APP
OLD LOOS P & P L0010163 - L0020175 PR.dwg XREF1: SAVER: 6/15/2015 1:27 PM avertj PLOTTED: 6/15/2015 2:49 PM XREF2: USER: DWG VER: XREF4:			
SARP10 PROGRAM OFFICE 3486 POPLAR AVENUE, SUITE 230 MEMPHIS, TENNESSEE 38111			
SARP10 OLD LOOSAHATCHIE HIGHWAY 51 EMERGENCY SEWER LINE REPLACEMENT IMPROVED CONDITIONS PLAN & PROFILE STA 40+00 - 60+00			
DESIGNED:	JLA		
DETAILED:	JLA		
CHECKED:	BJD		
APPROVED:	BJD		
DATE:	6/5/2015		
IF THIS BAR DOES NOT MEASURE 1" THEN DRAWING IS NOT TO FULL SCALE			
PROJECT NO.			
C1.7 SHEET 9 OF 10			



PIPE BEDDING DETAIL
NOT TO SCALE



- NOTES:
- ALL PIPES AND STRUCTURES BETWEEN L0010163 AND L0020173 TO BE REMOVED AND REPLACED PER SHEETS C1.5 - C1.8. L0010163 AND L0020173 TO REMAIN.
 - SEE CITY OF MEMPHIS STANDARD SEWER DETAILS FOR TYPICAL PRECAST MANHOLE. MANHOLES SHALL HAVE FLAT TOPS AND AN INSIDE DIAMETER OF 6'.
 - EXISTING PLANS SHOW A CASING PIPE UNDER HIGHWAY 51. CONTRACTOR SHALL VERIFY THE EXISTENCE AND ELEVATIONS OF THIS PIPE PRIOR TO ANY CONSTRUCTION. NOTIFY THE ENGINEER OF ANY DISCREPANCIES.

DATE	6/5/2015	ADDENDUM 2	REVISIONS AND RECORD OF ISSUE	NO.	BY	CHK	APP
DATE	6/5/2015	ADDENDUM 2	REVISIONS AND RECORD OF ISSUE	NO.	BY	CHK	APP
DATE	6/5/2015	ADDENDUM 2	REVISIONS AND RECORD OF ISSUE	NO.	BY	CHK	APP

DESIGNED: JLA
 DETAILED: JLA
 CHECKED: BJD
 APPROVED: BJD
 DATE: 6/5/2015

PROJECT NO. **C1.8**
 SHEET 10 OF 10

IMPROVED CONDITIONS
 PLAN & PROFILE
 STA 60+00 - 75+53.73

OLD LOOSAHATCHIE HIGHWAY 51
 EMERGENCY SEWER LINE REPLACEMENT

SARP10 PROGRAM OFFICE
 3486 POPULAR AVENUE, SUITE 230
 MEMPHIS, TENNESSEE 38111

REGISTERED ENGINEER
 J. JUSTIN LEE
 STATE OF TENNESSEE
 NO. 0542052

BLACK & VEATCH