

NOTE:
 ALL PIPES AND STRUCTURES BETWEEN L0010163 AND L0020173 TO BE REMOVED AND REPLACED PER SHEETS C1.5 - C1.8. L0010163 AND L0020173 TO REMAIN.

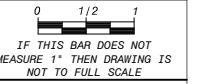
| NO. | DATE | REVISIONS AND RECORD OF ISSUE | NO. | BY | CHK | APP |
|-----|------|-------------------------------|-----|----|-----|-----|
| | | | | | | |

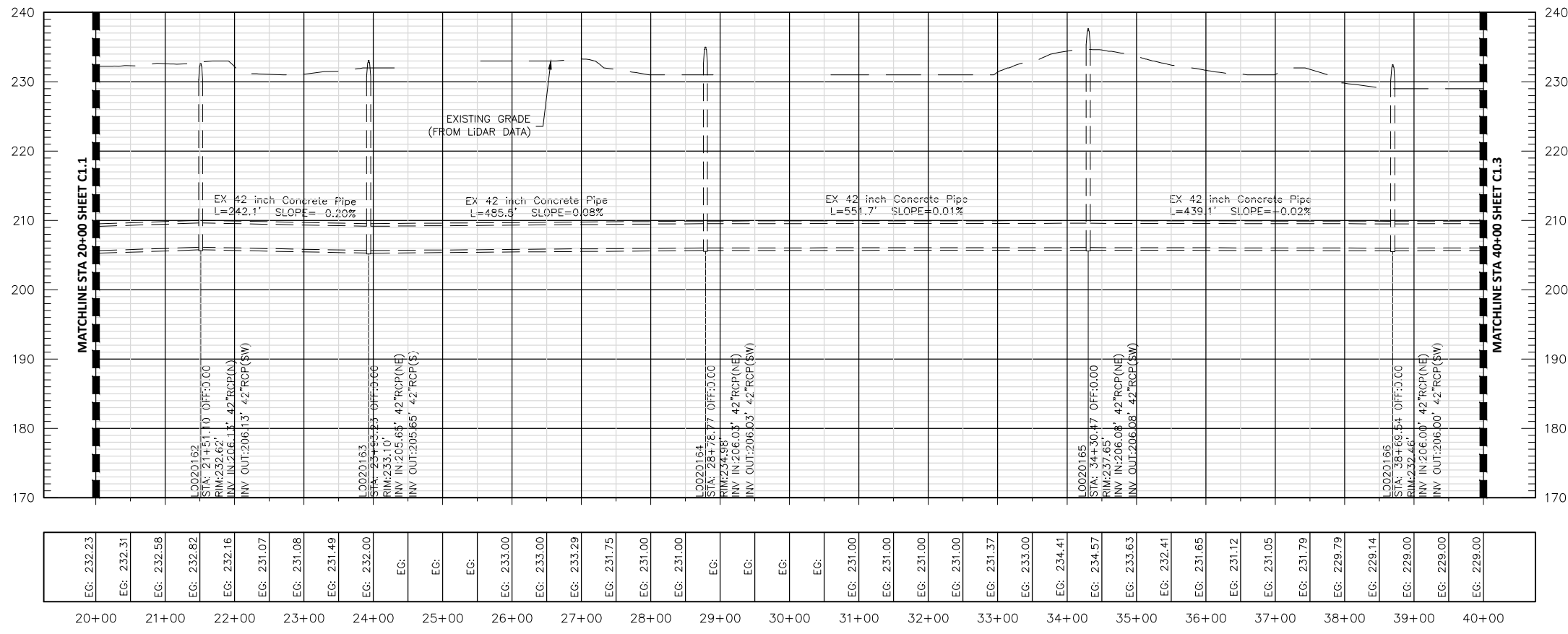


BLACK & VEATCH
 SARP10 PROGRAM OFFICE
 3486 POPLAR AVENUE, SUITE 230
 MEMPHIS, TENNESSEE 38111

SARP10
OLD LOOSAHATCHIE HIGHWAY 51
EMERGENCY SEWER LINE REPLACEMENT
 EXISTING CONDITIONS
 PLAN & PROFILE
 STA 0+00 - 20+00

DESIGNED: JLA
 DETAILED: JLA
 CHECKED: BJD
 APPROVED: BJD
 DATE: 05/22/2015

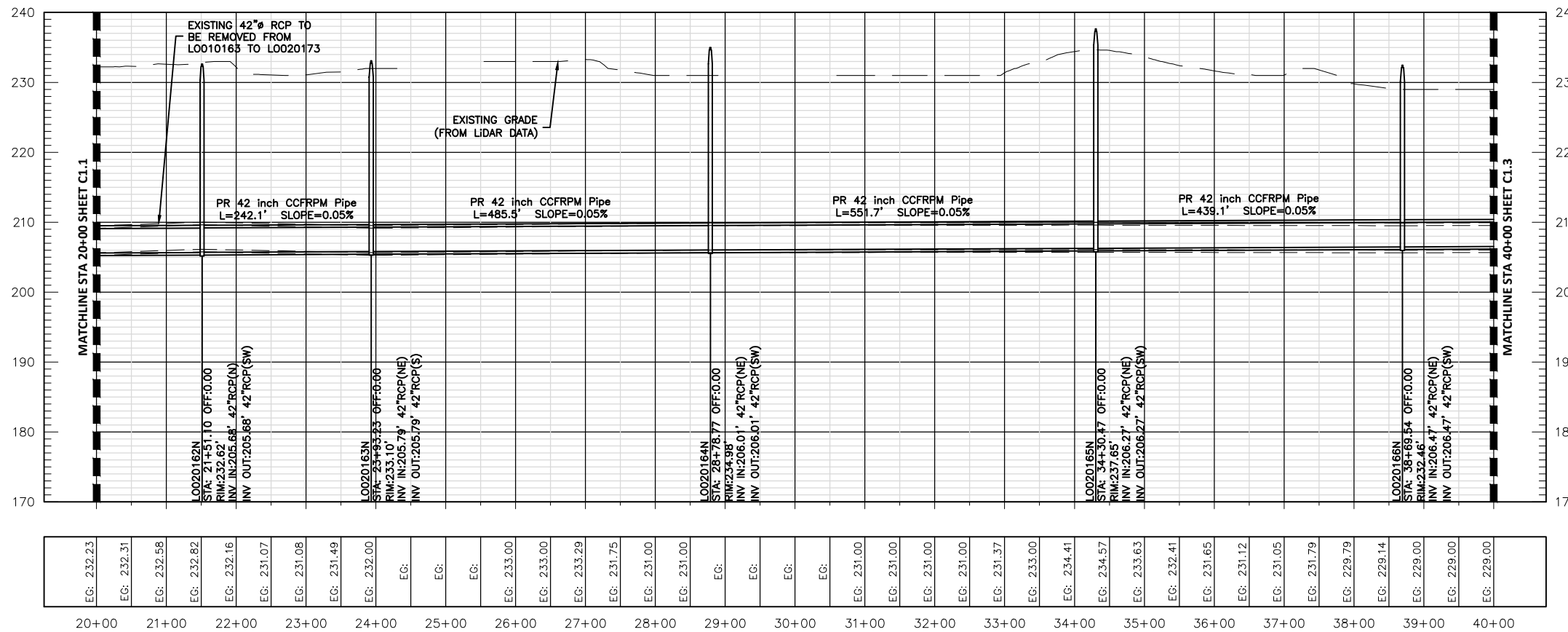




| | | | | | | | | | | | | | | | | | | | | | | | | | | | | | | | | | | | | | | | | | | | |
|------------|------------|------------|------------|------------|------------|------------|------------|------------|-------|-------|-------|------------|------------|------------|------------|------------|------------|-------|-------|-------|-----|------------|------------|------------|------------|------------|------------|------------|------------|------------|------------|------------|------------|------------|------------|------------|------------|------------|------------|------------|--|--|--|
| EG: 232.23 | EG: 232.31 | EG: 232.58 | EG: 232.82 | EG: 232.16 | EG: 231.07 | EG: 231.08 | EG: 231.49 | EG: 232.00 | EG: | EG: | EG: | EG: 233.00 | EG: 233.00 | EG: 233.29 | EG: 231.75 | EG: 231.00 | EG: 231.00 | EG: | EG: | EG: | EG: | EG: 231.00 | EG: 231.00 | EG: 231.00 | EG: 231.00 | EG: 231.37 | EG: 233.00 | EG: 234.41 | EG: 234.57 | EG: 233.63 | EG: 232.41 | EG: 231.65 | EG: 231.12 | EG: 231.05 | EG: 231.79 | EG: 229.79 | EG: 229.14 | EG: 229.00 | EG: 229.00 | EG: 229.00 | | | |
| 20+00 | 21+00 | 22+00 | 23+00 | 24+00 | 25+00 | 26+00 | 27+00 | 28+00 | 29+00 | 30+00 | 31+00 | 32+00 | 33+00 | 34+00 | 35+00 | 36+00 | 37+00 | 38+00 | 39+00 | 40+00 | | | | | | | | | | | | | | | | | | | | | | | |

NOTE:
ALL PIPES AND STRUCTURES BETWEEN L0010163 AND L0020173 TO BE REMOVED AND REPLACED PER SHEETS C1.5 - C1.8. L0010163 AND L0020173 TO REMAIN.

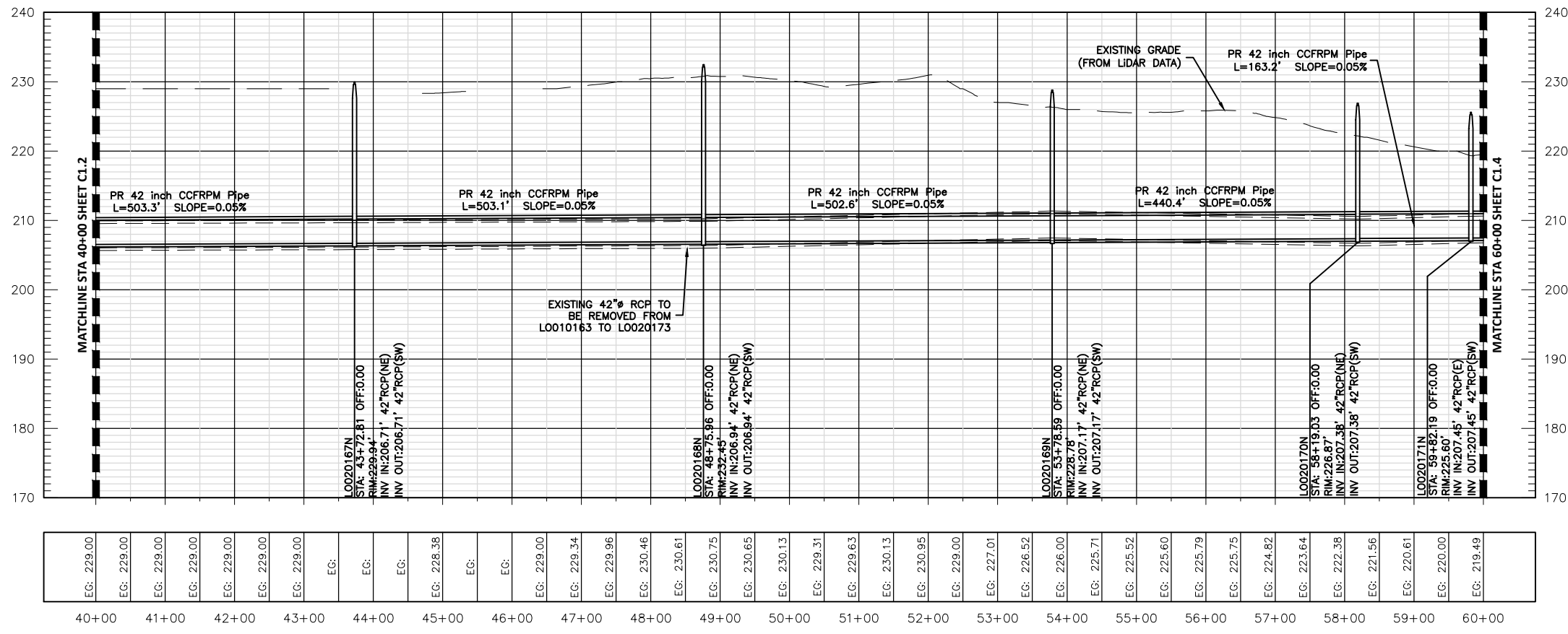
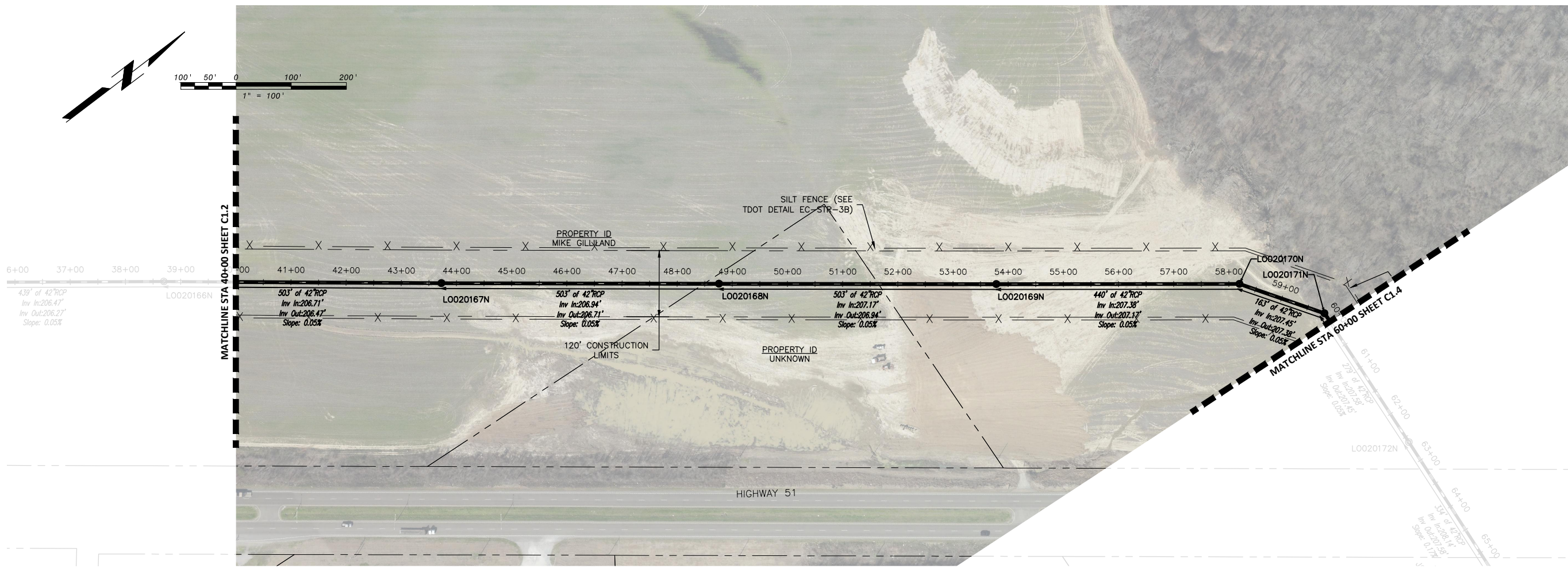
| | | | |
|---|--|--------------------------------|-----|
| DESIGNED: JLA | | DATE: 05/22/2015 | |
| DETAILED: JLA | | PROJECT NO. C1.2 SHEET 4 OF 10 | |
| CHECKED: BJD | | REVISIONS AND RECORD OF ISSUE | |
| APPROVED: BJD | | NO. | BY |
| DATE: 05/22/2015 | | 1 | CK |
| PROJECT NO. C1.2 SHEET 4 OF 10 | | DATE | APP |
| OLD LOOSAHATCHIE HIGHWAY 51 EMERGENCY SEWER LINE REPLACEMENT EXISTING CONDITIONS PLAN & PROFILE STA 20+00 - 40+00 | | DATE | APP |
| SARP10 PROGRAM OFFICE 3486 POPLAR AVENUE, SUITE 230 MEMPHIS, TENNESSEE 38111 | | DATE | APP |
| BLACK & VEATCH | | DATE | APP |
| SARP10 PROGRAM MEMPHIS SEWER ASSESSMENT & RENOVATION | | DATE | APP |
| SARP10 | | DATE | APP |
| OLD LOOS P & P L0010163 - L0020175.dwg | | DATE | APP |
| SAVED: 6/12/2015 10:01 AM (event) | | DATE | APP |
| PLOTTED: 6/12/2015 10:07 AM | | DATE | APP |
| USER: DWG.VER: | | DATE | APP |



- NOTES:**
1. ALL PIPES AND STRUCTURES BETWEEN L0010163 AND L0020173 TO BE REMOVED AND REPLACED PER SHEETS C1.5 - C1.8. L0010163 AND L0020173 TO REMAIN.
 2. ALL NEW MANHOLES TO BE 6' INSIDE DIAMETER (SEE CITY OF MEMPHIS STANDARD SEWER DETAILS)

| | | | | | | | | | | | | | | | | | | | | | | | | | | | | | | | | |
|------------|------------|------------|------------|------------|------------|------------|------------|------------|-------|-------|-------|-------|-------|------------|------------|------------|------------|------------|------------|------------|------------|------------|------------|------------|------------|------------|------------|------------|------------|------------|------------|------------|
| EG: 232.23 | EG: 232.31 | EG: 232.58 | EG: 232.82 | EG: 232.16 | EG: 231.07 | EG: 231.08 | EG: 231.49 | EG: 232.00 | EG: | EG: | EG: | EG: | EG: | EG: 231.00 | EG: 231.00 | EG: 231.00 | EG: 231.00 | EG: 231.00 | EG: 231.37 | EG: 233.00 | EG: 234.41 | EG: 234.57 | EG: 235.63 | EG: 232.41 | EG: 231.65 | EG: 231.12 | EG: 231.05 | EG: 231.79 | EG: 229.79 | EG: 229.14 | EG: 229.00 | EG: 229.00 |
| 20+00 | 21+00 | 22+00 | 23+00 | 24+00 | 25+00 | 26+00 | 27+00 | 28+00 | 29+00 | 30+00 | 31+00 | 32+00 | 33+00 | 34+00 | 35+00 | 36+00 | 37+00 | 38+00 | 39+00 | 40+00 | | | | | | | | | | | | |

| | | | | | |
|---|-------------------------------|-----|----|-----|-----|
| DATE | REVISIONS AND RECORD OF ISSUE | NO. | BY | CHK | APP |
| | | | | | |
| OLD L00S P & P L0010163 - L0020175.dwg XREF1: XREF2: XREF3: XREF4: USER: DWG. VER: | | | | | |
| | | | | | |
| | | | | | |
| SARP10 PROGRAM OFFICE 3485 POPLAR AVENUE, SUITE 230 MEMPHIS, TENNESSEE 38111 | | | | | |
| SARP10 OLD LOOSAHATCHIE HIGHWAY 51 EMERGENCY SEWER LINE REPLACEMENT IMPROVED CONDITIONS PLAN & PROFILE STA 20+00 - 40+00 | | | | | |
| DESIGNED: JLA DETAILED: JLA CHECKED: BJD APPROVED: BJD DATE: 05/22/2015 | | | | | |
| | | | | | |
| IF THIS BAR DOES NOT MEASURE 1" THEN DRAWING IS NOT TO FULL SCALE | | | | | |
| PROJECT NO. | | | | | |
| C1.6 SHEET 8 OF 10 | | | | | |



- NOTES:**
1. ALL PIPES AND STRUCTURES BETWEEN L0010163 AND L0020173 TO BE REMOVED AND REPLACED PER SHEETS C1.5 - C1.8. L0010163 AND L0020173 TO REMAIN.
 2. ALL NEW MANHOLES TO BE 6' INSIDE DIAMETER (SEE CITY OF MEMPHIS STANDARD SEWER DETAILS)

| | | | | | | | | | | | | | | | | | | | | | | | | | | | | | | | | | | | | | | | | | |
|------------|------------|------------|------------|------------|------------|------------|------------|-------|-------|-------|------------|-------|-------|------------|------------|------------|------------|------------|------------|------------|------------|------------|------------|------------|------------|------------|------------|------------|------------|------------|------------|------------|------------|------------|------------|------------|------------|------------|------------|------------|------------|
| EG: 229.00 | EG: 229.00 | EG: 229.00 | EG: 229.00 | EG: 229.00 | EG: 229.00 | EG: 229.00 | EG: 229.00 | EG: | EG: | EG: | EG: 228.38 | EG: | EG: | EG: 229.00 | EG: 229.34 | EG: 229.96 | EG: 230.46 | EG: 230.61 | EG: 230.75 | EG: 230.65 | EG: 230.13 | EG: 229.31 | EG: 229.63 | EG: 230.13 | EG: 230.95 | EG: 229.00 | EG: 227.01 | EG: 226.52 | EG: 226.00 | EG: 225.71 | EG: 225.52 | EG: 225.60 | EG: 225.79 | EG: 225.75 | EG: 224.82 | EG: 223.64 | EG: 222.38 | EG: 221.56 | EG: 220.61 | EG: 220.00 | EG: 219.49 |
| 40+00 | 41+00 | 42+00 | 43+00 | 44+00 | 45+00 | 46+00 | 47+00 | 48+00 | 49+00 | 50+00 | 51+00 | 52+00 | 53+00 | 54+00 | 55+00 | 56+00 | 57+00 | 58+00 | 59+00 | 60+00 | | | | | | | | | | | | | | | | | | | | | |

| DATE | REVISIONS AND RECORD OF ISSUE | NO. | BY | CHK | APP |
|------|-------------------------------|-----|----|-----|-----|
| | | | | | |

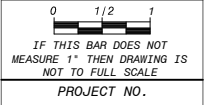
OLD LOOS P & P L0010163 - L0020175.dwg
 XREF1:
 XREF2:
 XREF3:
 XREF4:
 USER:
 DWG. VER:

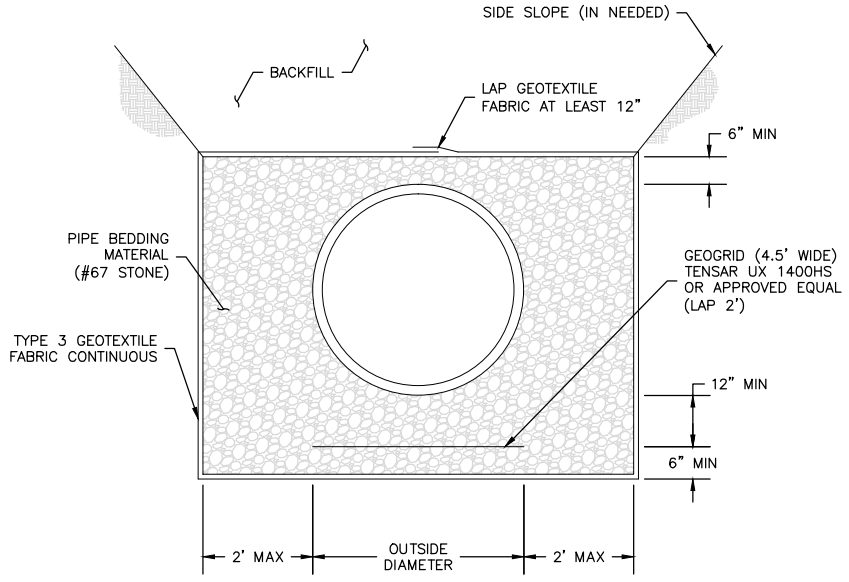
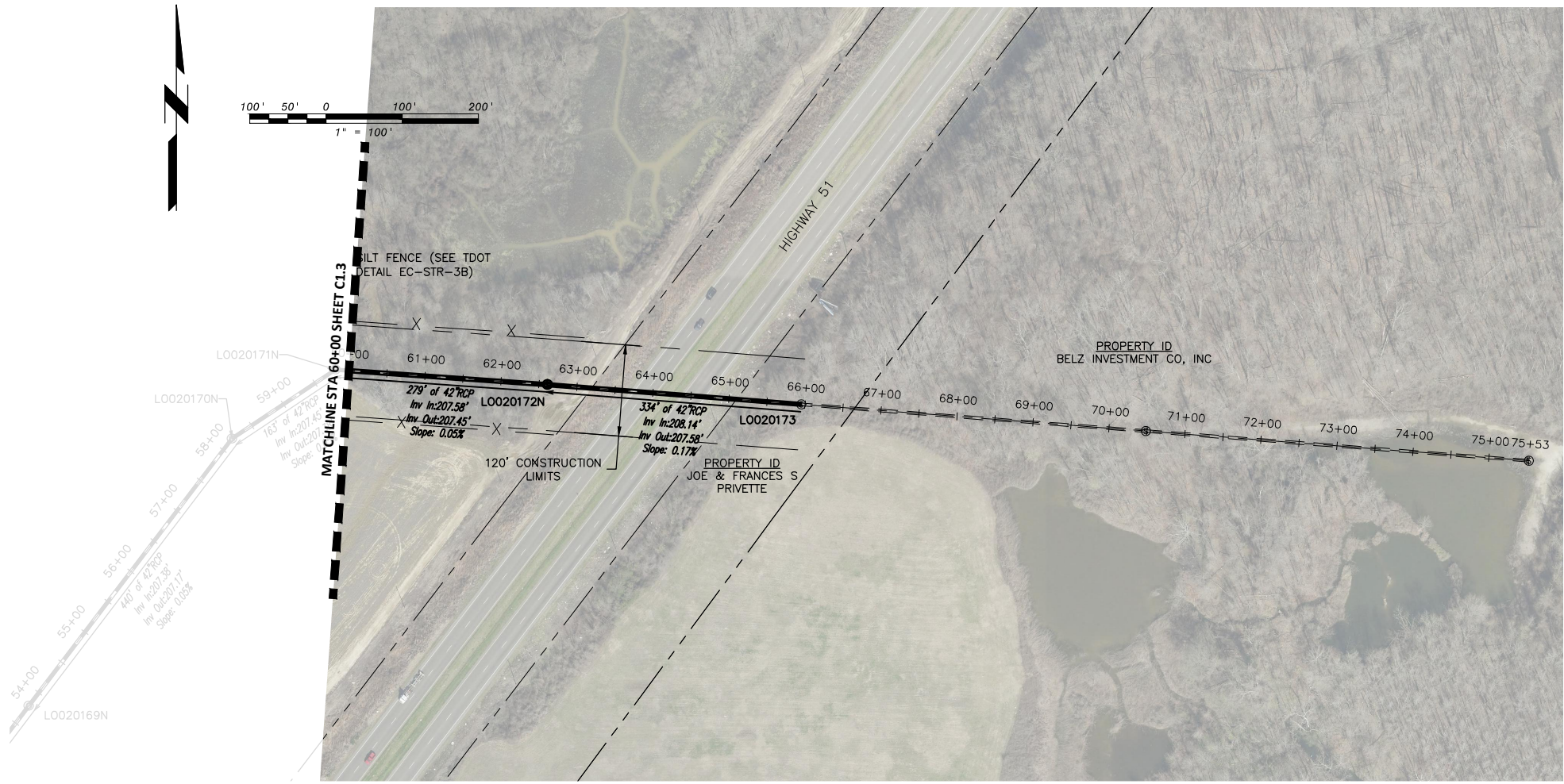


BLACK & VEATCH
 SARP10 PROGRAM OFFICE
 3486 POPLAR AVENUE, SUITE 230
 MEMPHIS, TENNESSEE 38111

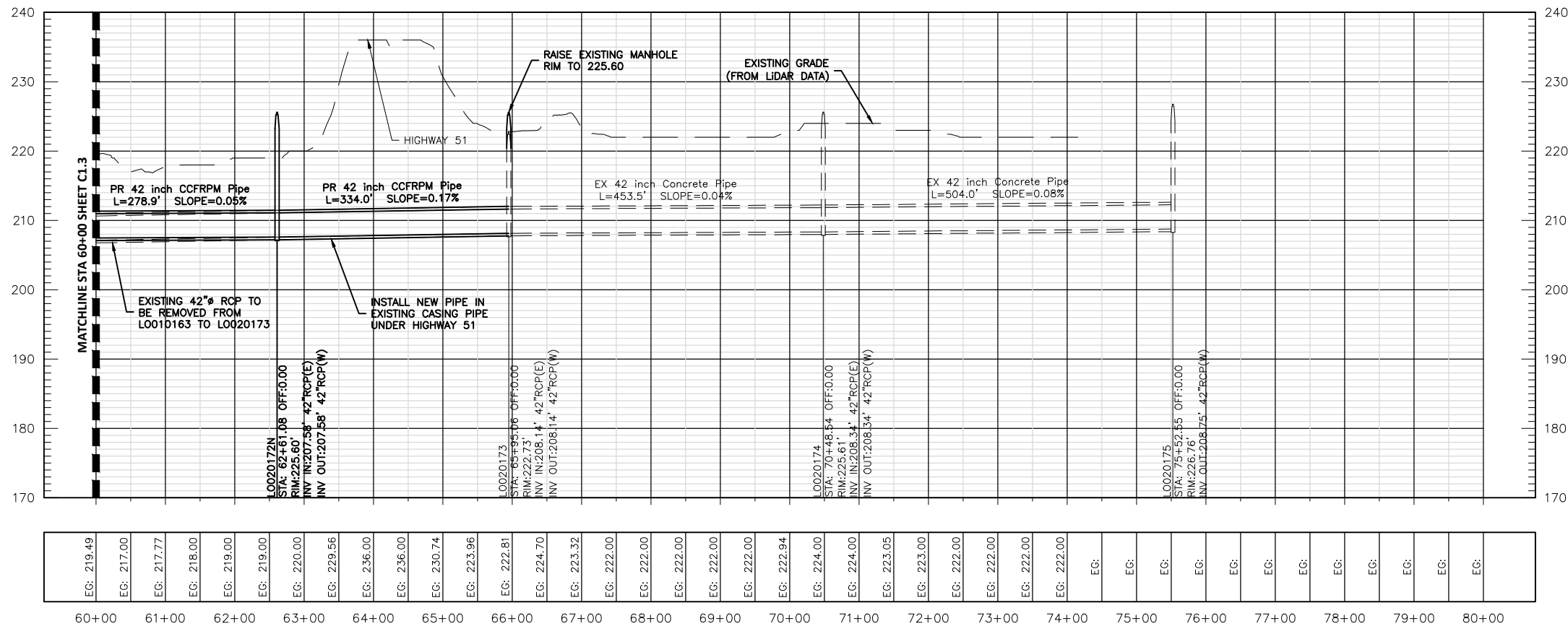
SARP10
 OLD LOOSAHATCHIE HIGHWAY 51
 EMERGENCY SEWER LINE REPLACEMENT
 IMPROVED CONDITIONS
 PLAN & PROFILE
 STA 40+00 - 60+00

DESIGNED: JLA
 DETAILED: JLA
 CHECKED: BJD
 APPROVED: BJD
 DATE: 05/22/2015





PIPE BEDDING DETAIL
NOT TO SCALE



- NOTES:
- ALL PIPES AND STRUCTURES BETWEEN L0010163 AND L0020173 TO BE REMOVED AND REPLACED PER SHEETS C1.5 - C1.8. L0010163 AND L0020173 TO REMAIN.
 - ALL NEW MANHOLES TO BE 6' INSIDE DIAMETER (SEE CITY OF MEMPHIS STANDARD SEWER DETAILS)

| NO. | DATE | REVISIONS AND RECORD OF ISSUE | NO. | BY | CHK | APP |
|-----|------------|-------------------------------|-----|-----|-----|-----|
| 1 | 05/22/2015 | ISSUED FOR PERMIT | | JLA | | |
| 2 | 06/12/2015 | REVISED PER COMMENTS | | BJD | | |
| 3 | 06/12/2015 | REVISED PER COMMENTS | | BJD | | |
| 4 | 06/12/2015 | REVISED PER COMMENTS | | BJD | | |



BLACK & VEATCH
MEMPHIS OFFICE
3485 POPLAR AVENUE, SUITE 230
MEMPHIS, TENNESSEE 38111

SARP10
OLD LOOSAHATCHIE HIGHWAY 51
EMERGENCY SEWER LINE REPLACEMENT
IMPROVED CONDITIONS
PLAN & PROFILE
STA 60+00 - 75+52.55

DESIGNED: JLA
DETAILED: JLA
CHECKED: BJD
APPROVED: BJD
DATE: 05/22/2015

0 1/2 1
IF THIS BAR DOES NOT
MEASURE 1" THEN DRAWING IS
NOT TO FULL SCALE

PROJECT NO.
C1.8
SHEET
10 OF 10