

Appendix C

Fats, Oils, and Grease Management Program

City of Memphis

Fats, Oils, and Grease (FOG) Plan

March 2011

CDM

Contents

Section 1 Introduction

1.1	Purpose	1-1
1.2	History	1-1

Section 2 FOG Program Management

2.1	FOG Program Department.....	2-1
	2.1.1 Organization.....	2-1
	2.1.2 Training.....	2-1
	2.1.3 Communications.....	2-1
2.2	Data Records	2-3
	2.2.1 FOG Documents	2-3
	2.2.2 GIS.....	2-3
2.3	Related Documents	2-5
2.4	Quarterly Report.....	2-5

Section 3 Food Establishments

3.1	Food Establishment Permits	3-1
	3.1.1 Permit Acquisition.....	3-1
	3.1.2 GRE Design	3-1
	3.1.3 Permit Requirements.....	3-3
3.2	GRE Inspection	3-3
	3.2.1 Inspection Procedure	3-4
	3.2.2 Notice of Violation.....	3-4
	3.2.3 Civil Penalty	3-4
3.3	Hauled Waste.....	3-4

Section 4 Public Education

4.1	Apartment Complexes.....	4-1
4.2	Can the Grease	4-1
4.3	Grease Collection Tote.....	4-2
4.3	Other Programs.....	4-2

Definitions and Acronyms

Figures

Figure 2-1: Organization Chart.....	2-2
Figure 2-2: GIS Data	2-4
Figure 3-1: GRE Application Process.....	3-2

Appendices

- Appendix A – Memphis City Codes Chapter 33-112: Food Establishment Wastewater*
- Appendix B - Quarterly Report*
- Appendix C – Food Establishment Application*
- Appendix D – Food Establishment Permit*
- Appendix E – Food Establishment Denial Letter*
- Appendix F – GRE Maintenance Log*
- Appendix G – Inspection Checklist/NOV*
- Appendix H – Approved Waste Haulers*
- Appendix I – Waste Hauling Permit*
- Appendix J – Liquid Waste Manifest*
- Appendix K – Waste Log*
- Appendix L - Door Hanger*
- Appendix M - FOG Pamphlets*
- Appendix N - FOG Press Release*

Section 1

Introduction

FOG is one of the primary causes of sanitary sewer blockages in wastewater collection systems across the United States. "FOG" refers to fats, oils and grease, which are commonly found in such things as meats, sauces, gravy, dressings, deep-fried foods, baked goods, cheeses, butter, and other manufactured food and non-food items.

FOG wastes are generated by residents and businesses processing or serving food and other products. Businesses include eating and drinking establishments, caterers, hospitals, nursing homes, day care centers, schools and grocery stores, and will be collectively referred to as "food establishments."

In addition, many industries also produce a waste stream that may contain varying levels of FOG by-products from their manufacturing process.

FOG waste is often washed into the plumbing and drainage system and on to the wastewater collection system, usually through a kitchen sink or process of floor drain. Grease hardens to the insides of sewer pipes and, over time, the buildup can block the entire pipe.

When sewer pipelines become blocked with grease, sewage has the potential to flow out of manholes. Sewer overflows pose a threat to public health, adversely affect aquatic life, and often are expensive to clean up.

1.1 Purpose

The prevention of FOG accumulation in sewer systems requires organized programs with proven effectiveness. This document outlines the programs utilized by the City of Memphis— both historically effective programs and new expanded programs, intended for further improvement. This is a working document and should be reviewed and updated as deemed appropriate, at a minimum of once annually.

1.2 History

FOG has long been identified as a major cause of sewer overflows in the City of Memphis (City), and grease from food establishments and local residents has been recognized as the primary contributor of FOG waste.

As part of the City's FOG Control Program, the City Division of Public Works took over control of the Food Establishment Waste Discharge (FEWD) Program from the City Health Department in 1997. The existing Sewer Use Ordinance at that time gave authority to Codes to require all new food establishments to install grease traps, or grease removal equipment (GRE). This transfer of responsibility allowed the City to take a proactive role and approach to the requirements of the FEWD applicants and to the overall inspection program of these facilities.

The City adopted into its Code of Ordinances a grease control program, outlined in the Sewer Use Ordinance in Section 33-112 which allows the City to permit, regulate, fine and control the FEWD program. Chapter 33-112: Food Establishment Wastewater is included in *Appendix A*.

Since the program's inception, approximately 3,200 food establishments have been fitted with grease traps, or grease removal equipment (GRE), either retroactively or as new establishments. The number of SSOs has been reduced 67 percent. The existing FEWD Program is presented more thoroughly in Section 3.

In May 2004, the City submitted a Grease Management, Operation, and Maintenance Plan (GMOM) to the Tennessee Department of Environment and Conservation (TDEC) outlining the further development of a FOG control program. TDEC approved the GMOM program in a letter dated October 31, 2005.

Since the October 2005 approval of the GMOM by TDEC, the City has continually made improvements in the control of FOG in the collection system. This FOG plan supersedes prior submissions and outlines the existing programs and protocol for public education, permitting, inspection, and issuance of civil penalties, as well as further expansion and improvements of the FOG program.

Section 2

FOG Program Management

2.1 FOG Program Department

2.1.1 Organization

The Public Works Division is responsible for the implementation of the City wide Fats, Oils, and Grease (FOG) Program. Specifically, the Wastewater Collection Division Systems oversees the program implementation by the Environmental Engineer and staff responsible for its implementation. An organization chart illustrating the current overall organization is included in Figure 2-1.

The personnel within the Environmental Engineering FOG Program include an Environmental Engineer and Inspectors, with plans to hire additional Inspectors and an Administrative Clerk. These hires will be made by approximately July 1, 2011. At that time, the FOG staff will be comprised of an Environmental Engineer, an Administrative Clerk, and four Inspectors. If additional assistance is needed to support these inspectors, staff from Environmental Maintenance is cross-trained and can assist with the regular inspections of facilities. The Environmental Engineer, who reports to the Administrator of Wastewater Collection Systems, is responsible for overseeing the inspection schedule, issuing permits, and maintaining data and records. The Administrative Clerk performs typical administrative duties including managing records and filing permits, inspection schedules, and forms. The inspectors perform the grease removal equipment (GRE) inspections and meet with citizens and food establishments as required for educational and training purposes.

2.1.2 Training

New inspectors shall be provided a manual containing FOG inspection forms (including instructions), SOPs and examples of properly completed inspection checklists. Staff shall provide one-on-one training to the employee to ensure competence. The inspector will be provided a variety of reference resources as an introduction to the FOG program. Emphasis will be placed on the fundamentals of grease management and its relation to the wastewater collection system. On the job training will be provided to familiarize the employee with inspection techniques, administrative review procedures, customer relations, grease removal equipment, variety of FEWD establishments and enforcement protocol.

Conferences and seminars will be utilized as appropriate to keep employees abreast of up to date technology and FOG management trends.

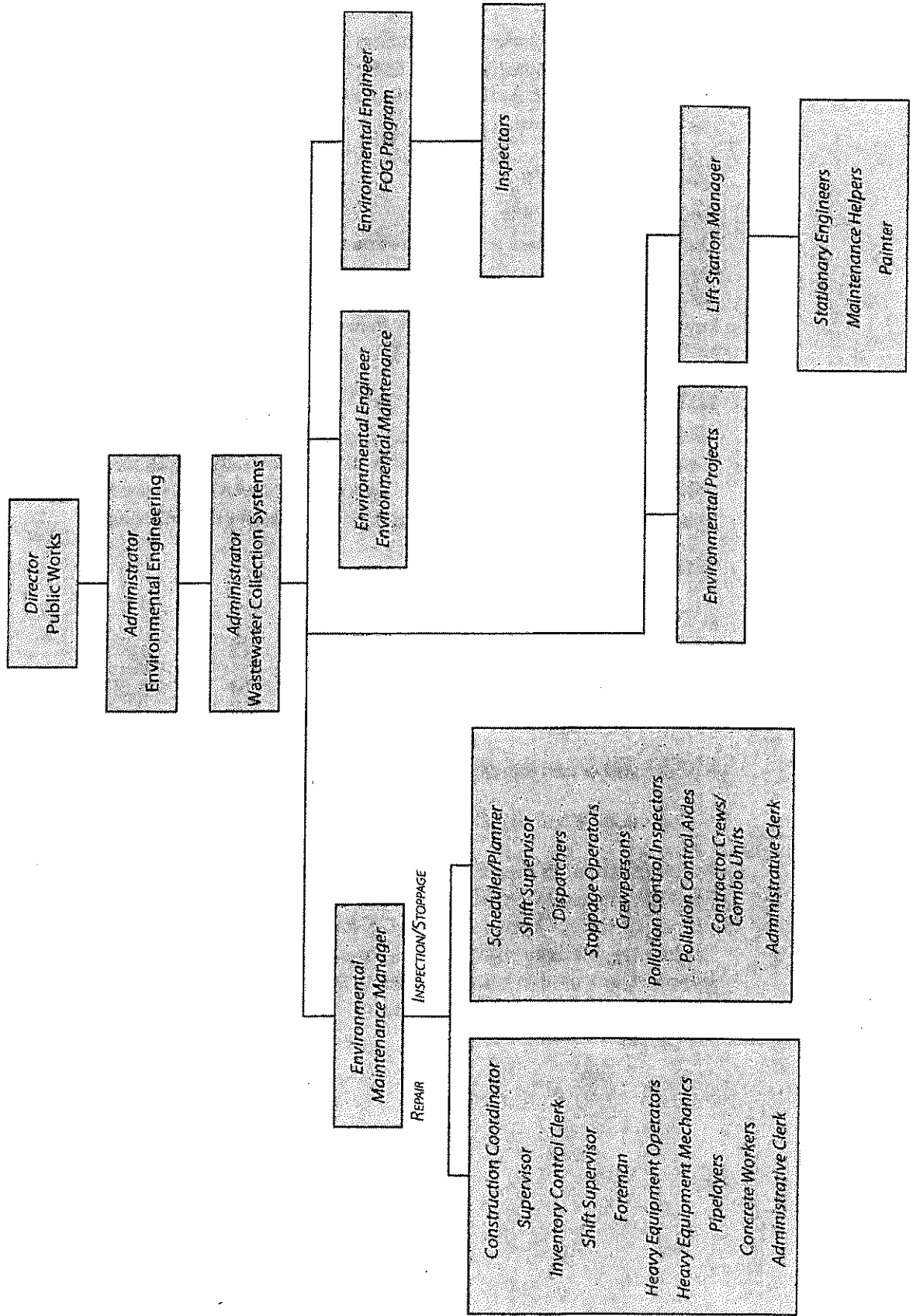
2.1.3 Communications

In order for the FOG Program to work effectively throughout the Public Works Division, communication between members of the Wastewater Collection Systems Department is vital to its overall success. In order to achieve this level of communications, the FOG manager attends SSO meetings held within the

Section 2
FOG Program Management

Environmental Maintenance Department, and in fact, has recently relocated its staff and office space to the Environmental Maintenance facility to allow for better coordination and communication of duties and work. The attendance at SSO review meetings allows for better coordination of the recently occurred SSOs and the prioritization of food establishment inspections within the City service area. In addition, as indicated Environmental Maintenance staff may assist FOG staff as needed with inspections and public education efforts. Based on this need, cross-training and education programs occur between multiple Departments within the Public Works Division.

Figure 2-1
 CITY OF MEMPHIS
 PUBLIC WORKS ORGANIZATIONAL CHART



The FOG program works in conjunction with the Memphis and Shelby County Department of Construction Code Enforcement (Codes) to issue permits, as discussed more in Section 3. These two departments have periodic meetings to discuss GRE and related permitting issues.

2.2 Data Records

2.2.1 FOG documents

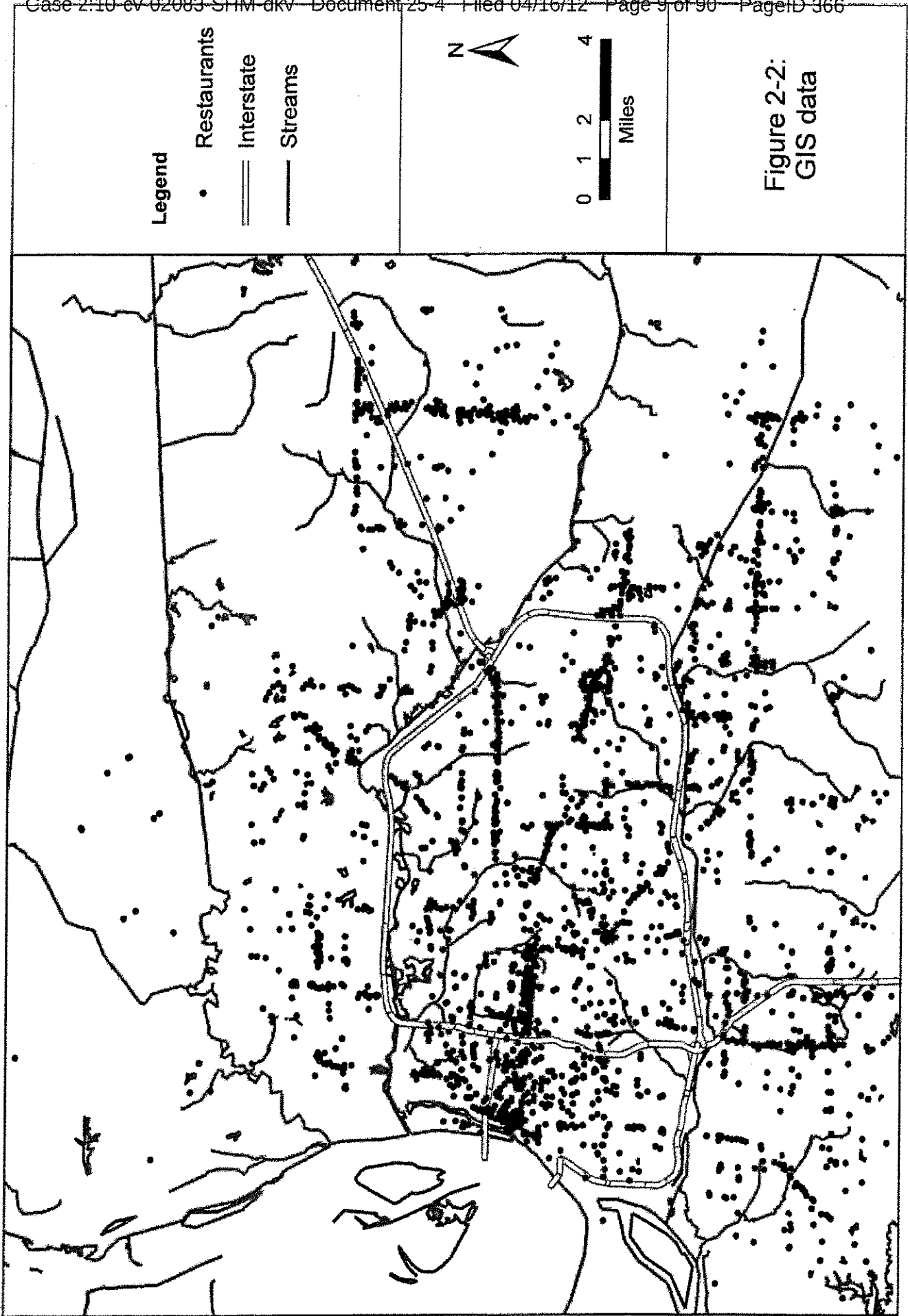
The FOG program uses multiple documents to record information from their inspections. These documents include permits, records, and forms as discussed in the following sections. Food establishments maintain their own inspections records, GRE maintenance, and permits. The City maintains all paperwork for food establishments and hauled waste to the Stiles WWTP.

2.2.2 GIS

Although the City does not maintain a comprehensive sewer mapping system on a Geographic Information System (GIS) platform, the City keeps records of each SSO in a GIS database to spatially evaluate the location of an SSO. Currently, the City has data from the year 2005 to the present, which includes the following:

- Date
- Time
- Volume
- Cause of the SSO
- Call number and dispatch number
- Complaint issued, if called in

Every restaurant in the city is also maintained in a GIS database. This data aids the Food Establishment program described in Section 3. Figure 2-2 shows the GIS data utilized by the FOG program. This GIS database is maintained by the Environmental Engineering Manager and is kept up-to-date as new facilities are permitted. This information is used to better coordinate the inspection of grease facilities due to prioritization based on SSO activity.



2.3 Related Documents

As indicated in the Public Works Division organization chart (Figure 2-1), the FOG Program is closely interrelated and aligned to other programs within the Wastewater Collection Systems Department. The following list shows some of the "cross-over" documents related to the FOG program.

City of Memphis Sewer Use Ordinance. As mentioned in other Sections of this document, the Sewer Use Ordinance is part of The City of Memphis' Code of Ordinances. Section 33-112 outlines the requirements of Food Establishments.

SORP. The Sewer Overflow Response Plan describes the protocol in the event of a SSO. If the SSO is caused by grease, the public notification protocol overlaps with the FOG public education program.

Standard Operating Procedure for the Collection System. Standard operating procedures (SOPs) for sewer cleaning procedures are outlined for FOG accumulation within the collection system. Reactive and preventative maintenance cleaning will help prevent SSOs as the result of FOG.

2.4 Quarterly Reports

The City submits a quarterly report to the TDEC detailing the updated FEWD program and data about inspections performed for the current quarter. An example of a quarterly report is included in *Appendix B*.

In order to ascertain the effectiveness of the FOG program, performance measures have been established for multiple phases of the overall program. The following are determined and reported in the quarterly report to assess the overall program:

- Number of Notice of Violations (NOV) per year and per 100 total food establishments (see Section 3)
- Number of FOG and "Can the Grease" door hangers distributed (see Section 4)
- Number of can lids distributed as part of the "Can the Grease" program (see Section 4)
- Number of food establishment (GRE) inspections (see Section 3)
- Number of follow-up inspections (see Section 3)
- Number of grease related SSOs

Section 3

Food Establishments

As one of the largest identified contributors of grease to the sewer system, food establishments are required to have a Food Establishment Wastewater Discharge (FEWD) permit and to comply with the program as outlined in this section.

3.1 Food Establishment Permits

Chapter 33-112 of the City's Ordinances (*Appendix A*) outlines the requirements of a FEWD.

3.1.1 Permit Acquisition

The Environmental Engineer, who manages the FOG program, works in conjunction with the Memphis and Shelby County Department of Construction Code Enforcement (Codes) when permitting new food establishments. Figure 3-1 highlights a flowchart demonstrating the process of a new food establishment in obtaining a permit from the City of Memphis.

To receive a permit, a new food establishment applicant must first apply to Codes, who then refers the applicant to the FOG program. The Engineer will process, review, and evaluate the GRE for its adequacy based on specifications, size requirement, sewer capacity, and other required factors. *Appendix C* includes a copy of the application form.

Once the GRE is approved ("green sticker"), the applicant receives a discharge permit, and the initial GRE inspection is scheduled. An example of the Food Establishment Wastewater Discharge Program Permit is included in *Appendix D*.

If the GRE is denied ("red sticker"), a denial letter explaining the GRE requirements is sent to the applicant. An example of a denial letter is included in *Appendix E*. The applicant must correct the proposed GRE application and submit again through Codes for approval.

3.1.2 GRE design

Standard GRE designs approved by both Engineer and Codes are available to the applicant for reference. In general, these designs will be approved, provided the size of the GRE has been selected in accordance with the size of the food establishment. New technologies or nonstandard GRE may be evaluated on a case-by-case basis.

Standard design criteria for GRE is included in Section 33-112-01, A of the City of Memphis Sewer Use Ordinance, which states that the GRE tank must be 15 gallons per seating capacity, with a minimum of 750 gallons and maximum of 3000 gallons. Multiple tanks may be used as needed at each establishment.

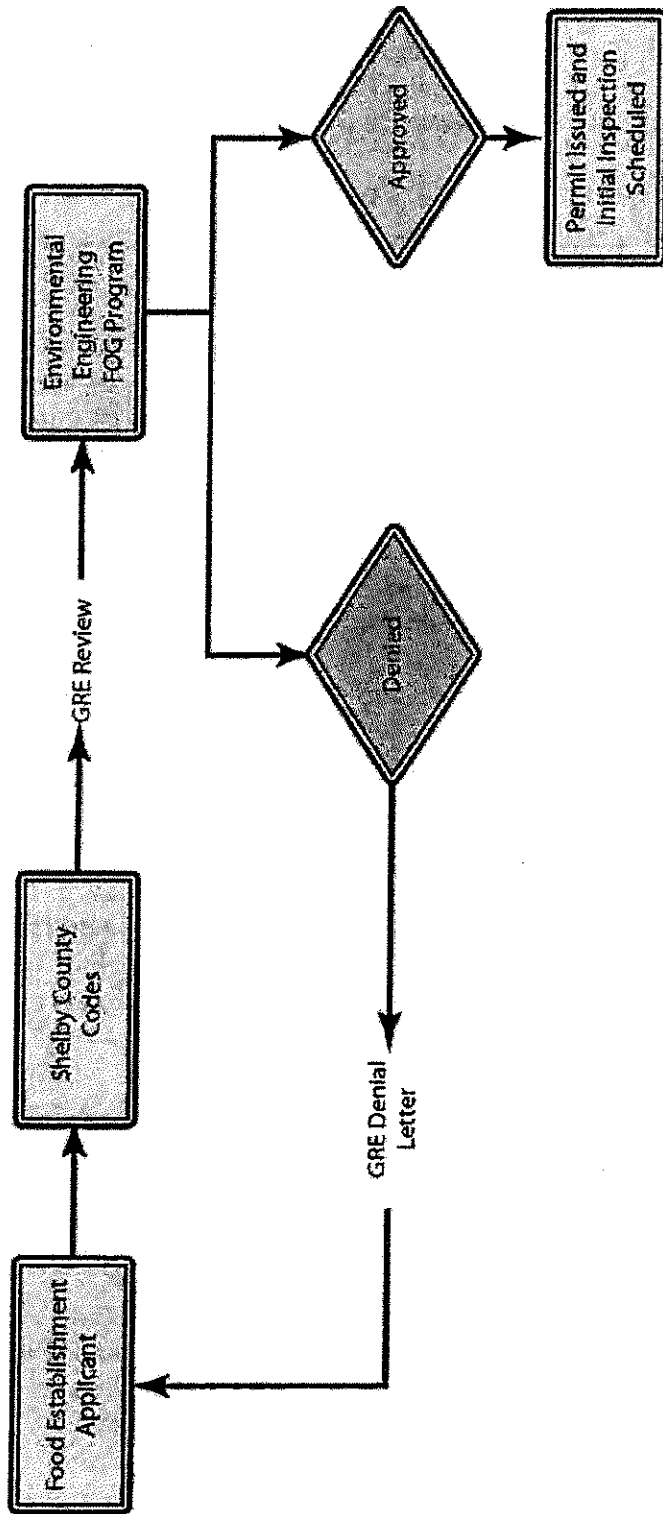


Figure 3-1: GRE Application Process

3.1.3 Permit Requirements

A food establishment with a permitted Wastewater Discharge must comply with the following:

FEWD permit must be kept on file at the local establishment for review by Inspector

GRE Maintenance log and records must be kept on-site for a period of 2 years (an example maintenance log is included in *Appendix F*).

Minimum cleaning frequency of the GRE must be followed by the establishment owner as stated on the permit and must be available for review by inspectors

Food establishments are also responsible for educating employees and training them on the proper disposal of FOG. Restaurants receiving reissued permits will be required, to the extent allowed by law, to maintain documentation of training on site for review during routine FOG inspections.

3.2 GRE Inspection

There are two categories of GRE inspections at food establishments:

- 1) Periodic scheduled inspection (e.g. annual)
- 2) Follow-up inspection due to a violation

Regularly scheduled inspections occur for each permitted establishment. If the food establishment passes this initial inspection, the next regularly scheduled inspection will usually occur approximately a year later. The FOG Program staff has the right to schedule additional inspections if an establishment is located in areas with frequent SSOs resulting from FOG or has recurring violations.

The GRE Inspectors have a checklist for guidance regarding any undefined issues with the GRE. An example of the Inspection Checklist/Notice of Violation form is included in *Appendix G*.

Potential causes of inspection failures include:

Permit unavailable on-site

Maintenance log unavailable or incomplete

Food Establishment Sold, Transferred, or Re-assigned

Inspector denied reasonable access

Violation of location specific permit conditions.

The standard operating procedure (SOP) for GRE inspection is as follows.

3.2.1 Inspection Procedure

Inspectors verify that the food establishment has the required documentation to verify compliance with the following permit requirements:

1. The FEWD permit must be maintained at the FEWD and available for review by the inspector.
2. The GRE maintenance log and manifest records must be maintained at the FEWD for a period of two years and readily available for review.
3. The records should verify cleaning frequency of the GRE complies with the cleaning requirements stipulated in the FEWD permit.

A visual and physical inspection of the GRE will be conducted to determine if compliance with applicable operating standards. Failure to comply with permit requirements may result in enforcement action.

3.2.2 Notice of Violation (NOV)

Unless good cause exists, a first NOV (*Appendix G*) will be issued for failure to comply with the FEWD permit requiring corrective action within seven calendar days of issuance of the NOV. A follow up inspection will be conducted to determine if noted violations have been adequately corrected. An inspection form will be completed for each inspection documenting findings.

3.2.3 Civil Penalty

FEWDs issued a second NOV within a 24 month period may be assessed a civil penalty. A follow up inspection will be conducted to verify compliance. Failure to comply may result in revocation of the FEWD permit as well as further enforcement action.

3.3 Hauled Waste

Upon receipt of a permit to discharge wastewater, a food establishment is provided with a list of the City of Memphis' Permitted Waste Haulers. An example of the list is included in *Appendix H*, but is subject to change. Each of these waste haulers have been approved and permitted by the City of Memphis Public Works Department to haul waste from septic tanks, car wash traps, and portable toilets, as well as GRE waste. The City of Memphis charges the waste haulers per gallon of waste. An example of the permit for waste haulers is included in *Appendix I*, but is subject to change.

It is the responsibility of the food establishment to contract with one of the permitted waste haulers and to maintain the proper GRE cleaning frequency. A Liquid Waste Hauler Manifest form must be completed each time the GRE is pumped. The manifest

Section 3
Food Establishments

must be completed and signed by the food establishment, waste hauler, and the City wastewater plant representative authorizing the disposal by the hauler. A copy of the manifest must be retained by each party. Manifest records are kept by the Industrial Monitoring Department for three years and are accessible by the FOG program. In addition, a daily log is kept at the wastewater plant of all waste haulers authorized for a truck disposal. A copy of the manifest is included in *Appendix J* and the waste log in *Appendix K*.

The City is also considering updating the current manifest system to include the "cradle to grave" concept used by other cities, which puts more responsibility for the ultimate disposal on the owner/generator. This evaluation is on-going and any changes to this manifest system will be documented in the annual update to the FOG plan.

Section 4

Public Education

Other than food establishments, private residents are another large contributor to FOG in the City sewer system. The most effective way to reach private residents is through public education, and this section outlines the programs used.

The intent of public education on FOG is to discourage residents from discarding cooking oils and other FOG in the sewer system. The public is informed that FOG will collect and clog up the sewer pipes, possibly contributing to a future SSO.

4.1 Apartment Complexes

Residential apartment complexes can be pinpointed as contributing a large portion of FOG. The inspectors and other FOG program staff talk with complex managers and encourage them to educate their residences on the effects of FOG in sewer systems.

The City will discuss effective measures with large complexes to determine the best programs. These programs may include distribution of grease lids to all new tenants, or the periodic distribution of flyers to residents. Any programs selected will be included in the annual update to the FOG Plan.

4.2 Can the Grease

Memphis' "Can the Grease" program consists of proactive and retroactive components. Unless good cause exists (e.g. door hangers were recently distributed in the same area) following a SSO event, door hangers will be distributed to residents in proximity of the SSO. The door hangers inform the resident that a recent SSO occurred as a result of FOG in the sewer, and asks the resident to help prevent future SSOs. Attached to the door hanger is a lid designed to fit several sizes of food cans. Instructions inform the user to collect cooking oils or other grease in an empty food can and seal it with the reusable lid. The grease may be hardened in the freezer, then the lid removed and the can discarded. Examples of the door hanger, which is printed in English and Spanish, and lid are included in *Appendix L*.

The proactive measure of the "Can the Grease" program is the distribution of the lids independently from a SSO. The lids are distributed at no charge throughout the city at select grocery stores and at public events and festivals.

4.3 Grease Collection Tote

The City is planning to place a tote at the Shelby County Household Hazardous Waste Center for collection of residential/cooking grease to be dropped off by the public. There will be one tote with volume of approximately 200 gallons that will be emptied by an outside contractor. The tote will be measured for volume collected each time it is emptied and recorded for tracking. Procurement of the contract is underway by the City and is anticipated to be put in service by 2012.

4.4 Other Programs

Memphis distributes the "Fat-Free Sewers" brochures in English and Spanish at multiple local public events. An example of each of these brochures is included in *Appendix M*.

In addition, the FOG program has historically advertised both individually and jointly with the City of Memphis NPDES stormwater program to further the message related to residential dumping of FOG products. Information is also periodically included in the City's monthly wastewater utility bills which are produced and distributed by MLGW. In addition, the City has put up two large billboards and signs at several bus stops about FOG issues that have been rotated through various locations in the City for a period of at least nine (9) months.

Press releases are commonly distributed to area radio stations, television stations, and newspapers for advertising and print. The press release defined FOG and give tips to residents on how to prevent FOG from entering the sewer system. An example of a press release from December 2009 and list of recipients is included in *Appendix N*.

All of the public information distributed has the FOG program phone number to allow residents and businesses to call for any additional questions or information. In addition to these opportunities, the manager of the FOG program is urged to continually look for new methods of public education. The programs used for public education will be reviewed for the annual update to the FOG Plan. Confirmation of these programs, and the dates public education events occur, will be documented in the Annual Report.

Definitions and Acronyms

City	City of Memphis
CMOM	Capacity, Management, Operation and Maintenance
Codes	Memphis and Shelby County Department of Construction Codes
FEWD	Food Establishment Wastewater Discharge
FOG	Fats, Oils, and Grease
GMOM	Grease Management, Operation and Maintenance
GRE	Grease removal equipment
MLGW	Memphis Light, Gas, and Water
NOV	Notice of Violation
SORP	Sewer Overflow Response Plan
SSO	Sanitary Sewer Overflow
SUO	Sewer Use Ordinance
TDEC	Tennessee Department of Environment and Conservation
WWTP	Wastewater Treatment Plant

Appendix A

Memphis City Codes Chapter 33-112: Food Establishment Wastewater

a) Violations and Enforcement Actions.

A violation of any of the foregoing shall result in enforcement actions which may include administrative fines, withdrawal of the privilege to use the City of Memphis wastewater system, and suspension of the existing waste hauler permit and/or prohibition from obtaining a new waste hauler permit.

Any person who willfully and negligently violates permit conditions shall be subject to criminal penalties imposed by the State of Tennessee and/or the United States.

b) Specific Charge for Hauled Waste Transported for Disposal at the Discharge Point Designated by the City of Memphis.

The disposal fee charge for hauled wastewater originated from residential household septic tanks, restaurant grease traps, drive through car washes, portable toilets, and industrial wastewater and sludges generated in the City of Memphis sewer service area shall be a flat rate based upon the volume of the truck (tank capacity). All customers will be charged on a volumetric charge based on rate in cents per gallon of wastewater multiplied by the capacity in gallons of the truck hauling the wastewater. The rate will be reviewed and adjusted if necessary annually by the Division of Public Works. The disposal fee will be determined on a case-by-case basis for industrial wastewaters and sludges from outside the City of Memphis sewer service area.

Sec. 33-112. Food Establishment Wastewater.

33-112-01. Waste Disposal – Construction Plans Approval and Permit Required.

A. Grease Trap Required: All food service establishments discharging wastewater to the City's wastewater facilities shall install, operate, and maintain a sufficiently sized oil and grease, water and solids separator (hereinafter called grease trap) necessary to prevent the accumulation of oil and grease in the sewer collection system. Approval of the City of Memphis, Division of Public Works, shall be required during the construction plans approval process.

B. Design Criteria: All grease traps used in conjunction with food service establishments shall have the capacity of 15 gallons per seat of dining capacity, except that no single grease trap shall be smaller than 750 gallons or larger than 3,000 gallons. In certain cases, multiple grease traps may be utilized. Alternative treatment technologies shall be considered on a case-by-case basis for food establishments that are to be located in an existing building where a large grease trap is not feasible.

C. **General Permit to Discharge:** All food establishments shall obtain a permit to discharge to the wastewater system from the Approving Authority. This permit shall be posted on the premises and renewed as needed.

33-112-02. Subject to Industrial Wastewater Limitations.

Wastewater discharged into public sewers from facilities engaged in preparing food for consumption by the public shall be subject to the limitations set forth in Sections 33-103 and 104 of this ordinance and such other conditions and requirements as are set forth in Section 33-112-03. The Permit for Food Establishment Wastewater Discharge shall be subject to all provisions of this ordinance and all other regulations, user charges, and fees established from time to time by resolution of the Council of the City of Memphis.

33-112-03. Permit for Food Establishment Wastewater Discharge.

The Permit for Food Establishment Wastewater Discharge may require pretreatment of wastewater before discharge, restriction of peak flow discharges, discharge of certain wastewater only to specified sewers of the City, relocation of point of discharge, prohibition of discharge of certain wastewater components, restriction of discharge to certain hours of the day, payment of additional charges to defray increased costs of the City created by the wastewater discharge, and such other conditions as may be required.

33-112-04. Permit Application.

Persons seeking a Food Establishment Wastewater Discharge Permit shall complete and file with the Approving Authority, an application in the form prescribed by the Approving Authority. The applicant may be required to submit, in units and terms appropriate for evaluation, the following information:

Name and address of applicant.

Volume of wastewater to be discharged.

Time of daily food preparation operations.

Description of food preparation, dining room capacity by seats, number of employees, and size of kitchen.

Any other information as may be deemed by the Approving Authority to be necessary to evaluate the permit application.

The Approving Authority will evaluate the data furnished by the applicant and may require additional information. After evaluation and acceptance of the data furnished, an on-site inspection of the waste discharge system, treatment systems or other systems relating to the waste discharge may be required. The Approving Authority may then issue a Food Establishment Wastewater Discharge Permit subject to the terms and conditions provided herein.

33-112-05. Duration of Permits.

Permits shall be issued for a specified time period, not to exceed five (5) years. A permit may be issued for a period less than a year or may be stated to expire on a specific date. If the permittee is not notified by the City thirty (30) days prior to the expiration of the permit, the permit shall be extended one additional year. The terms and conditions of the permit may be subject to modification and change by the City during the life of the permit as limitations or requirements as identified in Sections 33-103 and 104 are modified and changed. The permittee shall be informed of any proposed changes in his permit at least thirty (30) days prior to the effective date of change. Any changes or new conditions in the permit shall include a reasonable time schedule for compliance.

33-112-06. Transfer of Permit.

Food Establishment Wastewater Discharge Permits shall be issued only for specific use for a specific operation. Any sale, lease, transfer, or assignment of the premises or operation for which the permit was issued shall require a new permit to be issued. Any new or changed conditions of operation shall require a new permit to be issued.

33-112-07. Revocation of Food Establishment Wastewater Permit.

The Approving Authority may revoke the permit of any permittee who is found to be in violation of this ordinance or who:

Fails to install grease pretreatment devices as required by permit;
Fails to fulfill reporting requirements or pretreatment maintenance as required by permit;
Refuses reasonable access to the permittee's premise for the purpose of inspection or monitoring; or
Violates conditions of the permit.

33-112-08. Grease Pretreatment Required.

Permittee shall make wastewater acceptable under the limitations established herein before discharging to any public sewer. All permittees shall be required to install an approved type grease pretreatment device in the waste line leading from the food preparation area, or from sinks, drains, appliances, and other fixtures or equipment used in food preparation or cleanup where grease may be introduced into the sewerage system. Such grease pretreatment devices shall be installed to remove grease from wastewater and shall be maintained in efficient operating conditions by periodic removal of the accumulated grease. No such collected grease shall be introduced into any drainage piping or public sewer.

Each permittee shall also be required to provide a collection drum or container for the purpose of physically segregating oils, greases, and greasy solids. Permittees shall

establish procedures for personnel to practice maximum segregation of oils, greases, and greasy solids to the collection drum or container prior to washing and other water cleaning, which goes into sewers. The permittee shall be responsible for the proper removal and disposal by appropriate means of the material captured from either grease pretreatment devices on wastewater lines or the collection drum for segregating oils, grease, and greasy solids.

33-112-09. Maintenance Reports.

The Approving Authority shall require the permittee to keep records of grease pretreatment device cleaning, maintenance and grease removal on site. The Approving Authority may require the permittee to provide results of periodic measurements of its discharge, which is to include chemical analysis of oil and grease content. Permittees shall allow the City or its representative ready access at all reasonable times to all parts of the premises for purposes of sampling and inspections.

33-112-10. Penalty for Violation and Civil Liability.

Any person(s) discharging wastewater in violation of the Food Establishment Wastewater Discharge Permit is subject to fines, penalties, cost recovery, injunction, termination of sewer service, permit revocation, and/or such other remedies as are available to the Approving Authority under section 33-173 of the Sewer Use Ordinance.

Sec. 33-113—33-125 Reserved

Appendix B

Quarterly Report

City of Memphis

TENNESSEE



Division of Public Works, Environmental
Food Establishment Wastewater Discharge Program
2303 North Second Street, Tennessee 38127-7500
Telephone: (901) 576-4301 Fax: (901) 636-4325

July 12, 2010

Mr. Phillip M. Simmons, P.E.
State of Tennessee, Department of Environment and Conservation
Division of Water Pollution Control
Municipal Facilities Section
401 Church Street
L&C Annex, Sixth Floor
Nashville, TN 37243-1534

RE: State Requirement #16 Reporting Requirement for CMOM, Second Quarter 2010

Mr. Simmons:

In compliance with the reporting requirements set forth by the State of Tennessee, the following summary is submitted. This summarizes the activities of the City of Memphis Food Establishment Wastewater Discharge Program for the period of April 1, 2010 through June 30, 2010. Any facility listed twice has multiple grease traps.

Currently there are 3188 total food establishments in our database. At the present time, 106 of these are closed (out of business), leaving 3082 active establishments.

- Total Facilities inspected.....538
- Total New Facilities added.....23
- Total NOV's issued.....24
- Total Civil Penalties issued.....1
- Total Permits issued.....35
- Total Active Facilities Permitted as of June 30, 2010 2936

Any questions may be directed to me at 901-636-4301.

Sincerely,

James Greenlee
Environmental Engineer

c. Paul Patterson
Donald Hudgins
Terry Templeton

Second Quarterly Report 2010 (April 1, 2010 through June 30, 2010)

Total Inspections Completed During Quarter

Inspection Date	Facility Name	Address	Zip Code	Map Book	GRE
4 /1 /2010	Black Diamond	153 Beale Street	38103	34 - D	10 Pound
4 /1 /2010	Fedex Forum - Flip Sid	191 Beale Street	38103	34 - D	40 Pound
4 /1 /2010	Fedex Forum - High No	191 Beale Street	38103	34 - D	40 Pound
4 /1 /2010	Fedex Forum - In Seat	191 Beale Street	38103	34 - D	40 Pound
4 /1 /2010	Fedex Forum - Lexus L	191 Beale Street	38103	34 - D	0
4 /1 /2010	Fedex Forum - Lucille's	191 Beale Street	38103	34 - D	40 Pound
4 /1 /2010	Fedex Forum - Media P	191 Beale Street	38103	34 - D	30 Pound
4 /1 /2010	Fedex Forum - Metrodo	191 Beale Street	38103	34 - D	40 Pound
4 /1 /2010	Fedex Forum - Old No.	191 Beale Street	38103	34 - D	0
4 /1 /2010	Hard Rock Cafe	315 Beale Street	38103	35 - A	1000 Gallons
4 /1 /2010	Omni-New Daisy	330 Beale Street	38103	35 - A	0
4 /1 /2010	Peoples Billiards Club	323 Beale Street	38103	34 - D	0
4 /1 /2010	Super Z Market	4215 Hacks Cross Road	38125	150-P	100 Pound
4 /1 /2010	Wet Willie's	209 Beale Street	38103	35 - A	200 Gallons
4 /2 /2010	Fedex Forum - 4/4 Grill	191 Beale Street	38103	34 - D	40 Pound
4 /2 /2010	Fedex Forum - Beale St	191 Beale Street	38103	34 - D	30 Pound

Friday, July 09, 2010

Inspection Date	Facility Name	Address	Zip Code	Map Book	QRE
4 / 2 /2010	Fedex Forum - Opus Ki	191 Beale Street	38103	34 - D	0
4 / 2 /2010	Fedex Forum - Re-Mix	191 Beale Street	38103	34 - D	40 Pound
4 / 2 /2010	Fedex Forum - Rock A	191 Beale Street	38103	34 - D	40 Pound
4 / 2 /2010	Fedex Forum - Up Tern	191 Beale Street	38103	34 - D	40 Pound
4 / 6 /2010	Burger King	1027 Union Avenue	38104	35 - C	1000 Gallons
4 / 6 /2010	Coyote Ugly	326 Beale Street	38103	34 - D	50 Pound
4 / 6 /2010	Fusion	380 Beale Street	38103	35 - A	75 Pound
4 / 6 /2010	Hunan Palace Pacifica	9915 Highway 64	38018	158 - C	1000 Gallons
4 / 6 /2010	Hunt Phelan	533 Beale Street	38103	35 - B	30 Pound
4 / 6 /2010	Hunt Phelan	533 Beale Street	38103	35 - B	50 Pound
4 / 6 /2010	Low Cash Deli	608 E. Trigg Avenue	38106	42-F	100 Pound
4 / 6 /2010	Maggie Moo's	150 Peabody Place	38103	34 - D	0
4 / 6 /2010	MIFA-Venson Center	439 Beale Street	38103	35 - A	50 Pound
4 / 6 /2010	Orchid Club, The	642 Beale Street	38103	35 - B	74 Pound
4 / 7 /2010	Alcenia's Desserts and	317 N. Main Street	38103	28 - E	10 Pound
4 / 7 /2010	BP - Fill-n-Go	2864 Thomas	38127	13-C	50 Pound
4 / 7 /2010	Memphis Convention C	255 Main Street	38103	28 - J	1000 Gallons
4 / 7 /2010	Precious Cargo	381 Main Street	38103	28 - J	0
4 / 7 /2010	Subway	464 Main Street	38103	28 - E	75 Pound
4 / 7 /2010	TJ Mulligans (Pinch)	362 Main Street	38103	28 - E	200 Gallons

Inspection Date	Facility Name	Address	Zip Code	Map Book	GRE
4 / 7 / 2010	Westy's	346 Main Street	38103	28 - E	25 Pound
4 / 8 / 2010	Aramark (Federal Rese	200 N. Main Street	38103	28-J	25 Pound
4 / 8 / 2010	Leonard's BBQ Buffet	103 N. Main Street	38103	27 - M	50 Pound
4 / 8 / 2010	Memphis Marriott/Magn	250 N. Main Street	38103	28 - J	4200 Gallons
4 / 8 / 2010	Royal Jasmine Chinese	125 Main Street	38103	27 - M	100 Pound
4 / 8 / 2010	Sidi Bou Cafe	111 Main Street	38103	27 - M	10 Pound
4 / 9 / 2010	Cafe Napoleon	86 N. Main Street	38103	27 - R	50 Pound
4 / 9 / 2010	Easy Way	80 Main Street	38103	27 - R	250 Gallons
4 / 9 / 2010	Lam's	100 N. Main Street	38103	27 - M	0
4 / 9 / 2010	Rubins's Diner	208 Brooks Road	38109	62 - F	100 Pound
4 / 9 / 2010	Sam's Hamburgers and	94 Main Street	38103	27 - R	25 Pound
4 / 9 / 2010	Smooth Moves Juice B	94 Main Street	38103	27 - R	40 Pound
4 / 9 / 2010	Subway	85 Main Street	38103	27 - R	50 Pound
4 / 12 / 2010	Blue Plate Café	113 S. Court Square	38103	27 - R	50 Pound
4 / 12 / 2010	Blue Plate Café	113 S. Court Square	38103	27 - R	400 Gallons
4 / 12 / 2010	Court House Deli	22 S. Main Street	38103	27 - R	50 Pound
4 / 12 / 2010	Jerusalem Market	4794 Summer Avenue	38122	32 - O	80 Gallons
4 / 12 / 2010	NYC Deli	40 Main Street	38103	28 - J	40 Pound
4 / 12 / 2010	Peanut Shoppe, The	24 Main Street	38103	27 - R	0
4 / 12 / 2010	Sam's Hamburgers and	3 S. Main Street	38103	27 - R	15 Pound

Friday, July 09, 2010

<u>Inspection Date</u>	<u>Facility Name</u>	<u>Address</u>	<u>Zip Code</u>	<u>Map Book</u>	<u>GRE</u>
4 /12/2010	Stella's Basement	39 Main Street	38103	27 - R	40 Pound
4 /12/2010	T & J Sundry	1770 Farrington	38109	41 - O	30 Pound
4 /12/2010	Vietnamese Bistro	153 N. Cleveland	38104	36 - A	200 Gallons
4 /13/2010	Circa by John Bragg	119 S. Main Street	38103	34 - D	50 Pound
4 /13/2010	Majestic Grille	145 Main Street	38103	34 - D	1000 Gallons
4 /13/2010	On The River Seafood	51 Main Street	38103	27 - R	25 Pound
4 /13/2010	Orpheum Theatre	203 Main Street	38103	34 - D	0
4 /13/2010	Sauces Restaurant	95 Main Street	38103	27 - R	100 Gallons
4 /13/2010	Unisource Business Se	220 Main Street	38103	34 - D	20 Pound
4 /13/2010	Wok & Roll	3659 N. Watkins Road	38127	8-B	750 Pound
4 /14/2010	Picos Mexican Grill	2235 Covington Pike	38134	24 - C	30 Pound
4 /15/2010	Exxon	1369 Sycamore View Road	38134	33 - C	200 Gallons
4 /15/2010	Fairfield Inn	6010 Macon Cove	38134	33 - C	0
4 /15/2010	Genghis Grill	2362 N. Germantown Pkwy.	38016	136 - D	750 Gallons
4 /15/2010	Goodtime Charlie's	1664 Sycamore View Road	38134	25 - N	0
4 /16/2010	Big Hong Kong	3312 Jackson Avenue	38122	23 - N	750 Gallons
4 /16/2010	County Line	2838 Coleman Road	38128	17 - E	100 Pound
4 /16/2010	Kinder Care	4984 Raleigh LaGrange Rd.	38134	17 - L	0
4 /16/2010	PJ's Sport Bar	5070 Raleigh LaGrange Rd.	38134	17 - P	0
4 /19/2010	Arcade, The	540 S. Main Street	38103	34 - M	20 Pound

Friday, July 09, 2010

Inspection Date	Facility Name	Address	Zip Code	Map Book	GRE
4 /19/2010	Bluff City Coffee	505 Main Street	38103	34 - M	40 Pound
4 /19/2010	Café Soul	492 S. Main Street	38103	34 - H	30 Pound
4 /19/2010	El Padrino	3650 Ridgeway Road	38115	77 - H	250 Pound
4 /19/2010	Pearl's Oyster House	299 Main Street	38103	34 - D	80 Pound
4 /19/2010	Scales Café	2801 Kirby Road	38115	146 - E	100 Pound
4 /19/2010	Spindini Restaurant	383 Main Street	38103	34 - H	70 Pound
4 /19/2010	Sycamore View Church	1910 Sycamore View Road	38134	25 - K	0
4 /19/2010	Tropical Nut & Fruit	5222 Pleasant View Rd	38134	24 - M	0
4 /20/2010	Blue Fin	135 S. Main Street	38103	34 - D	20 Pound
4 /20/2010	Cafe Napoleon	86 N. Main Street	38103	27 - R	50 Pound
4 /20/2010	Memphis Marriott/Magn	250 N. Main Street	38103	28 - J	4200 Gallons
4 /20/2010	Starbucks Coffee	2698 Germantown Parkway	38133	134 - G	20 Gallons
4 /20/2010	Wangs Bistro	113 Main Street	38103	34 - D	750 Gallons
4 /20/2010	Westy's	346 Main Street	38103	28 - E	25 Pound
4 /21/2010	B.B. King's Blues Club	139 Beale Street	38103	34 - D	500 Gallons
4 /21/2010	Center for Southern Fol	119 S. Main Street	38103	34 - D	30 Pound
4 /21/2010	Heavenly Hoagie	1428 Union Avenue	38112	36 - E	20 Gallons
4 /21/2010	Jubilee Express	6105 Summer Avenue	38120	25 - H	
4 /21/2010	Memphis Coffee Excha	152 Madison Avenue	38103	28 - N	0
4 /21/2010	Onix	412 Main Street	38103	34 - H	40 Pound

Friday, July 09, 2010

Inspection Date	Facility Name	Address	Zip Code	Map Book	ERE
4 /21/2010	Rum Boogie Cafe	182 Beale Street	38103	34 - D	500 Gallons
4 /21/2010	Steak & Shake	8477 Highway 64	38133	134 - H	300 Gallons
4 /21/2010	Subway	2760 Germantown Parkway	38133	134 - M	50 Pound
4 /21/2010	T & J Sundry	1770 Farrington	38109	41 - O	30 Pound
4 /21/2010	TGI Friday's	8325 Highway 64	38133	134 - H	1200 Gallons
4 /22/2010	Bharat International Ma	3675 Southwind Park Cove	38125	151 - G	100 Pound
4 /22/2010	Cheese Cake Corner, T	113 G. E. Patterson	38103	34 - G	0
4 /22/2010	El Rancherito	5070 Raleigh LaGrange Rd.	38134	17 - P	0
4 /22/2010	Green Beetle	325 S. Main Street	38103	34 - H	10 Pound
4 /22/2010	Makeda's Homemade	5729 Raleigh LaGrange Rd.	38134	25 - F	20 Pound
4 /22/2010	Mesquite Chop Shop	88 Union Avenue	38103	27 - R	10 Gallons
4 /22/2010	Peabody - Capriccio's	149 Union Avenue	38103	27 - R	0 Pound
4 /22/2010	Peabody, The (Chez P	149 Union Avenue	38103	27 - R	0
4 /22/2010	Peabody, The (main kit	149 Union Avenue	38103	27 - R	800 Gallons
4 /22/2010	Peabody, The (pastry s	149 Union Avenue	38103	27 - R	0
4 /22/2010	Rumba Room	303 Main Street	38103		40 Pound
4 /22/2010	STCC (Gourmet Servic	5983 Macon Cove	38134	33 - C	700 Gallons
4 /22/2010	Wendy's #28	6156 Macon Road	38134	33 - D	120 Gallons
4 /22/2010	Xamdi's Place	5145 Raleigh LaGrange Rd.	38134	17 - R	50 Pound
4 /23/2010	Daylight Donuts	5735 Raleigh LaGrange Rd.	38134	25 - F	60 Pound

Friday, July 08, 2010

Inspection Date	Facility Name	Address	Zip Code	Map Book	GRE
4 /23/2010	Double Tree Hotel/TGI	185 Union Avenue	38103	27 - R	1000 Gallons
4 /23/2010	El Taquito	5721 Raleigh LaGrange Rd.	38134	25 - F	30 Pound
4 /23/2010	Fifteen Floor Kitchen	160 Union Avenue	38103	27 - R	50 Pound
4 /23/2010	Harry's Detour South M	106 Bishop G.E. Patterson	38103	34 - H	10 Gallons
4 /23/2010	Holiday Inn Downtown	160 Union Avenue	38103	27 - R	30 Gallons
4 /23/2010	Holiday Inn Downtown	160 Union Avenue	38103	27 - R	15 Gallons
4 /23/2010	LaQuinta Inn	6069 Macon Cove	38134	33-C	0
4 /23/2010	Minit Stop	1779 Bartlett	38134	25 - N	50 Pound
4 /23/2010	Russwood Bar & Grill	160 Union Avenue	38103	27 - R	20 Pound
4 /23/2010	Russwood Bar & Grill	160 Union Avenue	38103	27 - R	50 Pound
4 /23/2010	Sekisui Downtown Rest	160 Union Avenue	38103	27 - R	
4 /23/2010	TGI Fridays	149 Union Avenue	38103	27 - R	3000 Gallons
4 /26/2010	BP	695 Union Avenue	38103	35 - B	40 Pound
4 /26/2010	Denny's	164 Union Avenue	38103	27 - R	200 Gallons
4 /26/2010	Dinstuhl's	5280 Pleasant View Rd	38134	24 - M	500 Gallons
4 /26/2010	Domino's	686 Union Avenue	38103	35 - B	25 Pound
4 /26/2010	Drury Inn	1556 Sycamore View Road	38134	25 - P	40 Pound
4 /26/2010	GLI Food/Greyhound	203 Union Avenue	38103	35 - A	200 Gallons
4 /26/2010	KFC Y063226	5849 Summer Avenue	38134	25 - O	1000 Gallons
4 /26/2010	McDonalds	905 Union Avenue	38103	35 - C	500 Gallons

Friday, July 09, 2010

Inspection Date	Facility Name	Address	Zip Code	Mag Book	CRF
4 /26/2010	Quetzal Coffee Shop / I	664 Union Avenue	38103	35 - B	30 Gallons
4 /26/2010	Rubins's Diner	208 Brooks Road	38109	62 - F	100 Pound
4 /26/2010	Stop 345	345 Madison Avenue	38103	28 - N	10 Pound
4 /26/2010	Subway	495 Union Avenue	38103	35 - A	50 Pound
4 /26/2010	T & J Sundry	1770 Farrington	38109	41 - O	30 Pound
4 /26/2010	Tasty Sub	911 Union Avenue	38103	35 - C	300 Gallons
4 /26/2010	Trafalgar Village Baptist	6161 Summer Avenue	38134	25 - H	350 Gallons
4 /27/2010	First Tennessee Headq	165 Madison Avenue	38103	28 - N	30 Pound
4 /27/2010	King of Wings	143 Madison Avenue	38103	28 - N	20 Pound
4 /27/2010	Madison Ave. Café	143 Madison Avenue	38103	28 - N	10 Pound
4 /27/2010	Madison Hotel, The	79 Madison Avenue	38103	28 - N	300 Gallons
4 /27/2010	Smitty's Place	149 Madison Avenue	38103	27 - R	20 Pound
4 /28/2010	Bluff City Bayou	694 Madison Avenue	38103	35 - B	30 Pound
4 /28/2010	Crave		38103	28 - O	50 Pound
4 /28/2010	Crave Catering	662 Madison Avenue	38103	35 - B	50 Pound
4 /28/2010	Euphoria	704 Madison Avenue	38103	35 - B	50 Pound
4 /28/2010	Lenny's Sub Shop	22 S. Front St.	38103	27 - R	10 Pound
4 /28/2010	Madison Cafe	920 Madison Avenue	38103	35 - C	100 Pound
4 /28/2010	Mondo Subs	920 Madison Avenue	38103	35 - C	100 Pound
4 /28/2010	Tucker's	920 Madison Avenue	38103	35 - C	50 Pound

<u>Inspection Date</u>	<u>Facility Name</u>	<u>Address</u>	<u>Zip Code</u>	<u>Map Book</u>	<u>RFI</u>
4/28/2010	University of Tennessee	800 Madison Avenue	38103	35 - C	1000 Gallons
4/29/2010	Butcher Shop, The	101 S. Front St.	38103	27 - R	50 Pound
4/29/2010	Cayenne Moon	94 S. Front St.	38103	27 - R	40 Pound
4/29/2010	Front St. Deli	77 S. Front St.	38103	27 - R	10 Pound
4/29/2010	Grade Pizza	60 S. Front St.	38103	27-R	50 Pound
4/29/2010	Kroger	2130 Exeter	38134	59 - F	1500 Gallons
4/30/2010	Blue Monkey	513 S. Front St.	38103	34-G	50 Pound
4/30/2010	Blue Monkey	513 S. Front St.	38103	34-G	200 Gallons
4/30/2010	Extreme Events Caterin	280 Mud Island	38103	20 - A	500 Gallons
4/30/2010	Fairground's Concessio	400 S. Hollywood	38104	44 - A	750 Gallons
4/30/2010	Gulf Port Grill, The	280 N. Mud Island Drive	38103	27 - M	1000 Gallons
4/30/2010	Gus' World Famous Ch	310 S. Front St.	38103	34 - G	10 Pound
4/30/2010	Memphis Queen Line	45 Riverside Dr.	38103	27 - R	0
4/30/2010	River Center Deli, The	280 N. Mud Island Drive	38103	27 - M	15 Pound
4/30/2010	River Terrace Restaura	282 N. Mud Island Drive	38103	27 - M	600 Gallons
5/3/2010	Currents	50 Harbor Town	38103	27 - D	750 Gallons
5/3/2010	Dominos Pizza	5784 Raleigh LaGrange Rd.	38134	25 - F	20 Pound
5/3/2010	Harbor Town Coffee	111 Harbor Town Square	38103		50 Pound
5/3/2010	January Services	5550 Pleasant View Rd	38134	25 - J	50 Pound
5/3/2010	Miss Cordelia's	737 Harbor Bend	38103	202 - R	250 Gallons

Friday, July 09, 2010

Page 9 of 28

Inspection Date	Facility Name	Address	Zip Code	Map Book	GRF
5 /3 /2010	Movie & Pizza Co.	110 Harbor Town Square	38103	202 - R	30 Pound
5 /3 /2010	Sam's Donuts	2235 Whitten Road	38134	26 - B	50 Pound
5 /3 /2010	Tug's	51 Harbor Town	38103	27 - D	750 Gallons
5 /3 /2010	Variety Club	1648 Sycamore View Road	38134	25 - P	25 Pound
5 /4 /2010	Calvary Episcopal Chur	102 N. Second Street	38103	28 - N	200 Gallons
5 /4 /2010	Donnie's Corner Market	2098 Covington Pike	38134	24 - C	20 Pound
5 /4 /2010	Elliot's Restaurant	16 S. Second St.	38103	27 - R	5 Pound
5 /4 /2010	First Methodist Church	204 N. Second Street	38103	28 - J	250 Gallons
5 /4 /2010	Lucky 7 Food & Fuel	6224 Macon Road	38134	33 - D	150 Gallons
5 /4 /2010	Mapco/Blimpie Express	6215 Macon Road	38134	33 - D	300 Gallons
5 /4 /2010	Restaurant Iris	2146 Monroe Avenue	38104	36 - H	100 Pound
5 /4 /2010	Sauces Restaurant	95 Main Street	38103	27 - R	100 Gallons
5 /4 /2010	Shelby Market	6882 Macon Road	38134	138 - B	300 Gallons
5 /4 /2010	Side St. Grill	35 Florence	38104	36 - H	10 Pound
5 /4 /2010	Side St. Grill	35 Florence	38104	36 - H	750 Gallons
5 /4 /2010	TCBY	1708 Union Avenue	38104	36-F	750 Gallons
5 /5 /2010	Asian Palace	5266 Summer Avenue	38122	32 - M	1250 Gallons
5 /5 /2010	Automatic Slim's	83 S. Second St.	38103	27 - R	200 Gallons
5 /5 /2010	Café 61	85 S. Second St.	38103	27 - R	70 Pound
5 /5 /2010	East End Grill	7547 Highway 64	38134	134 - E	250 Gallons

Friday, July 09, 2010

Inspection Date	Facility Name	Address	Zip Code	Map Book	GRF
5 /5 /2010	Flying Fish	105 S. Second St.	38103	34 - D	100 Pound
5 /5 /2010	Huey's	77 S. Second St.	38103	27 - R	30 Pound
5 /5 /2010	Krispy Kreme	4244 Elvis Presley Blvd.	38116	72 - P	500 Gallons
5 /5 /2010	Memphis Healthcare &	1150 Dovecrest	38134	33 - H	500 Gallons
5 /5 /2010	Pancho's	87 S. Second St.	38103	27 - R	20 Pound
5 /5 /2010	Rendezvous, The	52 S. Second St.	38103	27 - R	200 Gallons
5 /5 /2010	Rendezvous, The	52 S. Second St.	38103	27 - R	5 Pound
5 /5 /2010	Second Street Shopper	99 S. Second St.	38103	27 - R	0
5 /5 /2010	VGM - Charley Biggs	6195 Macon Road	38134		50 Pound
5 /5 /2010	Wyndham Hotel	300 N. Second Street	38103	28 - J	500 Gallons
5 /6 /2010	Asian Palace	5266 Summer Avenue	38122	32 - M	1250 Gallons
5 /6 /2010	Kinder Care	5740 Pleasant View Rd	38134	25 - K	30 Pound
5 /6 /2010	Quality Inn	6068 Macon Cove	38134	33 - C	0
5 /7 /2010	Autozone Park/Memphi	175 Toyota Plaza	38103	27 - R	2000 Gallons
5 /7 /2010	Canteen Catering	1965 Shelby Oaks Drive	38134	25 - M	150 Gallons
5 /7 /2010	Chris' Corner	2886 Walnut Grove Road	38111	36 - G	100 Pound
5 /7 /2010	Draper's Catering of Me	6110 Macon Road	38134	33 - C	400 Gallons
5 /7 /2010	Draper's Catering of Me	6110 Macon Road	38134	33 - C	1500 Gallons
5 /7 /2010	George's Coffee Shop	50 N. Third Street	38103	27 - R	10 Gallons
5 /7 /2010	Local, The	2800 Whitten Road	38134	19 - F	10 Pound

Inspection Date	Facility Name	Address	Zip Code	Map Book	GRE
5 /7 /2010	Memphis Sounds Loun	22 N. Third Street	38103		30 Pound
5 /7 /2010	Mi Tierra Columbia Res	5883 Summer Avenue	38134	25 - L	750 Gallons
5 /7 /2010	Putt Putt Golf & Games	5484 Summer Avenue	38134	33 - E	500 Gallons
5 /7 /2010	Sleep Inn	2855 Old Austin Peay Highw	38134	16 - H	0
5 /10/2010	BK's Bites	200 Jefferson Avenue	38103	27 - R	0
5 /10/2010	China Restaurant	150 Jefferson Avenue	38103	28 - N	200 Gallons
5 /10/2010	Dawg Gone Good Deli	461 E. Shelby Drive	38109	81 - J	100 Pound
5 /10/2010	Dixie Meat	239 Jefferson Avenue	38103	28 - O	250 Gallons
5 /10/2010	Jalisco's Restaurant	6343 Summer Avenue	38134	25 - D	30 Pound
5 /10/2010	MCS Grizzlies Academ	168 Jefferson Avenue	38103	28 - N	200 Gallons
5 /10/2010	MCS - Shelby Oaks ES	6053 Summer Avenue	38134	25 - G	750 Gallons
5 /10/2010	Pier Restaurant, The	100 Wagner Place	38103	35 - C	250 Gallons
5 /10/2010	Simply for Me	151 Jefferson Avenue	38103	28 - N	80 Pound
5 /10/2010	Simply for Me	151 Jefferson Avenue	38103	28 - N	250 Gallons
5 /10/2010	Yogurille	5030 Poplar Avenue	38117	46 - G	100 Pound
5 /11/2010	Bardog Tavern	73 Monroe Avenue	38103	27-R	70 Pound
5 /11/2010	Bogie's Deli Downtown	80 Monroe Avenue	38103	27 - R	40 Pound
5 /11/2010	Felecia Suzanne's	80 Monroe Avenue	38103	27 - R	40 Pound
5 /11/2010	Holiday Inn Downtown	160 Union Avenue	38103	27 - R	15 Gallons
5 /11/2010	Holiday Inn Downtown	160 Union Avenue	38103	27 - R	30 Gallons

Friday, July 09, 2010

Inspection Date	Facility Name	Address	Zip Code	Map Book	GRE
5/11/2010	Little Tea Shop, The	69 Monroe Avenue	38103	28 - N	200 Gallons
5/11/2010	McDonalds	1610 Sycamore View Road	38134	25 - P	250 Gallons
5/11/2010	Playita Mexicana	6194 Macon Road	38134	33 - D	200 Gallons
5/11/2010	Subway	6188 Macon Road	38134	33 - D	50 Pound
5/11/2010	Waffle House 317	1550 Sycamore View Road	38134	25 - P	150 Gallons
5/11/2010	Zoe's	80 Monroe Avenue	38103	27 - R	75 Pound
5/12/2010	Coiffetta's Italian Restau	2850 Appling Road	38134	134 - E	500 Gallons
5/12/2010	Ramada Inn	1585 Sycamore View Road	38134	25 - P	0
5/12/2010	Subway	6415 Summer Avenue	38134	26 - A	50 Pound
5/12/2010	Tug's	51 Harbor Town	38103	27 - D	750 Gallons
5/13/2010	Beignet Cafe	124 G. E. Patterson	38103		100 Pound
5/13/2010	Bon Ton Restaurant	150 Monroe Avenue	38103	27 - R	875 Gallons
5/13/2010	Cadre	149 Monroe Avenue	38103	27 - R	74 Pound
5/13/2010	Lolo's Table	126 Monroe Avenue	38103	27 - R	40 Pound
5/13/2010	McEwen's on Monroe	122 Monroe Avenue	38103	28 - N	30 Pound
5/13/2010	McEwen's on Monroe	122 Monroe Avenue	38103	28 - N	20 Pound
5/13/2010	Partners	5070 Raleigh LaGrange Rd.	38134	17 - P	350 Gallons
5/13/2010	Pizza Hut	6168 Macon Road	38134	33 - D	40 Gallons
5/13/2010	Starbucks Coffee	1615 Sycamore View Road	38134	25 - N	100 Pound
5/13/2010	Westy's	346 Main Street	38103	28 - E	25 Pound

Friday, July 09, 2010

Inspection Date	Facility Name	Address	Zip Code	Map Book	GRE
5 /14/2010	Barakats Market	5782 Raleigh LaGrange Rd.	38134	25 - F	50 Pound
5 /14/2010	Court Manor Nursing C	1414 Court Avenue	38103	36 - A	750 Gallons
5 /14/2010	Eatery, The	201 Poplar Avenue	38103	28 - O	20 Pound
5 /14/2010	First Presbyterian - FD	166 Poplar Avenue	38103	28 - J	20 Pound
5 /14/2010	Flash Back B&G	5707 Raleigh LaGrange Rd.	38134	25 - F	250 Gallons
5 /14/2010	Kudzu's Lounge	603 Monroe Avenue	38103	35 - B	25 Pound
5 /14/2010	Lenny's Sub Shop #61	1664 Sycamore View Road	38134	25 - P	30 Pound
5 /14/2010	Memphis Cook Conven	74 Poplar Avenue	38103	28 - J	100 Gallons
5 /14/2010	Memphis Cook Conven	74 Poplar Avenue	38103	28 - J	700 Gallons
5 /14/2010	Ruby Tuesday	1653 Sycamore View Road	38134	25 - P	500 Gallons
5 /14/2010	Simply Fabulous	300 Court Avenue	38103	28 - O	200 Gallons
5 /17/2010	Friendly Quick Stop	5510 Stage Road	38134	18 - E	15 Pound
5 /17/2010	M & A Quick Stop Proje	569 Poplar Avenue	38103	28 - O	75 Pound
5 /17/2010	Mapco/Blimpie Express	2214 Whitten Road	38134	26 - B	0
5 /17/2010	Memphis Union Mission	383 Poplar Avenue	38103	28 - O	200 Gallons
5 /17/2010	Poplar Cafe	200 Poplar Avenue	38103	28 - J	30 Pound
5 /17/2010	Subway	308 Poplar Avenue	38103	28 - O	50 Pound
5 /17/2010	Tops BBQ	6130 Macon Road	38134	33 - D	700 Gallons
5 /17/2010	Yum's	795 Poplar Avenue	38103	28 - P	20 Pound
5 /18/2010	Café Loraine	450 Mulberry	38103	34 - H	0

Inspection Date	Facility Name	Address	Zip Code	Map Book	CRE
5/18/2010	Church's Fried Chicken	925 Poplar Avenue	38103	28 - R	200 Gallons
5/18/2010	D'Bo's	5727 Raleigh LaGrange Rd.	38134	25 - F	30 Pound
5/18/2010	Girls Inc.	686 N. Seventh Avenue	38103	28 - B	40 Pound
5/18/2010	High Point Café	111 Jackson Avenue	38103	28 - E	15 Gallons
5/18/2010	Marmalade Restaurant	153 G. E. Patterson	38103	34 - G	10 Gallons
5/18/2010	MCS - Downtown Scho	10 S. Fourth St.	38103	28 - N	300 Gallons
5/18/2010	Memphis Downtown Di	116 S. Fourth St.	38103	27 - R	200 Gallons
5/18/2010	Memphis Plaza	6101 Shelby Oaks Drive	38134	25 - R	1100 Gallons
5/18/2010	Memphis Plaza	6101 Shelby Oaks Drive	38134	25 - R	250 Gallons
5/18/2010	Memphis Plaza	6101 Shelby Oaks Drive	38134	25 - R	150 Gallons
5/18/2010	Pfizer Cafeteria	1855 Shelby Oaks Drive	38134	25 - M	30 Pound
5/19/2010	Da Burrito Factory	2477 Poplar Avenue	38112	37 - A	100 Pound
5/19/2010	Gibson Showcase Loun	145 Lt. George W. Lee	38103	34 - D	200 Gallons
5/19/2010	Ground Zero	158 George W. Lee	38103	34 - D	1000 Gallons
5/19/2010	Jim's Place East	5560 Shelby Oaks Drive	38134	33 - A	100 Gallons
5/19/2010	Lo Yo Yogurt	559 Erin Dr.	38117	46 - G	100 Pound
5/19/2010	Red Rooster	140 George W. Lee	38103	34 - D	1000 Gallons
5/19/2010	Red Rooster	140 George W. Lee	38103	34 - D	40 Pound
5/19/2010	Southern Avenue Charl	2221 Democrat Rd.	38132	65 - H	100 Pound
5/19/2010	Spot, The	616 Marshall	38103	35 - B	10 Pound

Inspection Date	Facility Name	Address	Zip Code	Map Book	GRE
5 /19/2010	Starbucks Coffee	170 G. W. Lee	38103	34 - D	1000 Gallons
5 /19/2010	Wendy's	315 Washington	38111	45 - E	250 Gallons
5 /19/2010	Westin Hotel & Daily Gr	170 Lt. George W. Lee	38103	34 - D	1000 Gallons
5 /19/2010	Wingmen Express	3409 Raleigh Springs Mall	38134	11 - K	20 Pound
5 /20/2010	Da Burrito Factory	2477 Poplar Avenue	38112	37 - A	100 Pound
5 /20/2010	Dawg Gone Good Deli	461 E. Shelby Drive	38109	81 - J	100 Pound
5 /20/2010	Krystal	1688 Sycamore View Road	38134	25 - P	500 Gallons
5 /20/2010	Lo Yo Yogurt	559 Erin Dr.	38117	46 - G	100 Pound
5 /20/2010	Pyramids Grill and Buf	6090 Macon Cave	38134	33 - D	350 Gallons
5 /20/2010	Shoney's #313	5829 Summer Avenue	38134	25 - P	500 Gallons
5 /20/2010	Southern Avenue Chart	2221 Democral Rd.	38132	65 - H	100 Pound
5 /21/2010	Cracker Barrel	6081 Shelby Oaks Drive	38134	25 - P	500 Gallons
5 /21/2010	Foreign Language Imm	650 Harbor Edge	38103	27 - D	0
5 /21/2010	MCS - Brownsville Rd.	5292 Banbury Ave.	38135	12 - E	250 Gallons
5 /21/2010	Perkins Restaurant	1571 Sycamore View Road	38134	25 - P	350 Gallons
5 /21/2010	Spaghetti Warehouse	40 Huling	38103	34 - H	200 Gallons
5 /21/2010	Taco Bell #2547	1740 Sycamore View Road	38134	25 - O	250 Gallons
5 /21/2010	TCBY	1708 Union Avenue	38104	36-F	750 Gallons
5 /24/2010	Burger King	1027 Union Avenue	38104	35 - C	1000 Gallons
5 /24/2010	China Restaurant	150 Jefferson Avenue	38103	28 - N	200 Gallons

Friday, July 09, 2010

Inspection Date	Facility Name	Address	Zip Code	Map Book	GRE
5 /24/2010	Church's Fried Chicken	2237 Frayser Blvd.	38127	8 - M	500 Gallons
5 /24/2010	Exxon	1003 Union Avenue	38104	35 - C	200 Gallons
5 /24/2010	Kids World	2341 Frayser Blvd.	38127	9 - J	5 Gallons
5 /24/2010	M.A.S.E. Cafeteria	20 Dudley	38103	35 - C	0
5 /24/2010	MCS Grizzlies Academ	168 Jefferson Avenue	38103	28 - N	200 Gallons
5 /24/2010	Shoney's South, Inc.	3081 Covington Pike	38128	17 - C	600 Gallons
5 /24/2010	St. Jude Hospital (Kay	262 Danny Thomas	38103	28 - J	1500 Gallons
5 /24/2010	Starbuck's Coffee / St.	262 Danny Thomas	38103	28 - J	100 Pound
5 /24/2010	Union Grove	2285 Frayser Blvd.	38127	8 - M	300 Gallons
5 /25/2010	Blue Fin	135 S. Main Street	38103	34 - D	20 Pound
5 /25/2010	Bluff City Coffee	505 Main Street	38103	34 - M	40 Pound
5 /25/2010	BP	695 Union Avenue	38103	35 - B	40 Pound
5 /25/2010	Domino's	686 Union Avenue	38103	35 - B	25 Pound
5 /25/2010	Felecia Suzanne's	80 Monroe Avenue	38103	27 - R	40 Pound
5 /25/2010	Leonard's BBQ Buffet	103 N. Main Street	38103	27 - M	50 Pound
5 /25/2010	Madison Ave. Café	143 Madison Avenue	38103	28-N	10 Pound
5 /25/2010	Madison Cafe	920 Madison Avenue	38103	35 - C	100 Pound
5 /25/2010	Madison Hotel, The	79 Madison Avenue	38103	28 - N	300 Gallons
5 /25/2010	McDonalds	905 Union Avenue	38103	35 - C	500 Gallons
5 /25/2010	Quetzal Coffee Shop / I	664 Union Avenue	38103	35 - B	30 Gallons

Inspection Date	Facility Name	Address	Zip Code	Map Book	GRE
5 /25/2010	Russwood Bar & Grill	160 Union Avenue	38103	27 - R	20 Pound
5 /25/2010	Russwood Bar & Grill	160 Union Avenue	38103	27 - R	50 Pound
5 /25/2010	Sekisui Downtown Rest	160 Union Avenue	38103	27 - R	
5 /26/2010	Burger King	2205 Frayser Blvd.	38127	8 - M	750 Gallons
5 /26/2010	Currents	50 Harbor Town	38103	27 - D	750 Gallons
5 /26/2010	El Paisano	6195 Macon Road	38134	33 - D	50 Pound
5 /26/2010	Flying Fish	105 S. Second St.	38103	34 - D	100 Pound
5 /26/2010	Gus' World Famous Ch	310 S. Front St.	38103	34 - G	10 Pound
5 /26/2010	Huey's	77 S. Second St.	38103	27 - R	30 Pound
5 /26/2010	Krystal	2153 Frayser Blvd.	38127	20 - B	1000 Gallons
5 /26/2010	Lenny's Sub Shop	22 S. Front St.	38103	27 - R	10 Pound
5 /26/2010	Madison Cafe	920 Madison Avenue	38103	35 - C	100 Pound
5 /26/2010	Memphis Sounds Loun	22 N. Third Street	38103		30 Pound
5 /26/2010	Mondo Subs	920 Madison Avenue	38103	35 - C	100 Pound
5 /26/2010	Mrs. Winners	5856 Summer Avenue	38134	25 - O	500 Gallons
5 /26/2010	Rendezvous, The	52 S. Second St.	38103	27 - R	200 Gallons
5 /26/2010	Rendezvous, The	52 S. Second St.	38103	27 - R	5 Pound
5 /26/2010	Starbucks Coffee - St.	5959 Park Avenue	38119	57 - C	0
5 /26/2010	Taco Bell #613	2183 Frayser Blvd.	38127	8 - M	750 Gallons
5 /26/2010	University of Tennessee	800 Madison Avenue	38103	35 - C	1000 Gallons

Friday, July 09, 2010

Page 18 of 26

Inspection Date	Facility Name	Address	Zip Code	Map Book	GRE
5 /27/2010	Exline's Best Pizza In T	2801 Kirby Parkway	38119	146 - F	50 Pound
5 /27/2010	McAlister's Deli	2857 Kirby Parkway	38119	146 - J	1000 Gallons
5 /27/2010	MCS - Oak Forest ES	7447 Nonconnah View Cv.	38119	147 - N	400 Gallons
5 /28/2010	Aldo's Pizza Pies	64 S. Main Street	38103	27 - R	100 Gallons
5 /28/2010	Captain D's	3057 Covington Pike	38128	17 - C	500 Gallons
5 /28/2010	Eatery, The	201 Poplar Avenue	38103	28 - O	20 Pound
5 /28/2010	MCS - Craigmont HS	3333 Covington Pike	38128	11 - M	500 Gallons
5 /28/2010	MCS - Craigmont MS	3455 Covington Pike	38128	11 - M	500 Gallons
5 /28/2010	Taco Bell #1684	3045 Covington Pike	38128	17 - C	120 Gallons
5 /28/2010	Wendy's	2221 Frayser Blvd.	38127	8 - M	500 Gallons
5 /31/2010	Chef's Downtown Wing	200 Poplar Avenue	38103	28-O	30 Pound
6 /1 /2010	Asian Palace	2920 Covington Pike	38128	17 - C	250 Gallons
6 /1 /2010	La Espiga	3024	38128		30 Gallons
6 /1 /2010	Los Reyes Mexican Re	3024 Covington Pike	38128	17 - C	250 Gallons
6 /1 /2010	Lutheran Village	3589 Covington Pike	38128	11 - H	350 Gallons
6 /1 /2010	Methodist Hospital Nort	3960 Covington Pike	38128	11 - H	2000 Gallons
6 /1 /2010	Subway	2938 Covington Pike	38128	17 - G	50 Pound
6 /1 /2010	Wendy's #53	3979 Covington Pike	38128	11 - D	500 Gallons
6 /2 /2010	Circle K	1923 Poplar Avenue	38104	36 - C	0
6 /2 /2010	DISH	948 Cooper	38104	43 - D	200 Gallons

Inspection Date	Facility Name	Address	Zip Code	Map Book	GRE
6/2/2010	Kroger	2632 Frayser Blvd.	38127	9 - F	540 Gallons
6/2/2010	Kroger	2632 Frayser Blvd.	38127	9 - F	11 Gallons
6/2/2010	Kwik Shop	6 Cooper	38104	36 - H	0
6/2/2010	Playhouse on the Squa	51 Cooper	38104	36 - H	0
6/3/2010	BP Shop	630 S. Third Street	38126	34 - M	250 Gallons
6/3/2010	Burger King	3951 New Covington Pike	38128	5 - P	250 Gallons
6/3/2010	Galloway United Metho	1015 S. Cooper	38104	43 - D	100 Gallons
6/3/2010	Gayhawk Restaurant	685 Danny Thomas	38126	35 - J	200 Gallons
6/3/2010	Luster's Sundry & Grill	470 E. Georgia Ave.	38126	35 - K	20 Pound
6/3/2010	McDonalds #6467	2062 Frayser Blvd.	38127	8 - I	110 Gallons
6/3/2010	MCS - Georgia ES	690 Georgia Avenue	38126	35 - K	500 Gallons
6/3/2010	Red Robin's Academy	1000 Cooper	38104	43 - D	8 Pound
6/3/2010	Red Robin's Academy	1000 Cooper	38104	43 - D	5 Pound
6/3/2010	Renee's Sandwiches	202 Bishop G.E. Patterson	38126	34 - H	74 Pound
6/3/2010	Square Foods	937 Cooper	38104	43 - D	100 Pound
6/3/2010	Starbucks Coffee	1850 Union Avenue	38104	36 - G	20 Pound
6/4/2010	Bani Restaurant	22 S. Cooper	38104	36 - D	50 Pound
6/4/2010	Burger King	3344 Austin Peay Highway	38128	11 - J	500 Gallons
6/4/2010	China Wok	3850 Austin Peay Highway	38128	11 - B	40 Pound
6/4/2010	Dixie Queen	3331 Overton Crossing	38127	8 - M	20 Pound

Inspection Date	Facility Name	Address	Zip Code	Map Book	CRF
6 /4 /2010	Don Don's Hot Wings	3620 Austin Peay Highway	38128	11 - F	20 Pound
6 /4 /2010	Kroger	3860 Austin Peay Highway	38128	11 - C	11 Gallons
6 /4 /2010	Kroger	3860 Austin Peay Highway	38128	11 - C	960 Gallons
6 /4 /2010	Kroger	3860 Austin Peay Highway	38128	11 - C	840 Gallons
6 /4 /2010	Krystal	3330 Austin Peay Highway	38128	11 - J	750 Gallons
6 /4 /2010	Malco Theatre	3384 Austin Peay Highway	38128	11 - J	30 Pound
6 /4 /2010	MCS - Peabody ES	2086 Young Avenue	38104	43 - C	750 Gallons
6 /4 /2010	Popeyes	3660 Austin Peay Highway	38128	11 - F	1000 Gallons
6 /4 /2010	Renee's Sandwiches	202 Bishop G.E. Paterson	38126	34 - H	74 Pound
6 /4 /2010	Young Ave. Deli	2119 Young Avenue	38104	43 - D	250 Gallons
6 /7 /2010	Bangkok Alley	715 W. Brookhaven Circle	38117	46 - H	50 Pound
6 /7 /2010	Dish Catering	1068 Cooper	38104	43 - D	40 Pound
6 /7 /2010	Easy Way Produce	596 Cooper	38104	36 - M	0
6 /7 /2010	McDonalds #15054	3950 Austin Peay Highway	38128	11 - C	50 Pound
6 /7 /2010	MCS - Always Middle	2601 Ketchum	38114	54 - N	250 Gallons
6 /7 /2010	Pizza Hut	4030 Singleton Pkwy.	38128	5 - P	1000 Gallons
6 /7 /2010	Starbucks Coffee	3388 Poplar Avenue	38111	38 - J	150 Gallons
6 /7 /2010	Starbucks Coffee	2698 Gormantown Parkway	38133	134 - G	20 Gallons
6 /9 /2010	Burger King	2205 Frayser Blvd.	38127	8 - M	750 Gallons
6 /9 /2010	Dixie Queen	3141 Austin Peay Highway	38128	16 - D	200 Gallons

Inspection Date	Facility Name	Address	Zip Code	Map Book	GRE
6 /9 /2010	Haveri's Pizza & Wings	4510 Millbranch Road	38116	82 - E	100 Pound
6 /9 /2010	Krystal	2153 Frayser Blvd.	38127	20 - B	1000 Gallons
6 /9 /2010	M & A Grocery	271 W. Person	38109	41 - O	50 Pound
6 /9 /2010	Papa Johns Pizza	3275 Austin Peay Highway	38128	11 - N	20 Pound
6 /9 /2010	Taco Bell #613	2183 Frayser Blvd.	38127	8 - M	750 Gallons
6 /9 /2010	Teavana	2760 N. Germantown	38133	134 - M	50 Pound
6 /9 /2010	Tony's Bar & Grill	3443	38128	11 - J	60 Pound
6 /9 /2010	Yum's	3283 Austin Peay Highway	38128	11 - N	50 Pound
6 /10/2010	CK's Coffee Shop	1698 Poplar Avenue	38104	36 - B	250 Gallons
6 /10/2010	Hill's Supermarket	2954 Overton Crossing	38127	8 - P	5 Gallons
6 /10/2010	Jim's Corner Grill	2978 Overton Crossing	38127	8 - P	0
6 /10/2010	McDonalds #2174	3363 Austin Peay Highway	38128	11 - J	1000 Gallons
6 /10/2010	MCS - Georgian Hills E	3930 Leweir	38127	2 - P	200 Gallons
6 /10/2010	MCS - Grandview Heig	2342 Clifton Ave.	38127	14 - D	205 Gallons
6 /10/2010	Midtown Market	836 Cooper	38104	36 - R	0
6 /10/2010	On Time Nite Club	2956 Overton Crossing	38127	14 - C	0
6 /10/2010	Otherlands	639 Cooper	38104	36 - M	0
6 /10/2010	Quizno's	1691 Poplar Avenue	38104	36 - B	1000 Gallons
6 /10/2010	Sammen Food Market	4210 Overton Crossing	38127	2 - M	20 Pound
6 /10/2010	Save-A-Lot	3465 Austin Peay Highway	38128		50 Pound

Inspection Date	Facility Name	Address	Zip Code	Map Book	GRE
6/10/2010	Smart Mart #2	4284 Overton Crossing	38127	2 - H	30 Pound
6/10/2010	Thessalonians Academ	4095 Overton Crossing	38127	2 - M	0
6/11/2010	B.B.'s Daycare	1073 S. Cooper	38104	43 - D	0
6/11/2010	Blue Coast Burrito	3546 Walker Avenue	38111	45 - E	750 Gallons
6/11/2010	Brushmark Restaurant,	1934 Poplar Avenue	38104	36 - C	500 Gallons
6/11/2010	Cooper Cottage	845 S. Cooper	38104	36 - R	0
6/11/2010	Dixie Queen	782 Highland	38111	45 - J	50 Gallons
6/11/2010	Humdingers	1134 Germantown Parkway	38106	139 - L	750 Gallons
6/11/2010	MCS - Delano ES	1716 Delano Ave.	38127	14 - F	5 Gallons
6/11/2010	MCS - Egypt ES	4160 Karen Rd.	38128	4 - L	250 Gallons
6/11/2010	MCS - Keystone ES	4301 Old Allen Rd.	38128	4 - J	750 Gallons
6/11/2010	MCS - Raleigh Egypt H	3970 Vollintine Avenue	38128	4 - L	1200 Gallons
6/11/2010	MCS - Scenic Hills ES	3450 Scenic Highway	38128	16 - E	30 Pound
6/11/2010	New Hope Christian Ac	3000 University Drive	38127	14 - D	300 Gallons
6/14/2010	Days Inn	2889 Austin Peay Highway	38128	16 - H	0
6/14/2010	Exline's Best Pizza In T	2935 Old Austin Peay Highw	38128	16 - D	50 Pound
6/14/2010	Jack Pirtles Chicken	1370 Poplar Avenue	38104	29 - N	750 Gallons
6/14/2010	Kroger	1366 Poplar Avenue	38104	29 - N	600 Gallons
6/14/2010	Kroger	1366 Poplar Avenue	38104	29 - N	75 Gallons
6/14/2010	Kroger	1366 Poplar Avenue	38104	29 - N	11 Gallons

Inspection Date	Facility Name	Address	Zip Code	Map Book	CRE
6 /14/2010	MCS - Corning ES	1662 Dabbs	38127	8 - B	250 Gallons
6 /14/2010	MCS - Frayser ES	1602 Dellwood	38127	8 - O	300 Gallons
6 /14/2010	MCS - Frayser HS	1530 Dellwood	38127	8 - N	250 Gallons
6 /14/2010	MCS - Westside Middle	3389 Dawn Dr.	38127	7 - K	100 Gallons
6 /14/2010	Memphis Mental Health	865 Poplar Avenue	38104	28 - P	500 Gallons
6 /15/2010	Big Star	3384 N. Thomas St.	38127	7 - L	500 Gallons
6 /15/2010	Hibachi Steak House	2809 Kirby Parkway	38119	146 - F	1000 Gallons
6 /15/2010	Kroger	3226 Thomas	38127	7 - L	11 Gallons
6 /15/2010	Kroger	3226 Thomas	38127	7 - L	400 Gallons
6 /15/2010	MCS - Whitney ES	1219 Whitney Avenue	38127	13 - D	500 Gallons
6 /15/2010	Penny Pantry	4991 Breckenwood	38127	118 - L	5 Gallons
6 /15/2010	SCS - Northaven ES	5157 N. Circle Rd.	38127	118 - F	300 Gallons
6 /15/2010	Starbucks Coffee	2801 Kirby Parkway	38119	146 - F	40 Pound
6 /15/2010	Subway	2809 Kirby Parkway	38119	146 - F	20 Gallons
6 /15/2010	VFW Post 4916	847 Whitney Avenue	38127	7 - P	0
6 /15/2010	VJ's BBQ & Pub	3174 Thomas	38127	7 - P	15 Gallons
6 /16/2010	Circle K	4010 Austin Peay Highway	38128	11 - J	20 Pound
6 /16/2010	Dixie Queen	782 Highland	38111	45 - J	50 Gallons
6 /16/2010	Exxon	2905 Kirby Parkway	38119	146 - E	200 Gallons
6 /16/2010	Gold Club, The	777 White Station	38122	32 - M	100 Pound

Inspection Date	Facility Name	Address	Zip Code	Map Book	GRE
6 /16/2010	Lenny's Sub Shop #49	12 S. Cooper	38104	36 - H	40 Pound
6 /16/2010	MCS - Balmoral ES	5905 Grosvenor Ave.	38119	57 - P	250 Gallons
6 /16/2010	Parkview Retirement H	1914 Poplar Avenue	38104	36 - C	70 Pound
6 /16/2010	Subway	3439 Austin Peay Highway	38128	11 - J	50 Pound
6 /16/2010	Wal-Mart Market	2856 Hickory Hill Road	38115	68 - F	750 Gallons
6 /16/2010	Wal-Mart Neighborhood	6990 Shelby Drive	38141	152 - L	750 Gallons
6 /17/2010	Al-Chymia Shrine Temp	5770 Shelby Oaks Drive	38134	33 - B	500 Gallons
6 /17/2010	Embassy Suites Hotel	1022 S. Shady Grove	38119	47 - P	350 Gallons
6 /17/2010	Hi-Tone Café	1913 Poplar Avenue	38104	36 - C	20 Pound
6 /17/2010	MCS - Shady Grove ES	5360 Shady Grove Rd.	38119	39 - R	400 Gallons
6 /17/2010	Pumping Station, The	1382 Poplar Avenue	38104	29 - N	20 Pound
6 /18/2010	BP	3727 N. Watkins Road	38127	7 - D	0
6 /18/2010	Citigo-Georgian Hills	3713 N. Watkins Road	38127	8-K	30 Pound
6 /18/2010	Exline's Best Pizza In T	3145 Watkins	38127	8 - O	30 Pound
6 /18/2010	Exxon	1856 Poplar Avenue	38104	36 - C	300 Gallons
6 /18/2010	Hol Spol BBQ	3701 Watkins	38127	8 - B	10 Pound
6 /18/2010	Java Cabana	2170 Young Avenue	38104	43 - D	0
6 /18/2010	KFC Y342238	3255 Austin Peay Highway	38128	11 - N	1000 Gallons
6 /18/2010	K-Mart	3165 Austin Peay Highway	38128	16 - D	1000 Gallons
6 /18/2010	Knowledge is Power Le	3303 Watkins	38127	8 - K	0

Inspection Date	Facility Name	Address	Zip Code	Map Book	GRE
6/18/2010	Lovely's Food Market	3427 N. Watkins Road	38127	8 - F	30 Pound
6/18/2010	New Hope Christian Ac	3277 Watkins	38127	8 - K	300 Gallons
6/18/2010	Piggly Wiggly	3666 Watkins	38127	8 - B	500 Gallons
6/18/2010	Premier Kids Enrichme	3475 Watkins	38127		50 Pound
6/18/2010	Sam's Snacks	1669 Cooper	38104	43 - P	10 Pound
6/18/2010	Sea Sea's	3659 Watkins	38127	8 - B	74 Pound
6/18/2010	Superio Foods	3327 Watkins	38127	8 - K	300 Pound
6/18/2010	Superlo Foods	3327 Watkins	38127	8 - K	500 Gallons
6/18/2010	Wing Basket	3455 Watkins	38127	8 - F	500 Gallons
6/21/2010	Cafe Ole	959 S. Cooper	38104	43 - D	300 Gallons
6/21/2010	McDonalds #7324	1389 Poplar Avenue	38104	29 - N	1000 Gallons
6/21/2010	Miamphis College of Art	1930 Poplar Avenue	38104	36 - C	40 Pound
6/22/2010	Mapco	1781 Kirby Parkway	38119	58 - B	200 Gallons
6/22/2010	Starbucks Coffee	5679 Poplar Avenue	38119	47 - O	70 Pound
6/22/2010	TJ Mulligans	6635 Quince Road	38119	146 - K	200 Gallons
6/23/2010	Cafe 1912	243 S. Cooper	38104	36 - H	40 Pound
6/23/2010	Caze Soul Food	1689 Jackson Avenue	38107	23 - F	500 Gallons
6/23/2010	Celtic Crossing	903 S. Cooper	38104	36 - R	20 Pound
6/23/2010	Fork It Over	2299 Young Avenue	38104		50 Pound
6/23/2010	Genghis Grill	2362 N. Germantown Pkwy.	38016	136 - D	750 Gallons

Inspection Date	Facility Name	Address	Zip Code	Map Book	GRE
6/24/2010	Asian Palace	5266 Summer Avenue	38122	32 - M	1250 Gallons
6/24/2010	Babylon	661 N. Mendenhall	38177	32 - P	100 Pound
6/24/2010	Barlight	661 N. Mendenhall	38122	32 - P	100 Pound
6/24/2010	Blue Fish, The	2149 Young Avenue	38104	43 - D	750 Gallons
6/24/2010	Casablanca Restaurant	2156 Young Avenue	38104	43 - D	50 Pound
6/24/2010	Greenbamboo	990 Germantown Parkway	38018	139 - P	750 Gallons
6/24/2010	Lou's Pizza Pie	2158 Young Avenue	38104	43 - D	50 Pound
6/24/2010	Park Avenue Market	3002 Park Avenue	38111	44 - L	100 Pound
6/25/2010	Baron Hirsch Synagogu	400 S. Yates	38119	47 - A	500 Gallons
6/25/2010	Chism's Wing Case	1674 Whitten Road	38134	26 - O	100 Pound
6/25/2010	Pointe, The	6480 Quince Road	38119	146 - E	800 Gallons
6/25/2010	Quince Nursing & Reha	6733 Quince Road	38119	146 - K	300 Gallons
6/25/2010	Teavana	2760 N. Germantown	38133	134 - M	50 Pound
6/29/2010	Abbey's Restaurant	2345 N. Germantown	38016	136 - D	1000 Gallons
6/29/2010	Jim & Nick's Bar-B-Que	2359 Germantown Parkway	38016	136 - D	2000 Gallons
6/29/2010	O'Charley's	2844 New Brunswick	38133		1500 Gallons
6/29/2010	TCSY	1708 Union Avenue	38104	36-F	750 Gallons
6/29/2010	Texas RoadHouse	2810 New Brunswick	38133	135 - E	1000 Gallons
6/30/2010	El Mezcal	694 Germantown Parkway	38018	142 - C	2500 Gallons
6/30/2010	McDonalds #10676	674 Germantown Parkway	38018	142 - C	1200 Gallons

Inspection Date	Facility Name	Address	Zip Code	Map Book	GRE
6/30/2010	Outback Steak House	1110 Germantown Parkway	38018	139 - L	250 Gallons
6/30/2010	Panera Bread	714 Germantown Parkway	38018		100 Gallons

Friday, July 09, 2010

Page 28 of 28

Second Quarterly Report 2010 (April 1, 2010 through June 30, 2010) Facilities in Violation and Corrective Actions Taken

Inspection Date	Facility Name	Address	Zip Code	Map Book	Enforcement Action
4 / 7 / 2010	Westy's	346 Main Street	38103	28 - E	Civil Penalty
4 / 8 / 2010	Memphis Marriott/Magnoli	250 N. Main Street	38103	28 - J	Violation
4 / 9 / 2010	Cafe Napoleon	86 N. Main Street	38103	27 - R	Violation
4 / 19 / 2010	Bluff City Coffee	505 Main Street	38103	34 - M	Violation
4 / 23 / 2010	Holiday Inn Downtown	160 Union Avenue	38103	27 - R	Violation
4 / 23 / 2010	Russwood Bar & Grill	160 Union Avenue	38103	27 - R	Violation
4 / 23 / 2010	Sekisui Downtown Restau	160 Union Avenue	38103	27 - R	Violation
4 / 26 / 2010	BP	695 Union Avenue	38103	35 - B	Violation
4 / 26 / 2010	Quetzal Coffee Shop / Int	664 Union Avenue	38103	35 - B	Violation
4 / 28 / 2010	University of Tennessee	800 Madison Avenue	38103	35 - C	Violation
5 / 7 / 2010	Memphis Sounds Lounge	22 N. Third Street	38103	28 - N	Violation
5 / 10 / 2010	MCS Grizzlies Academy	168 Jefferson Avenue	38103	28 - N	Violation
5 / 25 / 2010	Madison Ave. Café	143 Madison Avenue	38103	28 - N	Violation
5 / 25 / 2010	Madison Cafe	920 Madison Avenue	38103	35 - C	Violation
5 / 26 / 2010	Burger King	2205 Frayser Blvd.	38127	8 - M	Violation
5 / 26 / 2010	Huey's	77 S. Second SL	38103	27 - R	Violation
5 / 26 / 2010	Taco Bell #613	2183 Frayser Blvd.	38127	8 - M	Violation

Friday, July 09, 2010

Inspection Date	Facility Name	Address	Zip Code	Map Book	Enforcement Action
5 /28/2010	Sonic Drive-In	3540 Covington Pike	38128	11 - M	Violation
6 /3 /2010	BP Shop	630 S. Third Street	38126	34 - M	Violation
6 /3 /2010	Gayhawk Restaurant	685 Danny Thomas	38126	35 - J	Violation
6 /3 /2010	Renee's Sandwiches	202 Bishop G.E. Patterson	38126	34 - H	Violation
6 /11/2010	Dixie Queen	782 Highland	38111	45 - J	Violation
6 /16/2010	Circle K	4010 Austin Peay Highway	38128	11 - J	Violation
6 /18/2010	Cilgo-Georgian Hills	3713 N. Watkins Road	38127	8-K	Violation

Second Quarterly Report 2010 (April 1, 2010 through June 30, 2010) Food Establishment Wastewater Discharge Permits Issued / Renewed

Date Issued	Facility Name	Date Expires	Address	Zip Code	Map Book
4 /1 /2010	Alfred's	3 /31/2015	197 Beale Street	38103	35 - A
4 /1 /2010	Dyers Burgers	3 /30/2015	205 Beale Street	38103	35 - A
4 /7 /2010	Subway	4 /6 /2015	464 Main Street	38103	28 - E
4 /20/2010	Safari World Tapas	4 /19/2015	414 S. Main Street	38103	28-E
4 /21/2010	Ventures One Stop	4 /20/2015	6105 Summer Avenue	38134	25-H
4 /27/2010	Madison Ave. Café	4 /26/2015	143 Madison Avenue	38103	28-N
4 /27/2010	Market Café	4 /26/2015	149 Madison Avenue	38103	28-N
4 /28/2010	Euro Style	4 /27/2015	6534 Quince Road	38119	146 - E
4 /28/2010	Euro Style	4 /27/2015	6534 Quince Road	38119	146 - E
5 /3 /2010	Cafe Eclectic	5 /2 /2015	111 Harbor Town	38103	27-D
5 /3 /2010	First Methodist Church	5 /2 /2015	204 N. Second Street	38103	28 - J
5 /5 /2010	Cockadoo's	5 /4 /2015	85 S. Second St.	38103	27-R
5 /10/2010	R & R Deli	5 /9 /2015	200 Jefferson Avenue	38103	28-O
5 /17/2010	Chef's Downtown Wings an	5 /16/2015	200 Poplar Avenue	38103	28-O
5 /17/2010	M & A Quick Stop Project	5 /16/2015	569 Poplar Avenue	38103	28 - O
5 /18/2010	Ferraro's Pizzeria & Pub	5 /17/2015	111 Jackson Avenue	38103	28-E

Friday, July 09, 2010

Date Issued	Facility Name	Date Expires	Address	Zip Code	Map Book
6/1/2010	Methodist Hospital, North	5/31/2015	3960 Covington Pike	38128	11 - H
6/1/2010	Subway	5/31/2015	2938 Covington Pike	38128	17 - G
6/9/2010	McDonalds #2174	6/8/2015	3363 Austin Peay Highway	38128	11 - J
6/9/2010	Save-A-Lot	6/8/2015	3465 Austin Peay Highway	38128	11 - J
6/9/2010	Subway	6/8/2015	3439 Austin Peay Highway	38128	11 - J
6/11/2010	In & Out	6/10/2015	742 S. Parkway East	38106	42 - K
6/14/2010	KFC Y342238	6/13/2015	3255 Austin Peay Highway	38128	11 - N
6/14/2010	K-Mart	6/13/2015	3165 Austin Peay Highway	38128	16 - D
6/17/2010	Al-Chymia Shrine Temple	6/16/2015	5770 Shelby Oaks Drive	38134	33 - B
6/18/2010	Citgo-Georgian Hills	6/17/2015	3713 N. Watkins Road	38127	8-K
6/21/2010	McDonalds #7324	6/20/2015	1389 Poplar Avenue	38104	29 - N
6/24/2010	Babylon	6/23/2015	661 N. Mendenhall	38177	32 - P
6/24/2010	Barlight	6/23/2015	661 N. Mendenhall	38122	32 - P
6/24/2010	Greenbamboo	6/23/2015	990 Germantown Parkway	38018	139 - P
6/24/2010	Park Avenue Market	6/23/2015	3002 Park Avenue	38111	44 - L
6/29/2010	Texas RoadHouse	6/28/2015	2810 New Brunswick	38133	135 - E
6/30/2010	El Mezcal	6/29/2015	694 Germantown Parkway	38018	142 - C
6/30/2010	McDonalds #10676	6/29/2015	674 Germantown Parkway	38018	142 - C
6/30/2010	Outback Steak House	6/29/2015	1110 Germantown Parkway	38018	139 - L

Second Quarterly Report 2010 (April 1, 2010 through June 30, 2010)

Recently Established Facilities (New Facilities)

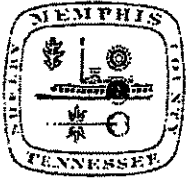
Date Approved	Facility Name	Address	Zip Code	Map Book	GRE
4 /9 /2010	Rubins's Diner	208 Brooks Road	38109	62 - F	100 Pound
4 /12/2010	Vietnamese Bistro	153 N. Cleveland	38104	36 - A	200 Gallons
4 /13/2010	Wok & Roll	3659 N. Watkins Road	38127	8-B	750 Pound
4 /15/2010	Genghis Grill	2362 N. Germantown Pkwy.	38016	136 - D	750 Gallons
4 /16/2010	Big Hong Kong	3312 Jackson Avenue	38122	23 - N	750 Gallons
4 /16/2010	County Line	2838 Coleman Road	38128	17 - E	100 Pound
4 /19/2010	El Padrino	3650 Ridgeway Road	38115	77 - H	250 Pound
4 /19/2010	Scales Café	2801 Kirby Road	38115	146 - E	100 Pound
4 /22/2010	Side St. Grill	35 Florence	38104	36 - H	750 Gallons
4 /22/2010	Side St. Grill	35 Florence	38104	36 - H	10 Pound
4 /29/2010	Kroger	2130 Exeter	38134	59 - F	1500 Gallons
4 /30/2010	Fairground's Concession	400 S. Hollywood	38104	44 - A	750 Gallons
4 /30/2010	Fairground's Concession	400 S. Hollywood	38104	44 - A	750 Gallons
5 /7 /2010	Asian Palace	5266 Summer Avenue	38122	32 - M	1250 Gallons
5 /7 /2010	Chris' Corner	2886 Walnut Grove Road	38111	36 - G	100 Pound
5 /10/2010	Yogurite	5030 Poplar Avenue	38117	46 - G	100 Pound

Friday, July 09, 2010

Date Approved	Facility Name	Address	Zip Code	Map Book	GRE
5 /20/2010	Da Burrito Factory	2477 Poplar Avenue	38112	37 - A	100 Pound
5 /20/2010	Dawg Gone Good Deli	461 E. Shelby Drive	38109	81 - J	100 Pound
5 /20/2010	Lo Yo Yogurt	559 Erin Dr.	38117	46 - G	100 Pound
5 /20/2010	Southern Avenue Charte	2221 Democrat Rd.	38132	65 - H	100 Pound
5 /28/2010	Aldo's Pizza Pies	64 S. Main Street	38103	27 - R	100 Gallons
6 /7 /2010	Bangkok Alley	715 W. Brookhaven Circle	38117	46 - H	50 Pound
6 /7 /2010	Bangkok Alley	715 W. Brookhaven Circle	38117	46 - H	50 Pound
6 /7 /2010	Bangkok Alley	715 W. Brookhaven Circle	38117	46 - H	50 Pound
6 /9 /2010	M & A Grocery	271 W. Person	38109	41 - O	50 Pound
6 /9 /2010	Teavana	2760 N. Germantown	38133	134 - M	50 Pound

Appendix C

Food Establishment Application



**City of Memphis Division of Public Works, Environmental
Food Establishment Wastewater Discharge Program**

2303 N. Second St., Memphis, TN 38127 ~ 901-636-4328 / Fax 901-636-4325

Section 33-112-04 of the Sewer Use Ordinance requires Food Establishments (FEs) to complete and submit this Permit Application to the Program.

Existing Building? YES / NO New Facility? YES / NO New Construction? YES / NO

(Name of Food Establishment) _____ (Applicant Name) _____

(Street Address) _____ (City) _____ (Zip Code) _____ (Phone Number) _____

FE Type (ex. Fast Food, Full Service, Church, Daycare, Cafeteria, etc.): _____

Daily Food Preparation Times: _____
(Mon) (Tue) (Wed) (Thur) (Fri) (Sat) (Sun)

Description of food preparation: _____

Seating Capacity: _____ # Employees _____ Size of Kitchen: _____
Est. Oils & Grease to be Used (gals/day or lbs/day) _____ / _____ (Length) (Width) (Total Area)
(Average) (Max)

Estimated Wastewater Discharge Rate (GPD): _____

List of Equipment (Number of Each Type):

(Deep Fryers)	(Broilers/Grills)	(Stoves/Ranges)	(Ovens)	(Woks)
(Hoods)	(Dishwashers)	(Garbage Disposals)	(3-Comp Sinks)	(2-Comp Sinks)
(Top Sinks)	(Other Sinks)	(Grease Removal Equip)	(Strainers)	(Cleanout Caps)

(Other Equipment) _____

*Proposed Grease Removal Eqmt (GRE) size or sizes: _____

Engineer or Architect Name & Contact Info: _____

Contractor Name & Contact Info: _____

Important Anticipated Dates

Start of Construction: _____ GRE Installations: _____
(Start Date) (End Date)

Const. Completed: _____ FE Open for Business: _____

Scaled plan showing locations of equipment that use FOG, GREs, sewer lines from kitchen to sewer connection and any other support documents for this application must be attached to this form.

For official use only	
(Reviewer Name) _____	Was adequate information provided? YES / NO _____
(Date Reviewed) _____	Date Requested Adnl Info _____
Application approved? YES / NO _____	(Signature/Date) _____
Comments: _____	

* Section 33-112-01 - Design Criteria. All grease traps used in conjunction with food service establishments shall have the capacity of 15 gallons per seat except that no single grease trap shall be smaller than 750 gallons or larger than 5000 gallons. In certain cases, multiple grease traps may be utilized. Alternative treatment technologies will be considered on a case-by-case basis for food establishments that are to be located in an existing building where a large grease trap is not feasible.

Appendix D

Food Establishment Permit



The City of Memphis, Division of Public Works, Environmental
Food Establishment Wastewater Discharge Program Permit
2302 North Second Street, Memphis, Tennessee 38127-7500
Phone: (901) 576-4328 Fax: (901) 357-4607

EFFECTIVE DATE: _____

EXPIRATION DATE: _____

Applicant (Owner) Name: _____ Phone No.: _____

Food Establishment (FE) Name: _____

Address: _____ Type: _____

Maximum Seating Capacity: _____ Number of Employees: _____ Op. Hrs./Days Open: _____

EQUIPMENT

- | | | | |
|------------------------------------|---------------------|-------------------|-----------------------|
| ___ Deep Fryers | ___ Broilers/Grills | ___ Stoves/Ranges | ___ Ovens |
| ___ Woks | ___ Hoods | ___ Dishwashers | ___ Garbage Disposals |
| ___ 3-Comp. Sinks | ___ 2-Comp. Sinks | ___ Mop Sinks | ___ Other Sinks |
| ___ Grease Removal Equipment (GRE) | ___ Strainer | ___ Cleanout Cap | |

Minimum GRE Cleaning Frequency: _____

GRE Type: _____ GRE Capacity: _____ [lbs.] or _____ [gals.]

GRE Location: _____

___ Used Grease & Oil Recycle Bins, Grease Recycling Co. Name: _____

VARIANCES

GRE Required: Yes or No / GRE Type Required: _____ / FE Allowed to Clean GRE: Yes or No
Size: Yes or No - Ordinance require size _____

LOCATION SPECIFIC - PERMIT CONDITIONS:

I hereby certify that the above information is correct; and that I am aware that changes in any of the above information will require a re-application and possible increase in the size or type of GRE required. In addition, I agree to abide by the General Permit Conditions and the City Sewer Use Ordinance; and to have the grease interceptor pumped out a minimum of once per month by a certified grease trap cleaning company, or as approved in LOCATION SPECIFIC - PERMIT CONDITIONS, to maintain the GRE in proper operating condition, as noted in the permit. This permit is valid only for the specific FE, FE location, ownership, GRE, equipment, processes and/or operations indicated above. As such, this permit cannot be sold, transferred or reassigned.

Name (Print): _____ Title: _____

Signature: _____ Date: _____
(Representing the Food Establishment)

Signature: _____ Date: _____
(Representing the City of Memphis, Division of Public Works)

This permit was received for the FE by:

Name (Print): _____ Title: _____

Signature: _____ Date: _____
(Representing the Food Establishment)

Please See Reverse Side for the General Permit Conditions

Section 33-112-01 of the Food Establishment Wastewater Discharge Ordinance

- A. **Grease Trap Required:** All food service establishments discharging wastewater to the City's wastewater facilities shall install, operate, and maintain a sufficiently sized oil and grease, water and solids separator (hereinafter called grease trap) necessary to achieve and maintain compliance. Approval of the City of Memphis, Public Works Division will be required during the construction plans approval process.
- B. **Design Criteria:** All grease traps used in conjunction with food service establishments shall have the capacity of 15 gallons per seat, except that no single grease trap shall be smaller than 750 gallons or larger than 3000 gallons. In certain cases, multiple grease traps may be utilized. Alternative treatment technologies will be considered on a case-by-case basis for food establishments that are to be located in an existing building where a large grease trap is not feasible.
- C. **General Permit to Discharge:** All food establishments will obtain a permit to discharge to the wastewater system from the Division of Public Works. This permit will be posted on the premises and renewed as needed. The permit will require the permit holder to comply with the following requirements:


GENERAL PERMIT CONDITIONS

1. Retain this permit on the premises and make available upon request. [Section 33-112-01C]
2. Have grease removal equipment (GRE) intercept the waste lines leading from all sinks, drains, appliances, and other fixtures or equipment used in food preparation or cleanup where fat, oil, grease or greasy matter may be introduced into the sewer system. [Section 33-112-08]
3. Confine all processes that may introduce fat, oil, grease, and greasy matter into the sewer to fixtures connected to GRE. [Section 33-112-08]
4. No matter containing more than 500 mg/L of oil and grease or that might otherwise obstruct the sewer flow, nor any matter that might create a hazardous condition may be discharged into the sewer system. [Sections 33-112-02, 33-112-08 and 33-112-09]
5. Maintain GRE in efficient operating condition by periodic removal of the accumulated grease and solids. No such collected material shall be introduced into any drainage pipe or public sewer. [Section 33-112-08]
6. Maintain a GRE cleaning log or save maintenance receipts. Retain on the premises for a period of no less than two (2) years. [Section 33-112-09]
7. Provide a collection drum or other container for maximum segregation of fat, oil, and grease. [Section 33-112-08]
8. Implement and post a grease spill control plan when required. [Section 33-112-08]
9. You must notify the Food Establishment Wastewater Discharge (FEWD) Program within 14 days at (901) 576-4328 of any:
 - a. Sale, lease, transfer, or reassignment of premise or operation [Section 33-112-06]
 - b. Change of facility name [Section 33-112-06]
 - c. Material changes in food preparation or kitchen practices and/or addition of equipment that requires and/or generates fats, oils, or grease. [Section 33-112-06]
10. You must notify the Food Establishment Wastewater Discharge (FEWD) Program within five (5) days at (901) 576-4328 of any spills that result in the discharge of fats, oils, or grease to the sewer system
11. You must allow City representative(s) ready access at all reasonable times to all parts of the premises for purpose of sampling and inspection. [Sections 33-112-09, 33-141 and 33-143]
12. Permit is non transferable; any sale, lease, transfer, or assignment of the premise or operation for which it was issued shall require a new permit. [Section 33-112-06]
13. The terms and conditions of the permit are subject to modifications and change by the City during the life of the permit. [Section 33-112-05]
14. Any person(s) who knowingly makes any false statement or representation, or submits any false record, report, plan, or other document shall be guilty of violating the City of Memphis Sewer Use Ordinance.
15. Any person(s) discharging wastewater in violation of the Food Establishment Wastewater Ordinance or FEWD Permit is subject to fines, civil penalties, cost recovery, injunction, termination of sewer service, permit revocation and/or such other remedies as are available to the Director. [Section 33-112-10]

Appendix E

Food Establishment Denial Letter

[Faint, illegible text, likely a denial letter or form, possibly containing a signature and date.]

City of 
Memphis
TENNESSEE

1403
Division of Public Works, Environmental
Food Establishment Wastewater Discharge Program
2303 North Second Street, Tennessee 38127-7500
Telephone: (901) 576-4301 Fax: (901) 636-4325

Thursday, July 08, 2010

Laura Swift
Save-A-Stop
1461 Pendelton
Memphis, TN 38114

RE: Save a Stop @ 1461 Pendelton

Mrs. Swift,

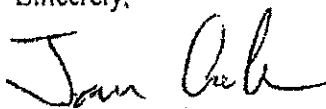
This letter is in reference to your request on July 8, 2010 requesting a review and approval for a grease trap.

You must install a GRE with a capacity of 100 pounds. The installation must meet Shelby County Code requirements in order to be permitted.

Please be advised that alternative treatment technologies have been approved in the treatment of this facility's wastewater. A more frequent cleaning schedule may be required after the trap has been placed into service. Additionally, the City of Memphis reserves the right to require larger and/or additional pretreatment equipment should conditions ever indicate a need. Please note that you are required to notify the City of Memphis of any changes in the operations of this business.

If you should have any questions, please contact me at (901) 576-4301.

Sincerely,



James Greenlee, E.I.T.
Industrial Monitoring

Appendix F

GRE Maintenance Log

Appendix G

Inspection Checklist/NOV



The City of Memphis, Division of Public Works, Environmental Food Establishment Wastewater Discharge Inspection Checklist / Notice of Violation.

Business Name: _____ Contact Person: _____

Address: _____ Phone Number: _____

Date: _____ Time: _____ Inspection Type: Initial / Annual / Follow-up / Other

- 1. Permit unavailable. [Section 33-112-01C]
- 2. Maintenance Log unavailable or incomplete. [Section 33-112-09]
- 3. Food Establishment Sold, Transferred, or Re-assigned. [Section 33-112-06]
- 4. Inspector denied reasonable access. [Section 33-112-09]
- 5. Violation of location specific – permit conditions. [Section 33-112-08]

Nos. 1, 2, 3, 4, or 5 is immediate failure due to negligence of Permit Conditions and the Sewer Use Ordinance

6. GRE Size _____ [lbs. or gals.] 8. Total depth _____ [ft.- in.]

7. GRE Location _____ 9. Thickness of accumulated grease _____ [ft.- in.]

No. 9 (above) greater-than or equal to 1/3 of No. 8 (above), therefore, GRE is not being properly maintained and must be cleaned within two (2) weeks.

10. Amount of grease build up on interior walls of the trap approximately _____ [inches]

No. 10 (above) is deemed to be excessive; trap must be cleaned within two (2) weeks.

11. Current grease trap cleaning frequency _____ Date Last Cleaned _____

Increase grease trap cleaning frequency from _____ to _____. (Notify Program Mgr.)

Reason for cleaning frequency increase _____

12. Which of the following fixtures are incorporated in the trap?

Baffle ____ / Invert or vent pipe ____ / Inspection plate ____ / Other (specify) _____

13. Condition of baffle (where applicable)

- Excessive grease build-up (baffle must be cleaned).
- Excessive rust or other physical flaws (baffle must be replaced).
- Improperly installed (baffle must be re-installed correctly).

14. Strainers & Clean-out Caps

- Missing or damaged strainers must be replaced at (specify locations) _____
- Missing or damaged clean out caps must be replaced at (specify locations) _____

15. Inspection Results

- Inspection Passed
- Inspection Failed – Take corrective measures as indicated above.
- Inspection Failed due to Nos. 1 or 3, and possibly No. 5 requires new permit to be issued.

Civil Penalty Served Civil Penalty No. _____ Date Served _____

A follow-up inspection will be conducted on _____ to ensure compliance with the corrective measures indicated above. If required, a new permit will be issued at this time.

Any person(s) discharging wastewater in violation of the Food Establishment Wastewater Ordinance or FEWD Permit is subject to fines, civil penalties, cost recovery, injunction, termination of sewer service, permit revocation and/or such other remedies as are available to the Director. [Section 33-112-10]

Comments _____

Inspection Conducted by: _____ [Phone No. (901) 576-4328]

Notice of Violation Received by: _____ Date Received _____

Appendix H

Approved Waste Haulers

City of Memphis Permitted Waste Haulers

<u>Wastehauler Name</u>	<u>Phone Number</u>	<u>Wastehauler Name</u>	<u>Phone Number</u>
A Rooter Man	(901) 681-0888	Mid-South Septic	(901) 867-2085
A-1 Septic Tank & Drain Ser	(662) 233-4565	Performance Contracting	(901) 377-3289
AAA Pumping Service	(901) 388-1867	Property Maintenance	(901) 576-4776
ABC Septic Service	(662) 838-4433	Rineco	(501) 778-9089
A-OK Pumping Services	(662) 781-7735	Rogers Pumping Service	(901) 357-5306
Arrow Portable Services, Inc	(901) 360-0980	Saftey Quip	(901) 452-7040
Billy Rogers	(901) 652-8954	Sanl-Tech Services	(615) 843-6828
Blue Star Environmental	(901) 890-2300	Silvey Service	(901) 872-0772
Budget Septic Servicees	(901) 837-0503	Snyder Services Plumbing	(901) 452-5953
Caver Septic Service, LLC	(800) 576-7191	Southern Distributors	(901) 743-0023
David Cleveland Pumping	(901) 353-4422	Synagro	(256) 351-0448
David Hensley Pumping Ser	(901) 872-7968	Thompson Industrial Servic	(901) 362-7700
Dyno Sewer (A-Aaa Dutton	(901) 360-8888	Underground Unlimited Wa	(901) 497-1291
Early Environmental Contra	(502) 647-3223	Universal Transport, Inc.	(501) 888-6557
Grant County Excavation	(575) 534-4239	Upchurch Services, LLC	(901) 388-0333
Grease Trap Service Pros.	(870) 732-0012		
Griffin Industries Inc.	(901) 396-3191		
Guy's Plumbing	(901) 461-2175		
Hill Services Industrial & En	(901) 388-7500		
Hill Services Plumbing & H	(901) 388-7500		
Holmes	(901) 357-1200		
Jim's Tank Service	(901) 357-7237		
Jolly Septic Service	(901) 553-2454		
Laceys Cleaning Company	(662) 470-4305		
Layne Central Company	(901) 274-2324		
Lindy's Pumping Service	(901) 353-3433		

**City of Memphis, Division of Public Works
Agreement to Discharge Hauled Waste
Permit # 000000**

1. **Company Name:**
2. **Company Representative:**
3. **Company Address:**
Street Number & Name and City/State/Zip Code
4. **Mailing Address:**
5. **Phone Number:**

By this agreement and under the limitations specified by the Division of Public Works
----- is authorized to discharge hauled waste at the M. C. Stiles Treatment Plant.

Four types of hauled wastewaters from anywhere will be accepted for disposal with properly completed manifest without prior written approval. These four types of wastes are residential household septic tanks, restaurant grease traps, drive through car wash traps, and portable toilets. These four types of wastes will be accepted for a charge based on the current rate per gallon of truck capacity as determined by the Division of Public Works. The waste hauler will be billed the following month for all the volumes discharged for the previous month. Payments to the City must be paid within two weeks of the billing date or disposal privileges will be withdrawn.

Hauled Wastewater Billing
City of Memphis, Division of Public Works
P.O. Box 27170
Memphis, Tennessee 38167-0170

No industrial wastewater including landfill leachate and/or wastewater of any kind originating from an industrial entity located in the City of Memphis sewer service area may be picked up for disposal unless the entity producing the waste has a letter of approval from the City of Memphis Environmental Department. The generator of the waste must write a letter containing all required information requesting approval to dispose of the waste and must receive the letter of approval prior to the pick up of the waste. A copy of the approval letter and properly completed manifest must accompany the permitted waste hauler during the disposal at the City of Memphis' designated discharge point. The disposal fee will be based on the current rate per gallon of truck capacity as determined by the Division of Public Works.

Industrial wastewaters and sludges generated outside the City of Memphis sewer service area will have to be evaluated on a case by case basis and the disposal fees will be based on the type of wastewater generated and will have to be agreed upon with the generator of waste and the City of Memphis prior to transporting of the waste. After the City of Memphis and the waste generator have agreed in a formalized document, a letter of approval will be issued, and a copy of this

approval letter will have to accompany the licensed waste hauler during the disposal in addition to the properly completed manifest. The disposal fee will be determined on a case-by-case basis for industrial wastewaters and sludges from outside the City of Memphis sewer service area.

No hazardous waste may be picked up from any source for disposal at the City of Memphis' designated discharge point. All hauled wastewater must have a pH of 5.5 standard units or above and have been certified by the originator of the wastewater as containing no compounds in concentrations that would make the wastewater classified as a hazardous waste. Decanting or back flushing of the grease trap or its wastes for the purpose of reducing the volume to be hauled is prohibited.

Failure to renew and/or obtain a waste hauler permit will result in the waste hauler not being allowed to use the City of Memphis' designated discharge point for disposal.

Violation of any of the City of Memphis requirements for discharging hauled wastewater will result in enforcement actions, which may include administrative fines, withdrawal of the privilege to use the City of Memphis wastewater system, and suspension of the existing waste hauler permit and/or prohibition from obtaining a new waste hauler permit,

Whereas, ----- located at ----- desires to discharge to the Memphis sewer system; and

Whereas, ----- agrees to comply with all requirements specified above and any revision thereof.

Now therefore, ----- is granted the right to discharge hauled wastewater of such characteristics and volume as described in this wastewater discharge permit into the City of Memphis sewer system from July 21, 2005 to July 21, 2006.

Approved by:

Authorized Company Representative:

Manager, Industrial Monitoring

Signature/Date

Appendix J

Liquid Waste Manifest

**CITY OF MEMPHIS
DIVISION OF PUBLIC WORKS
LIQUID WASTE HAULER MANIFEST FORM**

Company Name _____

Permit No. _____ Truck License No. _____

Card No. _____ Gallons Pumped _____

Date Pumped _____ Time Pumped _____

Customer Name _____

If Customer is a Business, Type of Business _____

Customer Phone Number _____

Address _____

Vessel Pump was: _____ Septic Tank _____ Grease Trap _____

Other (describe): _____

CUSTOMER CERTIFICATION

As an authorized representative of the above named customer, I certify under penalty of law that the above information is true and correct to the best of my knowledge, and further certify that the material being pumped does not contain hazardous wastes as defined by the Federal Resource Conservation and Recovery Act.

Signature _____ Date _____

Print Name/Title _____

LIQUID WASTE HAULER CERTIFICATION

I certify under penalty of law that the above information is true and correct to the best of my knowledge, and further certify that the truck listed above contains the materials listed above in Customer Certification and does not contain hazardous wastes as defined by the Federal Resource Conservation and Recovery Act.

Signature _____ Date _____

Print Name/Title _____

To be completed by M. C. Stiles Treatment Plant Representative at the time of discharge:

Date: _____ Time: _____ Sample ID No. (if collected): _____

Comments: _____

Print Name/Title _____

White copy - Wastewater
Canary copy - Hauler
Pink copy - Customer

Appendix K

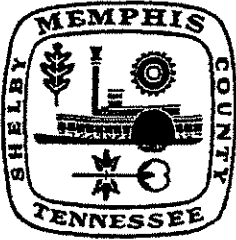
Waste Log

DAILY LOG FOR DISPOSAL OF HAULED WASTE AT THE STILES TREATMENT PLANT

Date: _____

	Time	Company Name	Sewer Fee Truck Billing #	Truck Tank Capacity (Gallons)	Driver Name	Operator Name
1						
2						
3						
4						
5						
6						
7						
8						
9						
10						
11						
12						
13						
14						
15						
16						
17						
18						
19						
20						
21						
22						
23						
24						
25						
26						
27						
28						
29						
30						
31						
32						
33						
34						
35						
36						
37						
38						

Appendix L
Door Hanger

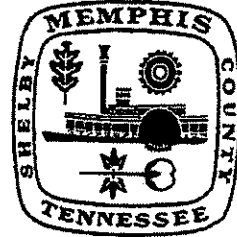


CANTIDAD EXCESIVA DE LA ALACANTARILLA EN SU VECINDARIO

La Ciudad respondió recientemente a la cantidad excesiva de la alcantarilla que fue causada por la GRASA.

Respuestas por la capacidad excesiva les CUESTA DINERO a los CONTRIBUYENTES.

PARA PROTEGER SU SISTEMA DE PLOMERÍA, NUESTRA SALUD, EL AMBIENTE, Y LAS ALCANTARILLAS DE LA CIUDAD, ACEPTÉ LA TAPA REUTILIZABLE "ECHA LA GRASA EN UNA LATA"



SEWER OVERFLOW IN YOUR NEIGHBORHOOD

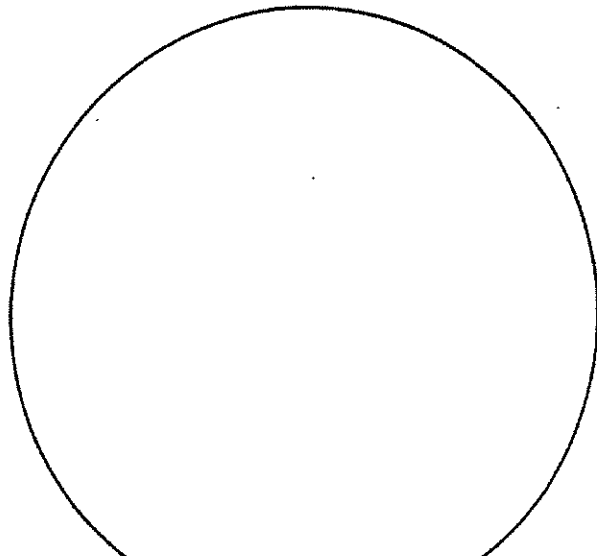
The City recently responded to a sewer overflow which was caused by GREASE in the sewer.

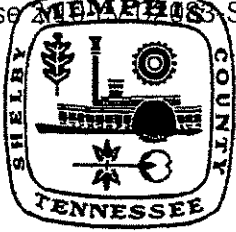
Overflow Response COSTS Taxpayers MONEY.

TO PROTECT YOUR PLUMBING SYSTEM, PUBLIC HEALTH AND ENVIRONMENT & THE CITY'S SEWERS, Please accept the attached reusable lid to help the City "CAN THE GREASE"

ECHA LA GRASA EN UNA LATA!

1. Eche la grasa en una lata.
2. Póngale la tapa y luego en el congelador.
3. Cuando se llene, quite la tapa y eche la lata en la basura.
4. Reutilice la tapa.





SEWER OVERFLOW IN OUR NEIGHBORHOOD

The City recently responded to
sewer overflow which was caused by
GREASE in the sewer.

Overflow Response **COSTS** Taxpayers
MONEY.

**PROTECT YOUR PLUMBING SYSTEM,
PUBLIC HEALTH AND ENVIRONMENT
& THE CITY'S SEWERS.**

Please accept the attached reusable lid
to help the City
"CAN THE GREASE"

CAN THE GREASE!



1. Pour grease into a can.
2. Seal with lid and store can in freezer.
3. When full, remove lid and place can in trash.
4. Reuse lid.

901-636-4301

City of Memphis Public Works

**DO NOT POUR GREASE DOWN THE DRAIN
SAVE TAXPAYERS MONEY**

Appendix M
FOG Pamphlets

Fats, Oils, and Greases aren't just bad for your arteries and your waistline; they're bad for sewers, too.

Sewer overflows and backups can cause health hazards, damage home interiors, and threaten the environment. An increasingly common cause of overflows is sewer pipes blocked by grease. Grease gets into the sewer from household drains as well as from poorly maintained grease traps in restaurants and other businesses.

Where does the grease come from?

Most of us know grease as the byproduct of cooking. Grease is found in such things as:

- Meat fats
- Lard
- Cooking oil
- Shortening
- Butter and margarine
- Food scraps
- Baking goods
- Sauces
- Dairy products

Too often, grease is washed into the plumbing system, usually through the kitchen sink. Grease sticks to the insides of sewer pipes (both on your property and in the streets). Over time, the grease can build up and block the entire pipe.

Home garbage disposals do not keep grease out of the plumbing system. These units only shred solid material into smaller pieces and do not prevent grease from going down the drain.

Commercial additives, including detergents, that claim to dissolve grease may pass grease down the line and cause problems in other areas.

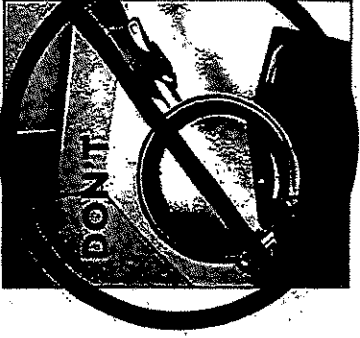
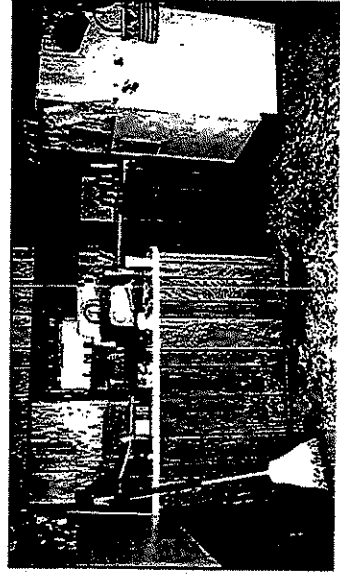


© James L. Graham, Jr., P.E.



The results can be:

- Raw sewage overflowing in your home or your neighbor's home;
- An expensive and unpleasant cleanup that often must be paid for by you, the homeowner;
- Raw sewage overflowing into parks, yards, and streets;
- Potential contact with disease-causing organisms; and
- An increase in operation and maintenance costs for local sewer departments, which causes higher sewer bills for customers.



What we can do to help

The easiest way to solve the grease problem is to prevent overflows of raw sewage from getting out of the sewer system in the first place.

There are several ways to help:

- 1) Never pour grease down sink drains.
- 2) Scrape grease and food scraps from pots, pans, utensils, and get them into a can or the trash for disposal (where available).
- 3) Do not put grease down garbage disposals, sink drains, or other drains.
- 4) Do not put grease down garbage baskets/strainers in sink drains or other drains.

the drain into the

Page 4 and the 4 in how you

What Restaurant and Building Owners Need to Know About Grease Traps or Interceptors

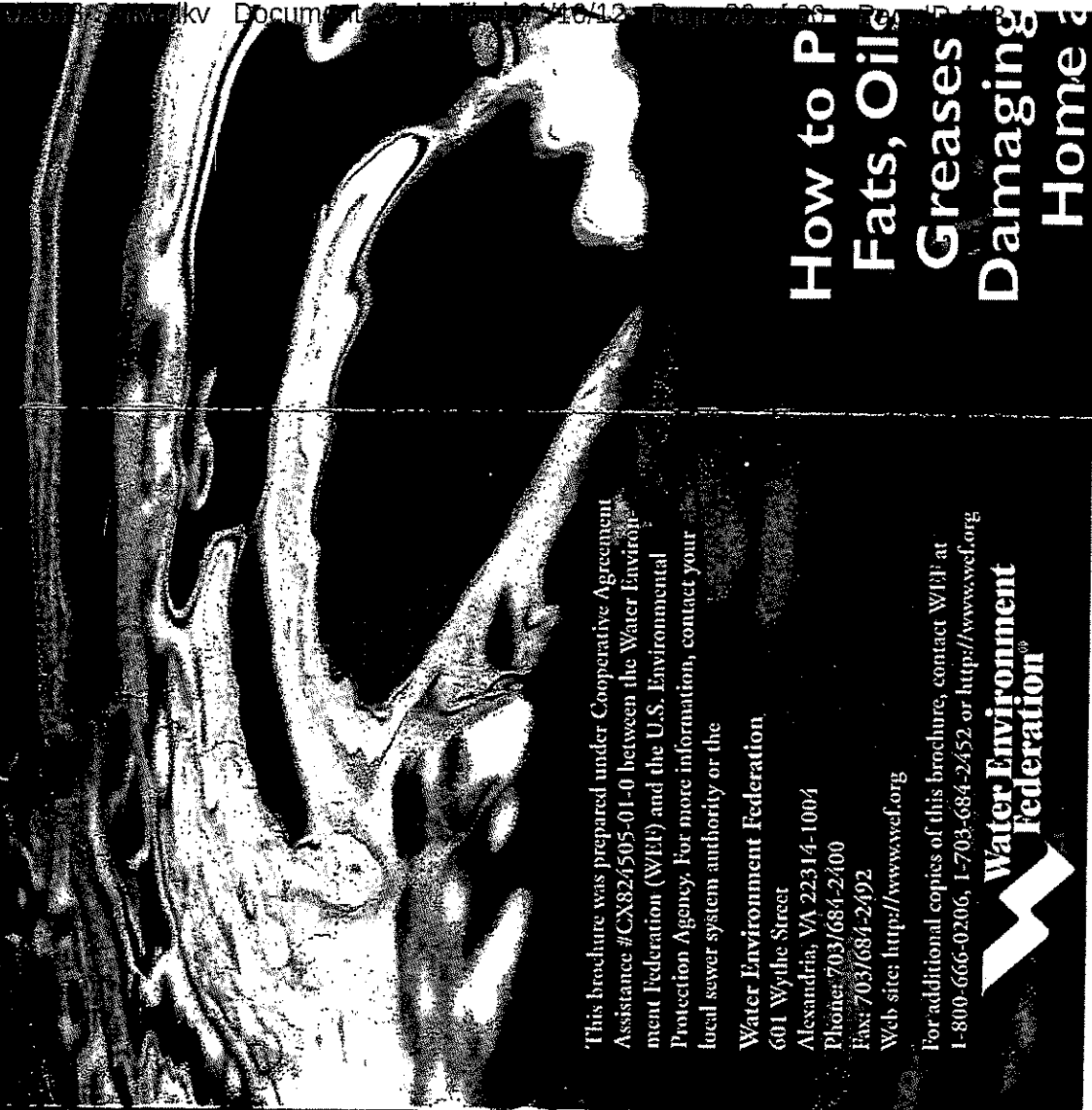
Restaurants, large buildings, such as apartment complexes; and other commercial establishments may have grease traps or interceptors that keep grease out of the sewer system. For a grease trap or interceptor to work correctly, it must be properly

- 1** Designed (sized and manufactured to handle the amount that is expected),
- 2** Installed (level, vented, etc.), and
- 3** Maintained (cleaned and serviced on a frequent basis).

Solids should never be put into grease traps or interceptors. Routine, often daily, maintenance of grease traps and interceptors is needed to ensure that they properly reduce or prevent blockages.

Be cautious of chemicals and additives (including soaps and detergents) that claim to dissolve grease. Some of these additives simply pass grease down pipes where it can clog the sewer lines in another area.

FATS SEWER



This brochure was prepared under Cooperative Agreement Assistance #CX82/505-01-0 between the Water Environment Federation (WEF) and the U.S. Environmental Protection Agency. For more information, contact your local sewer system authority or the

Water Environment Federation

601 Wythe Street

Alexandria, VA 22314-1004

Phone: 703/684-2400

Fax: 703/684-2492

Web site: <http://www.wef.org>

For additional copies of this brochure, contact WEF at 1-800-666-0206, 1-703-684-2452 or <http://www.wef.org>

**Water Environment
Federation®**

How to Prevent Fats, Oils Greases Damaging Home

son perjudiciales para las arterias
y para la figura; también son
dañinos para las alcantarillas.

Los derrames y reflujos de aguas
residuales pueden ser peligrosos
para la salud, dañar el interior de
los hogares y amenazar el medio
ambiente. Una causa cada vez
más común de derrames son las
obstrucciones de las tuberías de
alcantarillado por la grasa, que
penetra en el sistema desde
desagües domésticos y trampas
mal mantenidas en restaurantes
y otros negocios.

Para obtener copias adicionales de este folleto, llame al 1-800-666-0206
61-703-684-2452, o vaya a: <http://www.wef.org>.

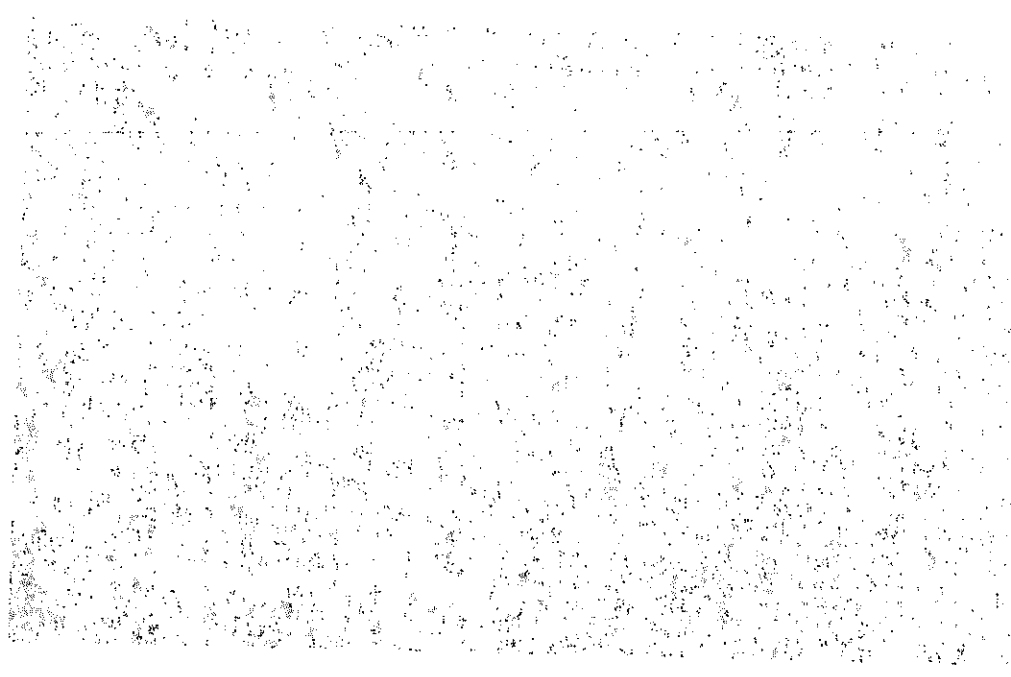


Copyright © 2000 Water Environment Federation.
Impreso en papel reciclado con tinta a base de soja.

N.º de reg. HSI 100 600

Appendix N

FOG Press Release





FOR IMMEDIATE RELEASE

CONTACT: Sharon Gordon, 576-4349, sharon.gordon@memphistn.gov

Keeping Cooking Fats, Oils, and Grease Out of City Sewer System Will Help Prevent Harmful Sewer Backups

Memphis, TN (December 3, 2009) – Do your part to prevent sewer backups by properly disposing of cooking fats, oils, and greases (FOG). These products should never be poured down a household sink – the FOG clings to pipes in the city's sanitary sewer system. Over time, this FOG may build up and block the pipe, causing overflows that could put contaminated sewage into your home, neighborhood, and area lakes, rivers, and streams.

The City of Memphis Storm Water Program encourages everyone to properly dispose of fats, oils, and greases as a way of helping prevent blockages that allow raw sewage to enter our city's storm water system. The storm water system carries water safely out of neighborhoods and delivers it to the Loosahatchie and Wolf Rivers and to Nonconnah Creek. These in turn carry the water to the Mississippi River and McKellar Lake.

You can help prevent FOG-caused sewer backups by:

- Reusing cooking oil when possible, or properly disposing of it by placing it in a sealable container, refrigerating until the oil thickens, and disposing of the oils by including the container with your other garbage. You can dispose of small amounts of oil or grease by pouring the material on used newspaper or other absorbent material and placing it in your household garbage.
- Scraping food scraps in the trash, not the sink.
- Even when you run hot water after pouring grease into the sink, the grease will solidify and restrict the flow in the pipe as soon as the water cools, and may cause an overflow.
- Wiping pots, pans, and dishes before rinsing or washing them.
- Placing a catch screen over the sink drain when washing dishes to catch small scraps that would otherwise go down the drain.

A sewer backup in your home can cause damage, is unsanitary, and hard to clean up. A sewer backup in your neighborhood is unpleasant for all. So watch out for FOG – fats, oils, and greases – in the drain when working in your kitchen.

For more information about grease disposal, call 576-4328 or to report a sanitary overflow call 529-8025. To learn more about the city's Storm Water Program call 576-4349.

###

E-mailed to:

WKNO-FM

Entercom Radio, Memphis, which includes:

94.1 KQK Classic Hits

99.7 FM100

WMC 79 Country Legends

Am & fm

104.5 WRVR The River

92.9 FM and 680 AM ESPN Sports Radio

FAXed to:

The Commercial Appeal

The Cordova Appeal

Memphis Business Journal

The Memphis Flyer

The Daily News

The Downtowner

Daily Helmsman (U of M)

The Hebrew Watchman

The Tri-State Defender

Best Times

The Silver Star News

La Prensa Latina

WHBQ-TV

WLMT-TV

WPTY-TV

WMC-TV

WREG-TV

WREC AM

WKIM FM

KJMS FM

WCRV AM

KWAM AM

WEGR FM

WUMR FM

WLOK AM

WDIA AM

WHRK FM

WMPS AM

WHBQ AM and FM

KXHT FM

WMFS FM

WQOX FM