



**Request for Bid
Phase 1 Sewer Rehab Group 2 CIPP Addendum No. 3 to
RFB No. 197640.71.0390
November 23, 2021**



The following information encompasses Addendum No. 1 for the above referenced RFB. Bidders shall fully consider and acknowledge this Addendum in the preparation and submittal of its formal Bid. Failure to do so may result in the rejection of the Bid.

Section 1 – Updates to 00370 Commercial Bid Form

Section 2 – Updates to Technical Specifications

All other conditions and requirements remain unchanged.

**Section 1
Updates to 00370 Commercial Bid Form**

Table 00370.3.1 - Unit Price Bid Form

Bidder should refer to Section 00270, Instructions to Bidders, when completing this Bid Form. Bidder shall complete this form entirely and return it with Bidder's Bid.

Bid Submitted by: (Company Name)

00370.3 Bid Pricing Information

00370.3.1 Unit Pricing

Bidder proposes to complete the RFB Work based on firm, fixed, unit prices (US dollars), which prices multiplied by the final Work quantities would represent the full consideration to Bidder for its complete and satisfactory performance of the Work in compliance with all the terms and conditions of the RFB Documents. The Unit Prices in this Table include the cost of all the work which is required or implied by the RFB documents or which may be inferred therefrom, and which is customarily provided in furnishing a complete and finished work item of its kind. Further, any and all alterations, modifications, and adjustments to the work item, which is reasonably foreseeable or customarily encountered in providing and installing equipment, material, and services of the work item kind, will be performed without additional compensation.

In the event of a Purchaser-approved change in the scope of Work for which a unit price from this Table is not applicable, as determined by the Purchaser, the Subcontractor shall provide a new unit price for review and acceptance by the Purchaser. Subcontractor shall provide all information requested by the Purchaser to substantiate the value of the new unit price.

00370.3.1.1 Unit Prices Breakdown **Bidder Response Columns**

Item Number	Item Description	Unit of Measure	Estimated Quantity	Unit Price	Extension Price
71.0390 Phase 1 Sewer Rehab Group 2 CIPP					
02531-4.01.A	Manhole Replacement with Precast Manhole	Vertical Foot	48		\$ -
02531-4.01.B	Precast Manhole Installation	Vertical Foot	90		\$ -
02531-4.01.C	Pavement Backfill for Manholes	Cubic Yard	40		\$ -
02531-4.01.D	Traffic Control per MH Installation/Replacement	Crew Day	16		\$ -
Manhole Rehabilitation					
02533-4.01.A	Manhole Rehabilitation - Cementitious Coating	Vertical Foot	1,140		\$ -
02533-4.01.B.1	Sewer Manhole Inside Drop Construction (<5')	Each	21		\$ -
02533-4.01.B.2	Sewer Manhole Inside Drop Construction (5'-10')	Each	9		\$ -
02533-4.01.C	Invert and Bench Replacement	Each	11		\$ -
02533-4.01.E	Traffic Control for Manhole Rehabilitation	Crew Day	155		\$ -
CIPP					
02535-4.01.A-1.0	6" Diameter CIPP (0-10 feet)	Linear Foot	81		\$ -
02535-4.01.A-1.1	8" Diameter CIPP (0-10 feet)	Linear Foot	21,293		\$ -
02535-4.01.A-1.2	8" Diameter CIPP (10-20 feet)	Linear Foot	8,979		\$ -
02535-4.01.A-2.1	10" Diameter CIPP (0-10 feet)	Linear Foot	2,334		\$ -
02535-4.01.A-2.2	10" Diameter CIPP (10-20 feet)	Linear Foot	1,506		\$ -
02535-4.01.A-3.1	12" Diameter CIPP (0-10 feet)	Linear Foot	1,371		\$ -
02535-4.01.A-3.2	12" Diameter CIPP (10-20 feet)	Linear Foot	265		\$ -
02535-4.01.A-4.1	15" Diameter CIPP (0-10 feet)	Linear Foot	186		\$ -
02535-4.01.A-4.2	15" Diameter CIPP (10-20 feet)	Linear Foot	82		\$ -
02535-4.01.A-5.2	18" Diameter CIPP (10-20 feet)	Linear Foot	393		\$ -
02535-4.01.A-6.1	21" Diameter CIPP (0-10 feet)	Linear Foot	95		\$ -
02535-4.01.A-6.2	12" Diameter Double Barrel Siphon CIPP (0-10 feet)	Linear Foot	86		\$ -
02535-4.01.B-1	Bypass Pumping (12" Diameter)	Each	6		\$ -
02535-4.01.B-2	Bypass Pumping (15" Diameter)	Each	2		\$ -
02535-4.01.B-3	Bypass Pumping (18" Diameter)	Each	1		\$ -
02535-4.01.B-4	Bypass Pumping (21" Diameter)	Each	4		\$ -
02535-4.01.C	Lateral Reinstatement	Each	827		\$ -
02535-4.01.D	Locate and Expose Mainline Terminus	Each	10		\$ -
02535-4.01.E	Traffic Control for CIPP	Crew Day	120		\$ -
Mainline Point Repair					
02540-4.01.A-1.1	Sewer Point Repair, 6" Through 10" Pipe (<10' Deep)	Each	154		\$ -
02540-4.01.A-1.2	Each Additional Linear Foot Beyond the 10 Feet Minimum For Sewer Point Repair, 6" Through 10" Pipe (<10' Deep)	Linear Foot	105		\$ -
02540-4.01.A-2.1	Sewer Point Repair, 6" Through 10" Pipe (10.1'-15' Deep)	Each	50		\$ -
02540-4.01.A-2.2	Each Additional Linear Foot Beyond the 10 Feet Minimum For Sewer Point Repair, 6" Through 10" Pipe (10.1'-15' Deep)	Linear Foot	55		\$ -
02540-4.01.A-3.1	Sewer Point Repair, 6" Through 10" Pipe (15.1'-20' Deep)	Each	7		\$ -
02540-4.01.A-3.2	Each Additional Linear Foot Beyond the 10 Feet Minimum For Sewer Point Repair, 6" Through 10" Pipe (15.1'-20' Deep)	Linear Foot	10		\$ -
02540-4.01.A-4.1	Sewer Point Repair, 12" Through 18" Pipe (10.1'-15' Deep)	Each	1		\$ -
02540-4.01.A-4.2	Each Additional Linear Foot Beyond the 10 Feet Minimum For Sewer Point Repair, 12" Through 18" Pipe (10.1'-15' Deep)	Linear Foot	10		\$ -
02540-4.01.A-5.1	Sewer Point Repair, 12" Through 18" Pipe (15.1'-20' Deep)	Each	1		\$ -

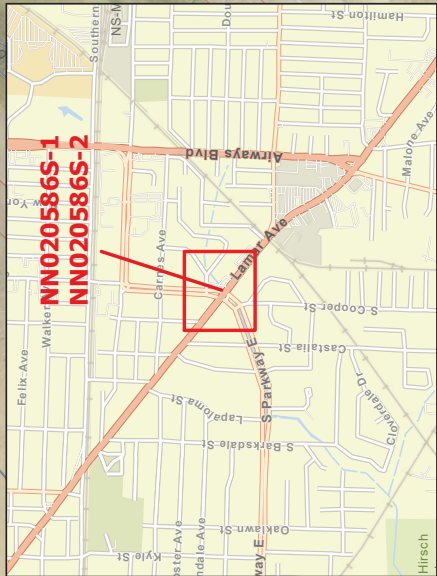
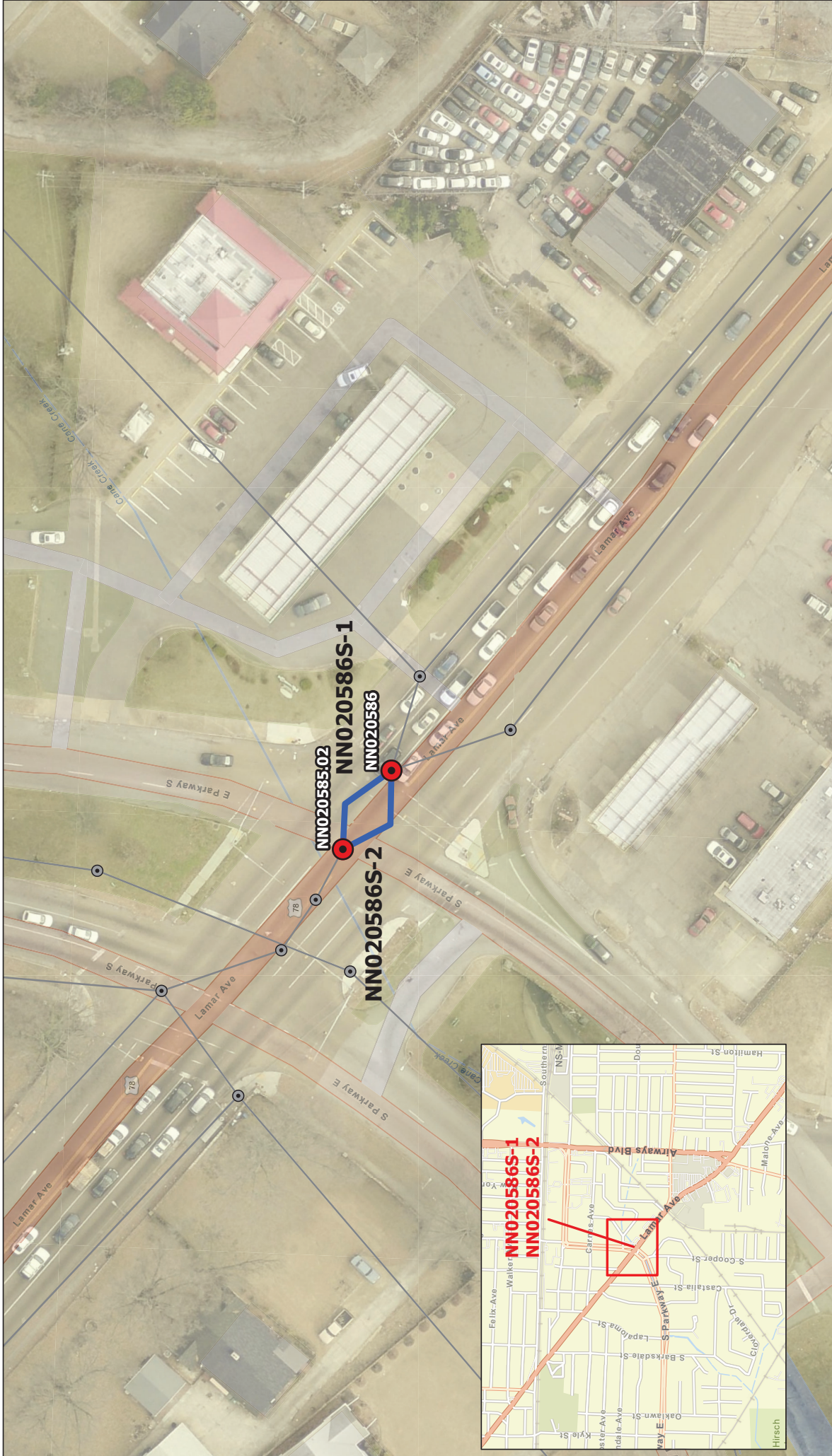
Item Number	Item Description	Unit of Measure	Estimated Quantity	Unit Price	Extension Price
02540-4.01.A-5.2	Each Additional Linear Foot Beyond the 10 Feet Minimum For Sewer Point Repair, 12" Through 18" Pipe (15.1'-20' Deep)	Linear Foot	10		\$ -
02540-4.01.B	Each Service Connection and Associated Lateral Pipe Included In a Sewer Point Repair, All Depths, All Diameters	Each	36		\$ -
02540-4.01.C	Traffic Control per Point Repair	Crew Day	213		\$ -
02540-4.01.D	Pavement Backfill for Point Repair	Cubic Yard	3,760		\$ -
02540-4.01.E	Hydroexcavation/Hand Digging	Each	213		\$ -
Post-Rehabilitation PACP Inspection					
02541-4.01.A	Post Rehab CCTV Inspection For All Diameters (<24")	Linear Foot	65,900		\$ -
02541-4.01.B	Heavy Cleaning All Diameters	Linear Foot	3,000		\$ -
Post-Rehabilitation MACP Inspection					
02544-4.01.A	GPS Coordinates of Manhole Cover	Each	165		\$ -
02544-4.01.C-1	Post Rehab MACP Level 2 Manhole Inspections	Each	165		\$ -
Site Preparation and Restoration					
02630-4.01.A	Removal and Replacement of Vegetated/Turfed Areas	Square Yard	25		\$ -
Pavement and Incidentals					
02920-5.01	Seeding (with Mulch)	per 1000 Sq Ft	25		\$ -
02921-5.01	Sodding	Square Yard	200		\$ -
02950-4.01.A-1	Asphaltic Concrete Pavement Removal and Replacement	Square Yard	2,325		\$ -
02950-4.01.A-2	Concrete Pavement Removal and Replacement	Square Yard	61		\$ -
02950-4.01.B	Concrete Sidewalk Removal and Replacement	Square Yard	1,000		\$ -
02950-4.01.C	Concrete Curb and Gutter Removal and Replacement	Linear Foot	320		\$ -
02950-4.01.D	Gravel Driveway and Gravel Area Removal and Replacement With Crushed Stone	Ton	2		\$ -
Miscellaneous					
	SRF Signage	Each	2		\$ -
71.0390 Phase 1 Sewer Rehab Group 2 CIPP - Total Estimated Unit Price Value					\$ -



**Request for Bid
Phase 1 Sewer Rehab Group 2 CIPP Addendum No. 3 to
RFB No. 197640.71.0390
November 23, 2021**



**Section 2
Updates to Technical Specifications**



- Gravity Mains (To be CIPP'ed)
- Access Manholes
- Gravity Mains
- Manholes

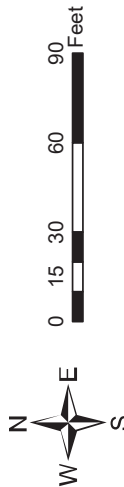


Exhibit B





Exhibit A



- Access Manholes
- Gravity Mains (To be CIPP'ed)